



Radioactivity in the Marine Environment 2007

Results from the Norwegian Marine Monitoring Programme (RAME)

Reference:

NRPA. Radioactivity in the Marine Environment 2007. Results from the Norwegian National Monitoring Programme (RAME). StrålevernRapport 2009:15. Østerås: Norwegian Radiation Protection Authority, 2009.

Authors:

Gäfvert T¹, Haldal H E², Brungot A L¹, Gwynn J¹, Sværen I², Strømsnes H², Kolstad A K¹, Møller B¹, Strålberg E³, Christensen G C³, Drefvelin J¹, Dowdall M¹, Lind B¹, Rudjord A L¹

¹Norwegian Radiation Protection Authority, ²Institute of Marine Research, ³Institute of Energy Technology

Key words:

Radioactivity, marine environment, RAME, monitoring, Norway

Abstract:

This report presents results of monitoring of radioactivity in seawater and biota collected along the Norwegian coast, the North Sea and the Skagerrak in 2007. An overview of discharges from Norwegian sources and data concerning the long-range transport of radionuclides from European nuclear facilities is included.

Referanse:

Statens strålevern. Radioaktivitet i det marine miljø 2007. Resultater fra det nasjonale overvåkningsprogrammet (RAME). StrålevernRapport 2009:15. Østerås: Statens strålevern, 2009. Språk: engelsk.

Forfattere:

Gäfvert T¹, Haldal H E², Brungot A L¹, Gwynn J¹, Sværen I², Strømsnes H², Kolstad A K¹, Møller B¹, Strålberg E³, Christensen G C³, Drefvelin J¹, Dowdall M¹, Lind B¹, Rudjord A L¹

¹Statens strålevern, ²Havforskningsinstituttet, ³Institutt for energiteknikk

Emneord:

Radioaktivitet, marin miljø, RAME, overvåking, Norge

Resymé:

Rapporten inneholder resultater fra overvåkingen av radioaktivitet i sjøvann og biota i 2007 langs norskekysten og i Nordsjøen og Skagerrak. En oversikt over utslipp fra norske kilder og utslippsdata fra europeiske nukleære anlegg som er relevante for langtransport av radioaktivitet til norske havområder er inkludert i rapporten.

Head of project: Torbjörn Gäfvert

Approved:



Per Strand, director, Department for Emergency Preparedness and Environmental Radioactivity.

44 pages.

Utgitt 2009-30-12.

Opplag 150 (09-12).

Form, omslag: LoboMedia AS.

Trykk: LoboMedia AS, Oslo..

Bestilles fra:

Statens strålevern, postboks 55, 1332 Østerås

Telefon +47 67 16 25 00, faks + 47 67 14 74 07.

E-post: nrpa@nrpa.no

www.nrpa.no

ISSN 0804-4910

Radioactivity in the Marine Environment 2007

Results from the Norwegian Marine Monitoring Programme (RAME)

Statens strålevern

Norwegian Radiation
Protection Authority
Østerås, 2009

Contents

1	Introduction	6
2	Sources of radionuclides in the marine environment	7
2.1	Discharges of anthropogenic radionuclides from Norwegian sources	7
2.1.1	<i>IFE Kjeller and GE Healthcare</i>	7
2.1.2	<i>IFE Halden</i>	8
2.2	Unsealed radioactive substances in the medical sector	9
2.3	Discharge of produced water containing ^{226}Ra and ^{228}Ra	9
2.4	Long-range transport of radionuclides	11
2.4.1	<i>Discharge of radionuclides from European nuclear installations</i>	11
2.4.2	<i>Global fallout from nuclear weapons testing</i>	13
2.4.3	<i>Outflow of Chernobyl-contaminated water from the Baltic Sea</i>	13
2.5	Other present and potential sources of radioactivity in the northern marine environment	13
3	Collection of samples	15
3.1	Seawater	16
3.2	Sediment	17
3.3	Seaweed	17
3.4	Fish, crustaceans and molluscs	17
4	Radioactivity in seawater and sediments	18
4.1	Technetium-99 in seawater	18
4.2	Strontium-90 in seawater	20
4.3	Caesium-137 in seawater and sediment	21
4.4	Plutonium-239+240 in seawater	23
4.5	Americium-241 in seawater	23
5	Radioactivity in biota	24
5.1	Technetium-99 in seaweed	24
5.2	Plutonium-239+240 in seaweed	26
5.3	Caesium-137 in seaweed	27
5.4	Caesium-137 and polonium-210 in fish and crustaceans	28
5.5	Technetium-99 in lobster	32
6	Summary and conclusions	33
6.1	Sources	33
6.2	Radioactivity in seawater and sediment	33
6.2.1	<i>Caesium-137 in seawater and sediment</i>	33
6.2.2	<i>Technetium-99 in seawater</i>	33
6.2.3	<i>Strontium-90 in seawater</i>	33
6.2.4	<i>Plutonium-239+240 and americium-241 in seawater</i>	34

6.3	Radioactivity in biota	34
6.3.1	<i>Technetium-99 in seaweed</i>	34
6.3.2	<i>Caesium-137 in seaweed</i>	34
6.3.3	<i>Caesium-137 in fish</i>	34
6.3.4	<i>Technetium-99 in crustaceans</i>	34
7	References	35
	Appendix	39
	Analytical methods	39
	The Norwegian Radiation Protection Authority (NRPA)	39
	<i>Determination of ⁹⁹Tc activity</i>	39
	<i>Detection of gamma emitters</i>	40
	The Institute of Marine Research (IMR)	40
	<i>Detection of gamma emitters</i>	40
	<i>Determination of ⁹⁹Tc</i>	40
	Institute for Energy Technology (IFE)	40
	<i>Determination of ⁹⁹Tc</i>	40
	<i>Determination of ⁹⁰Sr</i>	40
	<i>Detection of gamma emitters</i>	41
	<i>Determination of ²³⁹⁺²⁴⁰Pu</i>	41

1 Introduction

The issue of present and potential radioactive contamination in the marine environment has received considerable attention in Norway in recent years. In the late 1980s several accidents and incidents involving nuclear-powered submarines, demonstrated that the risk of the release of radionuclides into the Barents Sea should be considered more carefully. In particular, it became evident that better documentation concerning the radioactivity levels in fish and other seafood was important for the seafood export industries. Furthermore, in the early 1990s, information concerning the dumping of nuclear waste emerged through bilateral environmental cooperation between Norway and Russia. In the years that followed, concern grew regarding the safety of military and civil nuclear installations in the northwest of Russia. This concern was associated not only with possible reactor accidents, but also with the prolonged or sudden release of radionuclides from radioactive waste facilities.

In addition to the potential threats outlined above, radionuclides originating from nuclear weapons fallout, the Chernobyl accident and waste discharged from European reprocessing facilities have been detected in the Norwegian marine environment. In 1994 and 1995, the discharge of ^{99}Tc from the reprocessing facility at Sellafield in the UK increased sharply, and although this discharge has been reduced, it continued at a high level up to 2003. The discharge of ^{99}Tc was substantially reduced in 2004, but it takes 3-4 years before this is observable in Norwegian waters. There has been much public concern about the consequences of such kinds of release, as the radionuclides discharged to the Irish Sea are transported by ocean currents via the North Sea into the Norwegian coastal current and to the Barents Sea. In response to this concern, programmes for the monitoring of radioactivity in the marine environment have been established. Due to the economic importance of the fishing industry and its vulnerability to contamination, as well as any rumours of radioactive contamination, one of the main objectives of these programmes is to document levels and trends of radionuclides in the Norwegian marine environment.

Other industrial activities, such as mining and oil production, may change the distribution of naturally occurring radionuclides in the environment. The discharge of radium from water produced by oil installations is one area that has recently received special attention.

The marine monitoring programme (RAME) is funded by the Ministry of the Environment and focus on monitoring of radioactivity both in coastal areas and in the open sea. The marine monitoring programme also includes the compilation of discharge data from Norwegian sources, in addition to the collection of discharge data relevant for the long-range transport of radionuclides from various sources. Liquid discharge data for 2007 from nuclear installations and recent trends in such discharges are summarised in Chapter 2.

During 2007, samples for monitoring radioactivity in the marine environment were collected mainly in the North Sea and at permanent coastal stations along the Norwegian coastline. Results from the analysis of these samples are presented in Chapters 4 and 5. In Chapter 6, a summary of the findings and the conclusions is given. In the Appendix, technical information regarding sample preparation techniques and analytical methods employed in the laboratories are presented.

2 Sources of radionuclides in the marine environment

This chapter provides updated information and an overview of radionuclide discharges and other sources that are relevant to the Norwegian marine environment. The collection and updating of this information is an integral part of the marine monitoring programme RAME (Radioactivity in the Marine Environment), the main purpose of which is to present recent trends in radionuclide discharges and other sources of radioactivity in the marine environment. Information on discharges from Norwegian sources and on long-range transport of radionuclides from various distant sources is included. Anthropogenic radionuclides are discharged from the nuclear facilities of the Institute for Energy Technology, IFE Kjeller and IFE Halden. Discharges from these facilities are authorised by the NRPA. Unsealed radioactive materials used in medicine and science will primarily be released to the marine environment via sewage treatment plants. The utilisation of such unsealed sources is regulated through guidelines issued by the NRPA.

In recent years, increased attention has been devoted to releases containing elevated levels of naturally occurring radionuclides. Such releases may occur in connection with offshore oil production and, probably, leaching of mine tailings.

The discharge of radionuclides from Norwegian sources is only detectable in the local environment, near the discharge point. The long-range transport of radionuclides originating from fallout from atmospheric nuclear weapons tests (conducted mainly in the 1950s and 1960s), the Chernobyl accident in 1986 and from reprocessing of nuclear fuel are still the main contributors to the general levels of anthropogenic radionuclides found in Norwegian waters.

2.1 Discharges of anthropogenic radionuclides from Norwegian sources

2.1.1 IFE Kjeller and GE Healthcare

IFE Kjeller is located about 20 km east of Oslo. The facilities include a heavy-water-cooled and moderated research reactor with a thermal effect of 2 MW, called JEEP II, a metallurgical laboratory, production facilities for medical radioactive isotopes, and a radioactive waste treatment plant for low-level and intermediate-level waste (LLW and ILW). The liquid LLW originates from these facilities. Liquid effluent is discharged through a designated pipeline to the River Nitelva about 100 km from the sea. The river empties into Lake Øyeren where the water is mixed with the water from the Glomma River. The River Glomma empties into the Oslofjord at the city of Fredrikstad.

A plant manufacturing radiopharmaceutical products, managed by the private company GE Healthcare (former Amersham Health), operates in close collaboration with IFE Kjeller. Authorisation for IFE Kjeller discharges also includes the discharge from this production facility.

Table 2.1. Liquid discharges (MBq) from IFE Kjeller (IFE 2008a; IFE 2007a; IFE 2006a; IFE, 2005a; IFE, 2004a), 2003-2007 (including GE Healthcare).

Nuclide	2003	2004	2005	2006	2007
²⁴¹ Am	0.005	0.003	0.03	0.006	0.007
¹²⁴ Sb	<0.2	<0.1	<0.1	<0.3	<0.2
¹²⁵ Sb	2.7	0.075	<0.7	0.7	<0.7
¹⁴⁴ Ce	3.3	1.1	0.054	2.7	<1.3
¹³⁴ Cs	1.2	0.35	0.08	5.3	0.5
¹³⁷ Cs	22	7.9	0.51	53.6	9.5
³ H	2.8·10 ⁶	2.9·10 ⁵	4.1·10 ⁵	1.43·10 ⁶	4.99·10 ⁵
⁵⁹ Fe	<0.2	<0.3	<0.2	<0.5	<0.3
¹²⁵ I	540	327	50	42.8	44.1
¹³¹ I	15	27	39	4.2	2.0
⁵⁸ Co	0.26	<0.1	<0.1	<0.3	<0.2
⁶⁰ Co	55	24	6.7	74	71.7
⁵¹ Cr	<0.6	<2	<1.3	<0.9	<0.5
⁵⁴ Mn	<0.2	<0.2	<0.2	<0.4	<0.3
⁹⁵ Nb	0.42	<0.06	<0.1	0.04	<0.1
²³⁸ Pu	0.002	0.01	0.007	0.003	0.002
²³⁹⁺²⁴⁰ Pu	0.034	0.15	0.15	0.04	0.07
¹⁰³ Ru	0.14	0.10	<0.3	0.02	<0.1
¹⁰⁶ Ru	2.0	<4	<2.2	<2.6	<2.0
⁹⁰ Sr	0.33	2.6	0.34	1.2	0.50
^{110m} Ag	2.1	0.089	1.2	0.4	0.05
⁶⁵ Zn	0.27	0.1	8.4	<0.9	<0.7
⁹⁵ Zr	0.14	<0.2	<0.2	<0.5	<0.2
²² Na	-	-	-	-	0.56

The discharge limit authorised by the NRPA is based on the annual dose to any member of a critical group of the population along the River Nitelva, and shall not exceed 1 µSv. Each year, IFE Kjeller reports discharge data, the results of their environmental monitoring programme and calculations of effective doses resulting from discharges to NRPA. The reported discharges for the period 2003-2007 are summarised in Table 2.1.

Table 2.2. Effective doses (µSv) to any member of the critical group from river water exposure pathways as reported by IFE Kjeller (IFE 2008a; IFE 2007a; IFE 2006a; IFE, 2005a; IFE 2004a).

2003	2004	2005	2006	2007
0.17	0.07	0.02	0.48	0.09

Effective doses have been calculated by IFE for an individual in the hypothetical critical group exposed through the annual consumption of 20 kg of fish from the river and 100 hours per year presence on the riverbanks. In 2007, the calculated effective dose to this critical group was 0.09 µSv,

corresponding to 9 % of the annual dose limit of 1 µSv. The effective dose to the critical group varies, as can be seen in Table 2.2, corresponding to between 2 and 48 % of the dose limit, with an average of 17 % for the period 2003-2007.

2.1.2 IFE Halden

The Halden Boiling Water Reactor (HBWR) is located in the town of Halden, in the southeast of Norway, close to the Swedish border. The HBWR is heavy-water-cooled and moderated with a thermal effect of 20 MW. The reactor was commissioned in 1959.

IFE Halden is authorised to discharge a limited amount of radioactivity from the research reactor to the River Tista (which empties into the Iddefjord). The discharge limit for liquid waste to the marine environment is based on a dose limit of 1 µSv per year to a hypothetical critical group, and the actual annual discharge is typically 1.5-3 % of the authorised limit. Liquid discharges in the period 2003-2007, and the corresponding doses to the critical group are presented in Tables 2.3 and 2.4.

Table 2.3. Liquid discharge (MBq) from IFE Halden, 2003 - 2007 (IFE 2008b; IFE 2007b; IFE 2006b; IFE, 2005b; IFE, 2004b).

Nuclide	2003	2004	2005	2006	2007
¹²⁴ Sb	-	-	0.003	-	0.0093
¹²⁵ Sb	0.06	0.002	0.037	0.0064	0.023
¹⁴¹ Ce	0.29	0.68	0.61	0.25	1.5
¹⁴⁴ Ce	3.2	16	8.8	3.0	17
¹³⁴ Cs	8.8	8.0	18	25	29
¹³⁷ Cs	130	70	130	190	240
³ H	2.7·10 ⁵	5.4·10 ⁵	5.3·10 ⁵	3.0·10 ⁵	9.8·10 ⁶
⁵⁹ Fe	-	0.75	0.88	-	0.55
¹³¹ I	3.6	0.68	0.42	21	1.8
¹⁰⁹ Cd	0.016	-	-	-	0.13
⁵⁸ Co	3.3	8.7	41	4.0	3.6
⁶⁰ Co	62	68	99	86	49
⁵¹ Cr	130	210	180	240	25
⁵⁴ Mn	0.18	0.73	2.5	1.1	0.45
⁵⁶ Mn	-	2.8	-	-	-
⁹⁵ Nb	8.5	11	12	8.3	12
¹⁰³ Ru	0.17	0.45	0.42	0.16	0.86
¹⁰⁶ Ru	-	-	-	-	2.6
⁹⁰ Sr	3.3	2.1	4.9	4.4	6.8
^{110m} Ag	0.17	0.001	0.94	0.21	3.2
⁹⁵ Zr	3.3	4.9	5.3	3.8	4.8

The calculation of the effective dose to the critical group is based on the following assumptions:

- An annual consumption of 30 kg of fish from the Iddefjord,
- 200 hours per year exposure on the shore of the fjord,
- 50 hours per year bathing in the fjord, and
- 1000 hours per year boating on the fjord.

Table 2.4. Effective doses (μSv) to the critical group from marine exposure pathways as reported by IFE Halden, 2003 - 2007 (IFE 2008b; IFE 2007b; IFE 2006b; IFE, 2005b; IFE, 2004b).

2003	2004	2005	2006	2007
0.014	0.016	0.025	0.02	0.017

2.2 Unsealed radioactive substances in the medical sector

Unsealed radioactive substances are used in hospitals, research laboratories and various industrial activities. According to regulations from 1981, laboratories etc. handling unsealed radioactive substances must be authorised by the NRPA. With this authorisation, laboratories and hospitals are allowed to discharge activity into the sewage system according to predefined limits. On January 1, 2004, new regulations came into force, describing requirements for handling and discharge of unsealed radioactive sources. At the moment all discharges require authorisation.

Unsealed radioactive substances used in medicine dominate the anthropogenic radioactive discharges to the sewage system. Radioactive solutions are given to patients for diagnostic and therapeutic purposes, and enter the sewage systems mainly by the excretion of urine and faeces. The two most used radionuclides in nuclear medicine for diagnostic and therapeutic purposes are $^{99\text{m}}\text{Tc}$ (which decays to ^{99}Tc with a half-life of 6 h) and ^{131}I ($T_{1/2} = 8.04$ d). The discharge of these radionuclides has been estimated according

instructions published by OSPAR. The percentage of the administered doses that is discharged as liquid waste is:

^{131}I Ablation therapy

100% of the administered dose.

^{131}I Thyrotoxicosis treatment

for in-patients, 50% of the administered dose; for out-patients, 30% of the administered dose; for patients who cannot be classified as in-patients or out-patients, 50% of the administered dose.

$^{99\text{m}}\text{Tc}/^{99}\text{Tc}$

100% of the amount of $^{99\text{m}}\text{Tc}$ administered has decayed to ^{99}Tc and that it is all discharged.

Under these assumptions the total discharged activity of ^{131}I and ^{99}Tc in 2007 from the medical sector was 1116 GBq and 0.06 MBq, respectively.

2.3 Discharge of produced water containing ^{226}Ra and ^{228}Ra

Large volumes of produced water, containing dissolved ^{226}Ra and ^{228}Ra , are discharged into the sea during oil exploitation. Produced water may be formation water trapped in the reservoirs for millions of years or a mixture of formation water and seawater, when seawater has been injected in order to maintain pressure in the reservoirs during oil and gas production. Although the levels of ^{226}Ra and ^{228}Ra are not technologically enhanced, the natural concentrations of these isotopes in the saline formation water are generally much higher (about 3 orders of magnitude) than the background concentration in seawater (a few mBq per litre).

The concentration of radium in the produced water may change over the lifetime of the well. Injection of large volumes of seawater, to maintain the pressure within the well, may lead to dilution of the radium in the produced water, but at the cost of greater water-to-oil ratios later in the production process.

In 2007 162 10⁶ m³ of produced water was discharged to the marine environment from the Norwegian oil and gas industry, while 27 10⁶ m³ was reinjected in the reservoirs. The total activity of ²²⁶Ra and ²²⁸Ra discharged was about 530 GBq and 400 GBq, respectively. (OLF, 2008). In Fig. 2.1 the activity of ²²⁶Ra and ²²⁸Ra discharged from Norwegian oil fields are presented. About 40 % of the total discharged activity of ²²⁶Ra and ²²⁸Ra was discharged from the Troll B and C platforms.



Photo: NRPA

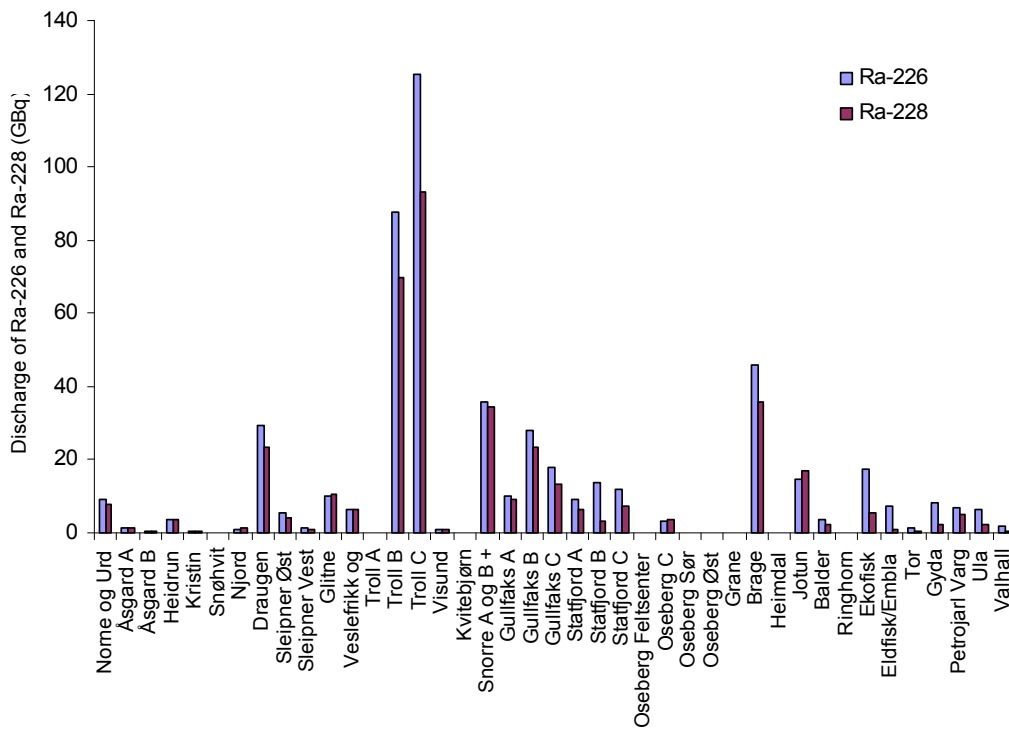


Figure 2.1. Estimated discharged activity of ²²⁶Ra and ²²⁸Ra from Norwegian oil and gas fields in 2007 (data from OLF, 2008).

2.4 Long-range transport of radionuclides

There are several real and potential sources of radioactive contamination of the northeast Atlantic and the Arctic marine environment, as shown in Figure 2.2.



Figure 2.2. Sources of radionuclides in the northern marine environment: Chernobyl in the Ukraine, the reprocessing plants at Sellafield, Cap de la Hague and Dounreay, the dumping sites for nuclear waste in the Kara Sea, the sites of the sunken submarines Komsomolets and K-159 and Russian nuclear installations (Mayak, Tomsk and Krasnoyarsk) releasing radionuclides to the Russian rivers Ob and Yenisey.

The primary sources are fallout from atmospheric nuclear weapons testing during the 1950s and 1960s, discharged radionuclides from reprocessing plants and fallout from the Chernobyl accident.

Radioactive contaminants discharged into northern European marine waters can reach Norwegian waters by ocean current transportation. The main ocean currents of the area are presented in Figure 2.3. Some elements, such as Pu and Am, are particle-reactive and will to a large extent sink and end up in the sediments. From the sediments the radionuclides can later be remobilised and transported away by local currents. Remobilised plutonium and ^{137}Cs from Irish Sea sediments contaminated by previous Sellafield discharges are one of the main sources of these elements in Norwegian marine

waters. Other elements, such as ^{99}Tc and ^{90}Sr , are not particle-reactive and will follow currents and can be transported large distances away from the discharge point.

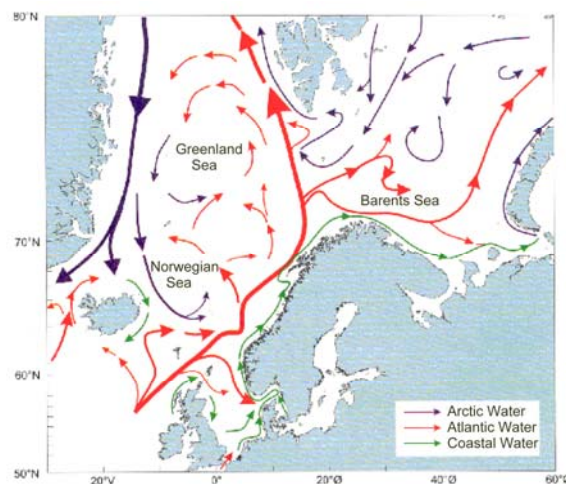


Figure 2.3. Overview of the main current system in the North Sea, Norwegian Sea, Greenland Sea and Barents Sea (Source: IMR).

2.4.1 Discharge of radionuclides from European nuclear installations

Spent nuclear fuel can be managed in different ways. In a few countries, for instance in France and the UK, spent nuclear fuel is reprocessed. The major part of the waste from these facilities, such as fission products, is stored pending final management and disposal, but a small part is discharged as liquid waste to the marine environment. Discharge limits are set by the relevant national authority.

Sellafield (formerly Windscale) is located on the west coast of Cumbria in the UK. Further information about this reprocessing plant can be found in Amundsen *et al.*, (2003). The other reprocessing plant in Europe affecting Norwegian marine waters is located at Cap de la Hague in France. Except for tritium (^3H), the discharge of liquid radioactive waste has generally been lower here than from Sellafield. In 1994 and 1995, the discharge of ^{99}Tc from the reprocessing facility at Sellafield in the UK increased sharply, and although this discharge has been reduced, it was continued at a high level up to 2003. The discharge of ^{99}Tc has been substantially reduced since 2004, when a new chemical treatment process that removes ^{99}Tc was implemented.

Springfields is located on the west coast of the United Kingdom, and liquid waste is discharged to the Ribble estuary. This facility is mainly involved in the manufacture of fuel elements for nuclear reactors and the production of uranium hexafluoride. The Dounreay facilities on the northern coast of Scotland were established in 1955, and have mainly been used in the development of technology for fast breeder reactors. Liquid discharge of radioactive waste from Cap de la Hague, Sellafield, Springfields and Dounreay in 2007 is presented in Table 2.5.

In addition to the direct discharges from re-processing, the remobilisation of ^{137}Cs and plutonium from contaminated sediments in the Irish Sea acts as a secondary source of radionuclides in the marine environment. Substantial discharges of ^{238}Pu , $^{239+240}\text{Pu}$, ^{241}Am and ^{137}Cs and other radionuclides in the 1970s and early 1980s resulted in widespread contamination of Irish Sea sediments. It has been shown that these radionuclides can be redissolved and transported out of the Irish Sea. An annual loss of 1.2 TBq $^{239+240}\text{Pu}$ and 86 TBq ^{137}Cs from the Irish Sea has been estimated by Cook *et al.*, (1997), while Leonard *et al.*, (1999) estimated annual losses of plutonium based on remobilisation from surface sediments to be 0.6 TBq. The half-lives of plutonium and americium in Irish Sea sediments were estimated to be 58 years and ~1000 years, respectively. This implies that remobilisation of radionuclides from Irish Sea sediments is a significant source of anthropogenic radionuclides in the North Sea and Norwegian coastal areas, and will remain so for a long time.

Table 2.5. Liquid discharge of radionuclides (TBq) from Sellafield, Cap de la Hague, Springfields and Dounreay to the marine environment in 2007 (OSPAR, 2009).

Nuclide	Cap de la Hague	Sellafield	Springfields	Dounreay
^3H	$1.2 \cdot 10^4$	628	-	$1.18 \cdot 10^{-1}$
Total- α	$2.13 \cdot 10^{-2}$	0.125	0.026	$3.12 \cdot 10^{-4}$
Total- β	4.81	24.8	2.99	$2.95 \cdot 10^{-3}$
^{14}C	7.08	4.65	-	-
^{54}Mn	$1.27 \cdot 10^{-2}$	-	-	-
^{57}Co	$3.94 \cdot 10^{-4}$	-	-	-
^{58}Co	$8.06 \cdot 10^{-4}$	-	-	-
^{60}Co	0.469	0.05	-	-
^{63}Ni	$9.7 \cdot 10^{-2}$	-	-	-
^{65}Zn	ND	-	-	-
^{90}Sr	0.121	5	-	$4.57 \cdot 10^{-2}$
^{22}Na	-	-	-	$6.81 \cdot 10^{-2}$
^{99}Tc	$6.1 \cdot 10^{-2}$	4.89	0.051	-
^{106}Ru	2.23	1.49	-	-
^{125}Sb	$7.40 \cdot 10^{-2}$	-	-	-
^{129}I	1.37	0.104	-	-
^{134}Cs	$6.8 \cdot 10^{-2}$	0.137	-	-
^{137}Cs	1.01	6.98	-	$1.04 \cdot 10^{-2}$
^{144}Ce	$1.62 \cdot 10^{-3}$	0.419	-	-
^{154}Eu	$7.06 \cdot 10^{-4}$	-	-	-
^{155}Eu	$1.78 \cdot 10^{-4}$	-	-	-
$^{239+240}\text{Pu}$	$1.36 \cdot 10^{-3}$	0.105 (Pu- α)	-	-
^{241}Pu	0.124	2.83	-	-
^{241}Am	$2.77 \cdot 10^{-3}$	0.0224	-	-
^{237}Np	$1.29 \cdot 10^{-4}$	0.038	0.00169	-
^{242}Cm	$3.54 \cdot 10^{-5}$	-	-	-
$^{243+244}\text{Cm}$	$1.53 \cdot 10^{-3}$	0.00311	-	-
^{230}Th	-	-	0.0014	-
^{232}Th	-	-	$3.47 \cdot 10^{-4}$	-
U	-	-	0.018	-
U	26.5 kg	302 kg	-	-

2.4.2 Global fallout from nuclear weapons testing

From a global point of view, atmospheric nuclear weapons tests, conducted between 1945 and 1980, are the largest source of radioactive contamination in the environment. The most intensive test period was between 1952 and 1962, during which the USSR and USA were responsible for most of the tests. The last atmospheric nuclear detonation was conducted in China in 1980. In total, it has been estimated that 948 PBq ^{137}Cs , 622 PBq ^{90}Sr , 6.52 PBq ^{239}Pu and 4.35 PBq ^{240}Pu have been released to the environment (UNSCEAR, 2000a), the major part in the northern hemisphere, where most of the tests took place.

Fallout from atmospheric nuclear weapons tests can still be found in the marine environment. About 60 % of the released activity was deposited in the world's oceans. The distribution of the fallout today depends on parameters such as ocean currents, diffusion and sedimentation rates. Earlier expeditions in the Atlantic have shown that the concentration of ^{137}Cs in surface water is about a few Bq m^{-3} (about twice as much as ^{90}Sr), between 45°S and 45°N , with a slight increase to the north (Bourlat *et al.*, 1996). The activity concentration of $^{239+240}\text{Pu}$ shows the same trend, but the activity concentrations are about 1000 times lower. Reasons for this are that less plutonium was released, but also that plutonium is more particle reactive and has a higher sedimentation rate, which leads to a shorter residence time in the water.

2.4.3 Outflow of Chernobyl-contaminated water from the Baltic Sea

The worst nuclear accident in history occurred on April 26, 1986 in Chernobyl, Ukraine. In the initial explosion and the following fire, about 3-4 % of the nuclide inventory in the core was released to the atmosphere. The major part consisted of volatile radionuclides such as inert gases, iodine isotopes and ^{134}Cs and ^{137}Cs . Many of the released nuclides had short half-lives and can not be observed in the environment today. The radionuclide that will affect the environment in a long-term perspective is ^{137}Cs , with a physical half-life of

30 years. In total about 85 PBq of ^{137}Cs was released to the environment (UNSCEAR, 2000b). The Baltic Sea was the most affected marine area, where about 5 PBq was deposited (Evans, 1991). Shortly after the accident the activity concentration of ^{137}Cs was very high in part of the Baltic Sea. Due to low water exchange and a constant supply from rivers it will take a relatively long time for the levels to decrease. The average activity concentration of ^{137}Cs in the southern Baltic Sea surface water in 2007 was reported to 39 Bq m^{-3} (Zalewska and Saniewska, 2009). Due to the water exchange through the Danish Straits it has been estimated that about 40 TBq flows from the Baltic Sea into the Kattegat annually (Dahlgard, 2002). It is however clear that there is a relatively large variability in the outflow rates from the Baltic Sea (HELCOM, 2009; NRPA, 2003; NRPA, 2006; NRPA, 2007). The ^{137}Cs will subsequently be transported by the Baltic current which continues as the Norwegian coastal current. This is one of the major sources of ^{137}Cs in the Norwegian marine environment, together with remobilised ^{137}Cs from the seabed of the Irish Sea.

2.5 Other present and potential sources of radioactivity in the northern marine environment

In addition to discharges from the western European reprocessing plants, northern marine waters have also received an input of various radionuclides from Russian reprocessing plants situated on the tributaries of the Russian rivers Ob and Yenisey (see Figure 2.2). These are the Mayak Production Association in the southern Urals and the Siberian Chemical Combine (Tomsk-7) north of the town of Tomsk, and the Krasnoyarsk Mining and Chemical Combine (KMCC). Uncertainty exists regarding the magnitude of radionuclide contributions from these sources, although estimates have been made. For example, between 1958 and 1993 routine discharges from the KMCC are estimated to have led to an input of 30-100 TBq of ^{137}Cs into the Kara Sea; a level which is of a similar order of magnitude to inputs from Sellafield-derived ^{137}Cs to the area

(Vakulovsky *et al.*, 1995). However, the fact that the prevailing surface currents tend to transport contamination away from the Kara Sea in predominantly easterly and northerly directions, suggests that the resultant inputs to the Barents Sea has been relatively low. Nonetheless, there is a potential for significant radionuclide contamination following large accidental releases of radioactivity from these nuclear complexes.

Several other sources exist which also represent potential sources of radionuclides in the Barents and Norwegian Seas. Among these are radioactive waste containers dumped in the Barents and Kara Seas by the Former Soviet Union (FSU) and the sunken submarines the Komsomolets and the K-159 in the Norwegian Sea and the Barents Sea. The dumping areas and the locations of the sunken submarines are given in Figure 2.2. Several investigations have been conducted to detect possible leakage from these sources.

As part of the bilateral environmental cooperation with the Russian Federation, a joint Russian-Norwegian expert group has been investigating the condition of the contained dumped objects and has analysed sediment and water samples at these sites.

According to Strand *et al.* (1998), elevated levels of radionuclides in sediments collected in the vicinity of the dumped objects demonstrated that leakage had occurred, but no significant inputs of radionuclides to the open sea from this source have been detected. Following an accident on April 7, 1989, the Russian nuclear submarine the Komsomolets, lies at a depth of 1700 metres, 180 km southwest of Bear Island in the Norwegian Sea. The submarine contains a nuclear reactor and two torpedoes with nuclear warheads. Kolstad (1995) reported low activity concentrations of ^{134}Cs in seawater samples collected near the submarine, showing that leakage of radiocaesium isotopes may have occurred. Samples of water and sediments collected around the submarine by the Institute of Marine Research and analysed with respect to ^{137}Cs are presented in Figure 2.4.

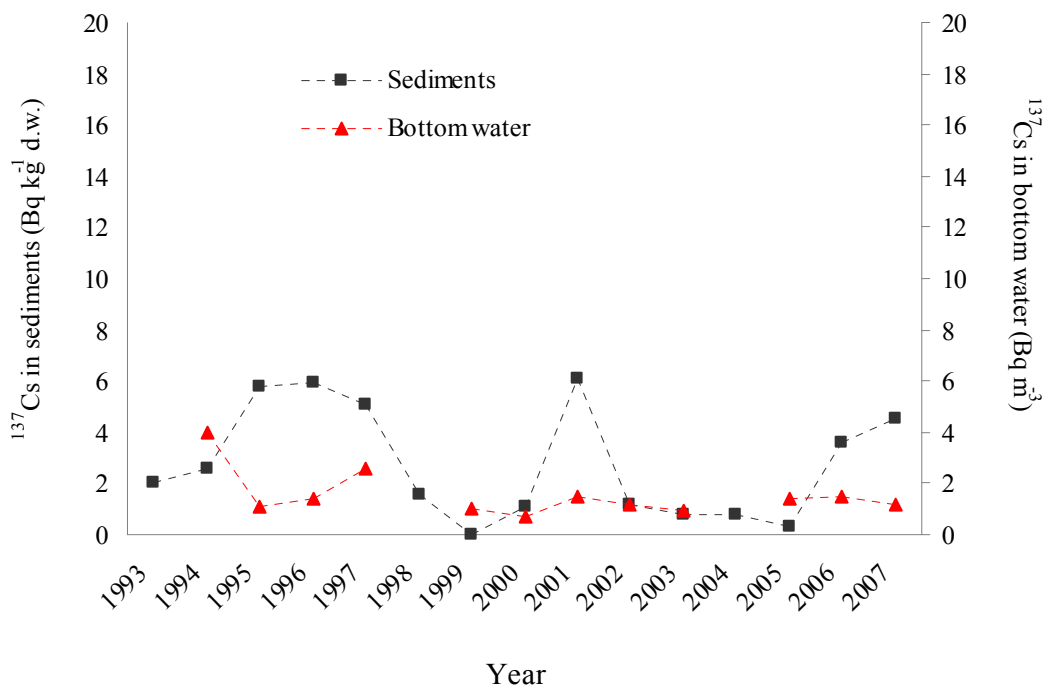


Figure 2.4. ^{137}Cs in samples from the position of the sunken nuclear submarine "Komsomolets".

3 Collection of samples

In 2007 samples were collected mainly in the North Sea, the Skagerrak, in selected fjords and at permanent coastal stations. A geographic overview of the sampling area covered by the marine monitoring programme, with the fixed coastal stations marked, is shown in Figure 3.1.

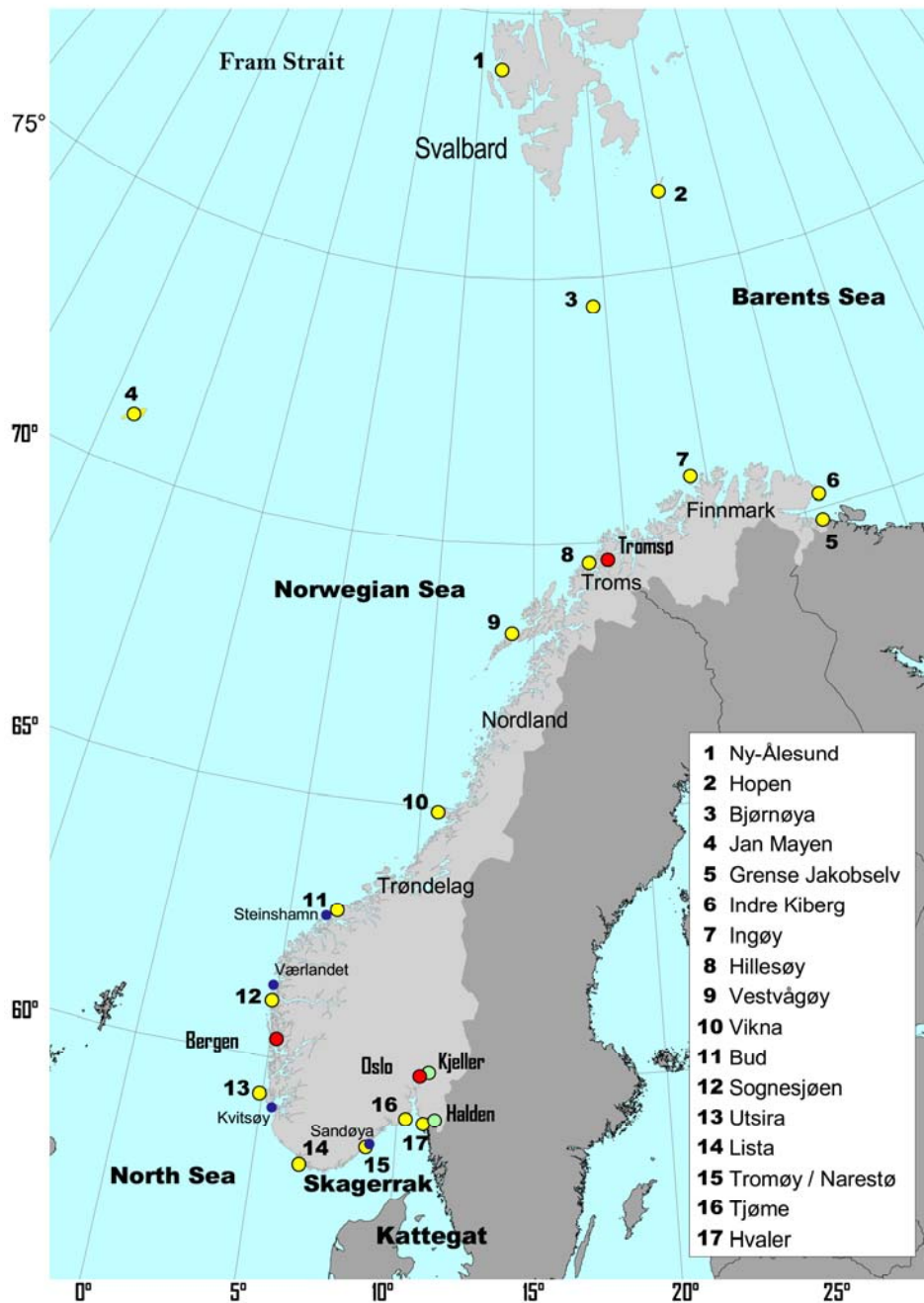


Figure 3.1. Geographic overview of the sampling area covered by the marine monitoring programmes. (Fixed coastal sampling stations are indicated by yellow dots).

Sampling and analysis were carried out by the Norwegian Radiation Protection Authority (NRPA), the Institute of Marine Research (IMR) and the Institute for Energy Technology (IFE).

Samples from the North Sea and the Skagerrak were collected in April 2007 by IMR and NRPA from the vessels R/V “Johan Hjort” (Fig. 3.2) and R/V “G.M. Dannevig”. During the expeditions samples of surface water were collected which were later analysed for ^{99}Tc , ^{137}Cs , ^{90}Sr , ^{241}Am and plutonium isotopes. Sediment was also sampled and later analysed for ^{137}Cs . A few samples were also collected in the Norwegian Sea and the Barents Sea in by IMR.



Fig. 3.2. R/V Johan Hjort (Photo: H.P. Tysnes).

3.1 Seawater

For ^{99}Tc , ^{90}Sr and 50-100 litres of unfiltered water was collected at each sampling station and later transported to various laboratories for analysis.

For the analysis of ^{137}Cs , $\text{Cu}_2[\text{Fe}(\text{CN})_6]$ -impregnated cotton filters are used as sorbents (Roos *et al.*, 1994). The system consists of a prefilter (1 micron) and two $\text{Cu}_2[\text{Fe}(\text{CN})_6]$ -impregnated cotton filters connected in series (Fig 3.3). Assuming identical collection efficiency for the $\text{Cu}_2[\text{Fe}(\text{CN})_6]$ -impregnated cotton filters, the amount of caesium passing through the prefilter can be calculated by considering the two filters as the first two terms in a geometrical series, which has the sum:

$$A(^{137}\text{Cs}) = A_1 / (1 - A_2 / A_1)$$

where A_1 and A_2 are the ^{137}Cs activities on the first and second impregnated filters, respectively.



Figure 3.3. Filter system used for analysis of ^{137}Cs in seawater. (Photo: NRPA).

Seawater samples of 200 litres (unfiltered) were collected for the determination of the activity concentrations of $^{239+240}\text{Pu}$ and ^{241}Am . To collect deep water samples a CTD/Rosette multi bottle sampler was used (Fig 3.4). Plutonium-242 and ^{243}Am were used as chemical yield determinants. The precipitation of plutonium and americium from the water was performed *in situ* according to the analytical procedure described by Chen *et al.* (1991).



Fig. 3.4. CTD/Rosette multi-bottle sampler.

3.2 Sediment

Sediment samples were retrieved from the seabed using a Smøgen box corer. Profiles were collected from the box by slowly inserting PVC tubes into the sediment sample. Surface sediment samples were obtained from the upper 2 cm layer of the sediment remaining in the box-corer.

3.3 Seaweed

NRPA collected seaweed (*Fucus vesiculosus*) samples from eight stations along the Norwegian coastline. At Hillesøy in northern Norway, seaweed is collected every month and at the other locations once per year. In addition, IFE performs monthly or annual seaweed sampling at eleven locations along the coastline, from the Russian border in the north to the Swedish border in the south.

3.4 Fish, crustaceans and molluscs

IMR collected fish samples from commercial fishing locations in the Barents Sea, the Norwegian Sea and the North Sea. Samples of cod were prepared twice a year by combining muscle samples of 5 - 50 grams from 25 - 100 individual fish.

At the request of NRPA, Labora A/S in Salten collected different samples of fish species and crustaceans from the northern part of Norway.

Samples of mussels (*Mytilus edulis*) were collected by the Norwegian Food safety Authority from eight different locations along the Norwegian coast.

Samples of lobster (*Homarus gammarus*) from Skagrerrak were delivered by a local fisherman in Arendal.

4 Radioactivity in seawater and sediments

4.1 Technetium-99 in seawater

Tc-99 has a physical half-life of $2.13 \cdot 10^5$ years, and originates from the decay of ^{99}Mo , which is formed either as a fission product from ^{235}U or ^{239}Pu or by neutron activation of ^{98}Mo . The main source of ^{99}Tc in Norwegian waters is liquid discharge from the reprocessing plant at Sellafield. In oxygenated seawater ^{99}Tc is present as the highly soluble pertechnetate ion (TcO_4^-). Due to its conservative behaviour in seawater, TcO_4^- has the ability to be transported by ocean currents without being significantly affected by sedimentation processes. From the Irish Sea, ^{99}Tc is transported by ocean currents to the North Sea and via the Norwegian Coastal Current up to the Barents Sea. The transit time (the time between a specific discharge and the maximum activity concentration from that discharge reaching the sampling location) for ^{99}Tc to reach this area (Hillesøy) from the Irish Sea has been estimated to 3-4 years (Brown *et al.*, 2002; Dahlgaard, 1995).

During 2007, seawater samples were collected in the North Sea, the Skagerrak and the Barents Sea and analysed for ^{99}Tc . The results are presented in Figure 4.1. In the North Sea and the Skagerrak the activity concentration of ^{99}Tc ranged from 0.17 to 1.5 Bq m^{-3} . The activity concentration of ^{99}Tc in the Skagerrak ranged from 0.45 to 0.58 Bq m^{-3} . Highest activity concentration was observed in samples collected off the Scottish coast.

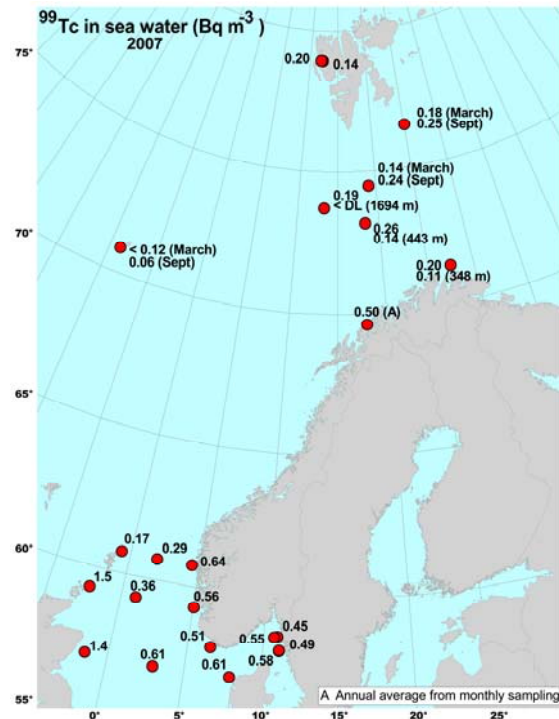


Figure 4.1. Activity concentration (Bq m^{-3}) of ^{99}Tc in seawater samples collected in the North Sea, the Skagerrak and the Barents Sea in 2007.

The activity concentrations found in the North Sea and the Skagerrak are generally lower than those observed in 2003 (NRPA, 2005). The reason for this is the reduced discharge of ^{99}Tc from Sellafield. Monthly samples have also been collected at Hillesøy (Fig. 4.2). Average activity concentration in seawater at Hillesøy in 2007 was $0.5 \pm 0.1 \text{ Bq m}^{-3}$, which is slightly lower than reported in 2006.

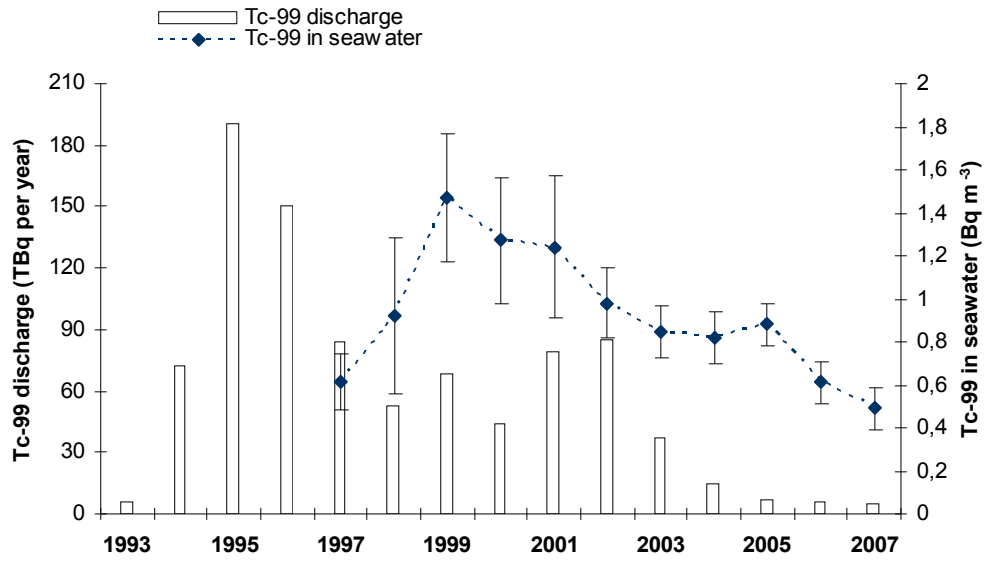


Figure 4.2. Annual average activity concentration ($Bq\ m^{-3}$) of ^{99}Tc in seawater at Hillesøy from monthly sampling and annual discharge of ^{99}Tc from Sellafield.

4.2 Strontium-90 in seawater

Strontium-90 is a fission product with a physical half-life of 29 years. Similar to ^{99}Tc , ^{90}Sr is a conservatively behaving element in the marine environment.

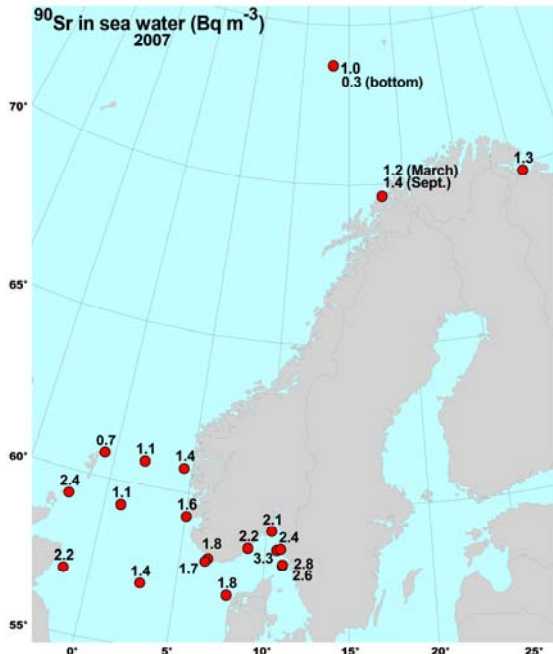


Figure 4.3. Activity concentration (Bq m^{-3}) of ^{90}Sr in surface water samples collected in the North Sea, the Skagerrak and the Barents Sea in 2007.

Seawater has been sampled mainly in the North Sea and the Skagerrak and analysed for ^{90}Sr . The main sources of ^{90}Sr in these waters are discharge of liquid waste from reprocessing plants (mainly Sellafield), fallout from atmospheric nuclear weapons tests conducted mainly in the 1950s and 1960s and outflow of water from the Baltic Sea. The annual discharge of ^{90}Sr from Sellafield between 1998 and 2007 has been in the range of 5 to 31 TBq. The results for 2007 are presented in Figure 4.3. Typical activity concentration of ^{90}Sr in seawater from the southern Baltic Sea in 2007 has been reported to be around 7 Bq m^{-3} (Zalewska and Saniewski, 2009).

In the North Sea and in the Skagerrak, the activity concentration ranged from 0.7 Bq m^{-3} to 3.3 Bq m^{-3} . The highest concentrations were found in the Skagerrak. The activity concentrations are similar to the levels observed in 2001 and 2004 in the same area (NRPA, 2006 and NRPA, 2003).

4.3 Caesium-137 in seawater and sediment

Caesium-137 is a fission product with a half-life of 30 years. The main sources of ^{137}Cs in the North Sea and the Skagerrak are fallout from atmospheric nuclear weapons tests in the 1950s and 60s, outflowing water from the Baltic Sea and ^{137}Cs remobilised from Irish Sea sediments. Runoff from land, from the areas with the highest Chernobyl fallout can also contribute locally in coastal water. Like ^{99}Tc and ^{90}Sr , ^{137}Cs is also a conservatively behaving radionuclide in seawater.

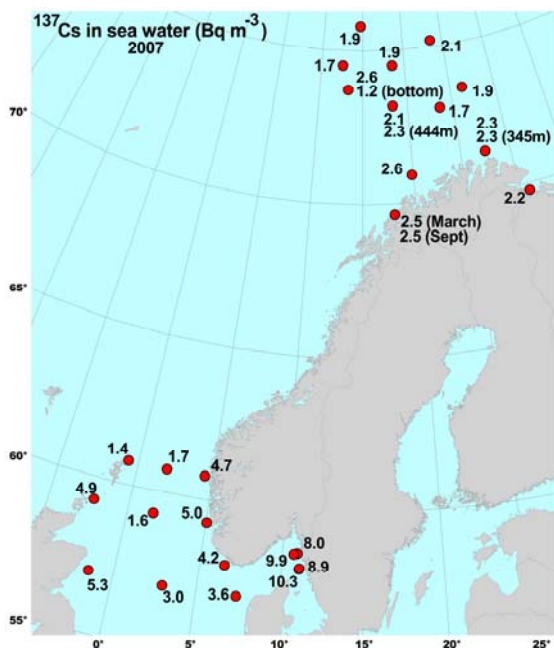


Figure 4.4. Activity concentration (Bq m^{-3}) of ^{137}Cs in seawater samples (surface water) collected in the Norwegian Sea, the Skagerrak and the Barents Sea in 2007.

Observed levels of ^{137}Cs in the North Sea, the Barents Sea and the Skagerrak in 2007 are shown in Figure 4.4.

The activity concentration in surface water sampled in the North Sea ranged from 1.4 to 5.3 Bq m^{-3} . This is similar or slightly lower to the levels observed in 2001 and 2004 in the same area. In 2004, the observed activity concentrations of ^{137}Cs in seawater from the Norwegian Coastal Current were higher due to a relatively large outflow of seawater from the Baltic Sea.

Highest activity concentrations of ^{137}Cs were found in seawater in the Skagerrak. The observed levels in 2007 are in the range from 8.0 to 10.3 Bq m^{-3} . This is similar to the activity concentrations found in 2001 and 2005, but lower than observed levels in 2004. The activity concentration of ^{137}Cs in Skagerrak and the Norwegian Coastal Current seems to be slowly decreasing. The effective half-life of ^{137}Cs in the Baltic Sea, which is the main source of ^{137}Cs in this region, has been estimated to 10 years (Ikäheimonen *et al.* 2009). This is also in agreement with data on ^{137}Cs in seawater and seaweed from Hillesøy (Fig. 4.5) and Utsira (Fig. 5.8). Due to the variability in outflow rates from the Baltic Sea and contribution from other sources (for example remobilization from Irish Sea sediments), the temporal trend in the Skagerrak and the Norwegian Coastal Current is not as evident as in the Baltic Sea.

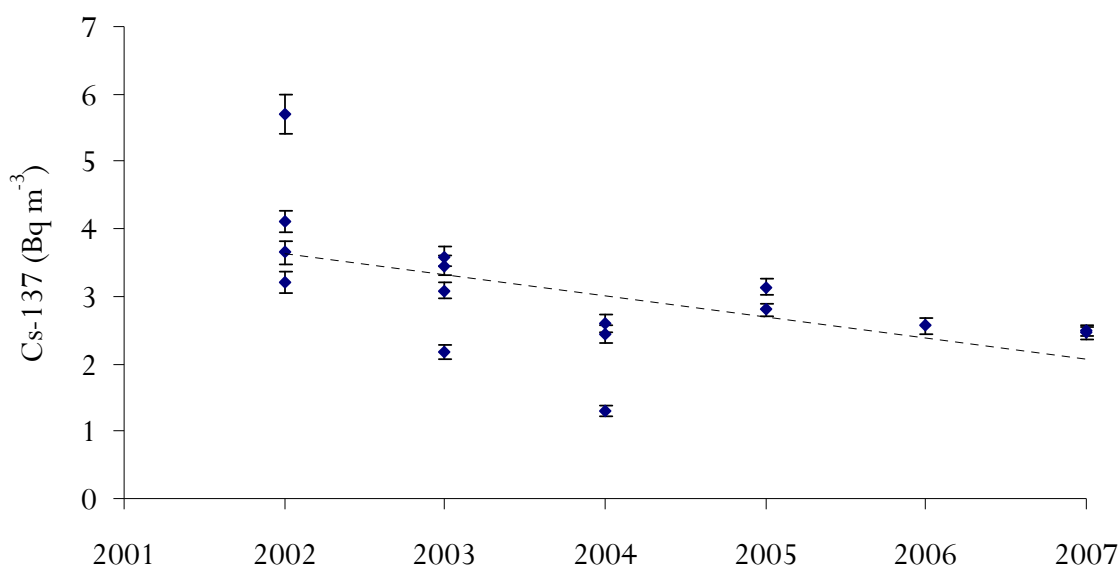


Figure 4.5. Activity concentration (Bq m^{-3}) of ^{137}Cs in seawater at Hillesøy in the period 2002-2007.

In the Barents Sea the activity concentration of ^{137}Cs ranged from 1.2 to 2.6 Bq m^{-3} . This is similar to the observed levels in 2003, 2005 and 2006 (NRPA, 2005; NRPA, 2007 and NRPA 2008).

Cs-137 has also been analysed in surface sediments (upper 2 cm layer) from the Barents Sea and selected fjords. The results are presented in Fig. 4.6 and range from < 0.8 to 14.0 Bq kg^{-1} (d.w.).

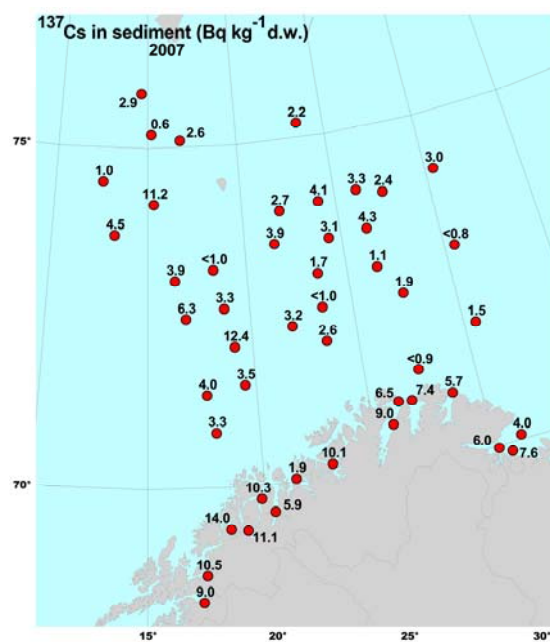


Figure 4.6. Activity concentration (Bq kg^{-1} d.w.) in surface sediment from the Barents Sea and selected fjords in 2007.

4.4 Plutonium-239+240 in seawater

Plutonium-239 ($T_{1/2} = 24\,110$ y) and ^{240}Pu ($T_{1/2} = 6\,563$ y) belong to the transuranium elements and are mainly produced by neutron capture and are mainly produced by neutron capture (with subsequent beta decay) by ^{238}U and ^{239}Pu , respectively. The behavior of plutonium in the marine environment is complex due to its different possible oxidation states. Under oxidizing conditions Pu is generally found in the more soluble +V and +IV state, while in reducing environments the more particle-reactive +III and +IV states dominate. The main sources of $^{239+240}\text{Pu}$ in northern Norwegian marine waters is global fallout from atmospheric nuclear weapons tests in the 1950s and 1960s, and remobilised plutonium from Irish Sea sediments.

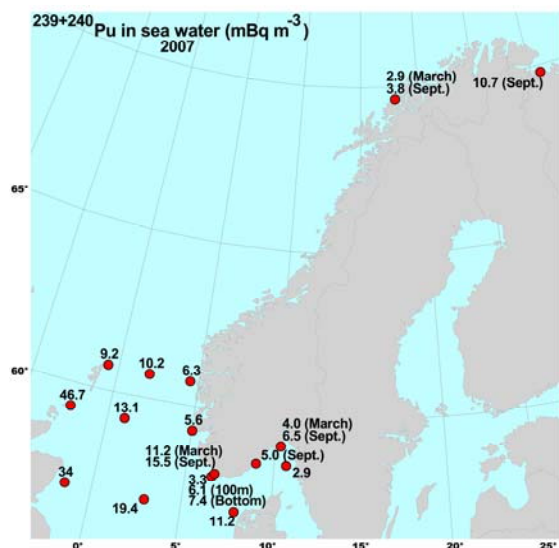


Figure 4.7. Activity concentration (mBq m^{-3}) of $^{239+240}\text{Pu}$ in surface water samples collected in the North Sea, the Skagerrak and the Barents Sea in 2007.

Observed levels in the North Sea and the Skagerrak in 2007 are presented in Fig. 4.7 and range from 2.9 to 46.7 mBq m^{-3} . The levels and geographical distribution within the North Sea of $^{239+240}\text{Pu}$ in 2007 are similar as in 2001, 2004 and 2005 (NRPA, 2003; NRPA, 2006 and NRPA 2007), where the highest activity concentrations are found in samples collected near the Scottish coast. Comparison of results received in 2001, 2004, 2005 and 2007 indicates that the input rate of $^{239+240}\text{Pu}$ to the

North Sea from the Irish Sea have been relatively constant during this period.

4.5 Americium-241 in seawater

Americium-241 belongs to the transuranium elements and has a physical half-life of 432 years. It is produced, for example, in nuclear reactors by successive neutron capture by ^{239}Pu . Am-241 is finally formed by beta-decay of ^{241}Pu ($T_{1/2} = 14.35$ y). Main sources of ^{241}Am in the environment are fallout of ^{241}Pu from nuclear weapon tests in the 1950s and '60s and the discharge of ^{241}Am and ^{241}Pu from reprocessing plants.

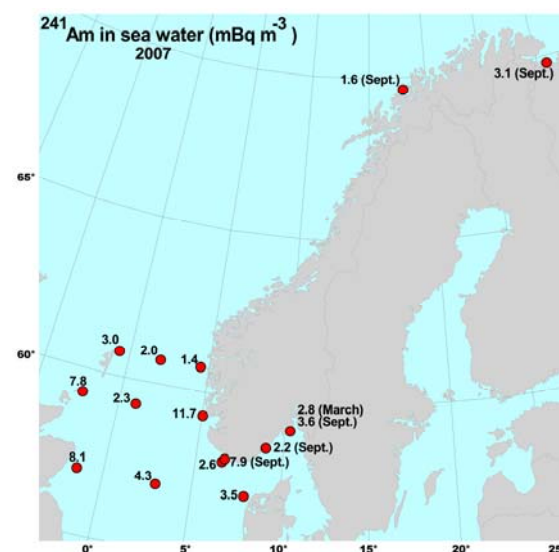


Figure 4.8. Activity concentration (mBq m^{-3}) of ^{241}Am in seawater from the North Sea, the Skagerrak and the Barents Sea in 2007.

Measured activity concentrations of ^{241}Am in the North Sea and the Skagerrak in 2007 are presented in Figure 4.8 and range from 1.4 to 11.7 mBq m^{-3} . The highest levels were found in samples collected off the Scottish coast and in the Norwegian coastal current.

5 Radioactivity in biota

5.1 Technetium-99 in seaweed



Figure 5.1. Brown seaweed (*Fucus vesiculosus*) (Photo:NRPA).

Seaweed is a useful bioindicator for ^{99}Tc in the marine environment. It has a high ability to concentrate ^{99}Tc from seawater and is easy accessible in most coastal areas. During 2007, seaweed (*Fucus vesiculosus*, Fig 5.1) was collected at the permanent coastal sampling stations along the Norwegian coastline and analysed for ^{99}Tc . At two locations, Hillesøy and Utsira, sampling was performed monthly. At the remaining sites sampling was conducted in August or September. The results of the analyses are presented in Figure 5.2 and range from 45 to 146 Bq kg^{-1} (d.w.), where the highest activity concentration (232 Bq kg^{-1} d.w.) was found in one of the monthly samples collected at Utsira. Compared with the results from 1999-2001 (Rudjord *et al.*, 2001; Gäfvert *et al.*, 2003), the levels of ^{99}Tc have decreased at most sampling sites. The trend can also be seen in Figures 5.3 and 5.4 which show the annual average activity concentration of ^{99}Tc in *Fucus vesiculosus* at Utsira and Hillesøy, together with the annual discharge of ^{99}Tc from Sellafield. The maximum levels in Figures 5.3 and 5.4 are the response to the increased discharge from Sellafield in the mid 1990s. From Figures 5.3 and 5.4, one can see that the peak in ^{99}Tc levels in *F. vesiculosus* occurred after about 3-4 years at Utsira and about 4-5 years at Hillesøy further down-stream. The levels of ^{99}Tc in *Fucus vesiculosus* from Hillesøy and Utsira are now decreasing due to the reduced discharge of ^{99}Tc from Sellafield.

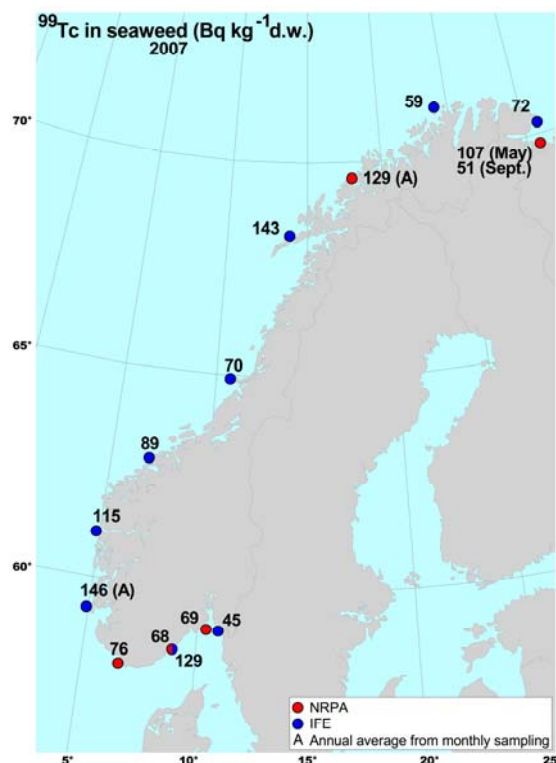


Figure 5.2. Levels of ^{99}Tc in *Fucus vesiculosus* sampled along the Norwegian coastline in 2007.

Tc-99 was also analysed in samples of *Ascophyllum nodosum* collected at Utsira in the period 1997 - 2007 (Fig. 5.5). *Ascophyllum nodosum* is known to have a relatively high concentration factor for ^{99}Tc . Holm and Rioseco (1986) have shown that the concentration factor for ^{99}Tc in *Ascophyllum nodosum* are about twice as high as for *Fucus vesiculosus*. The highest level found at Utsira, 614 Bq kg^{-1} (d.w.), was observed in 1999. Since then the levels have decreased and in 2007 the activity concentration was found to be 99 Bq kg^{-1} (d.w.).

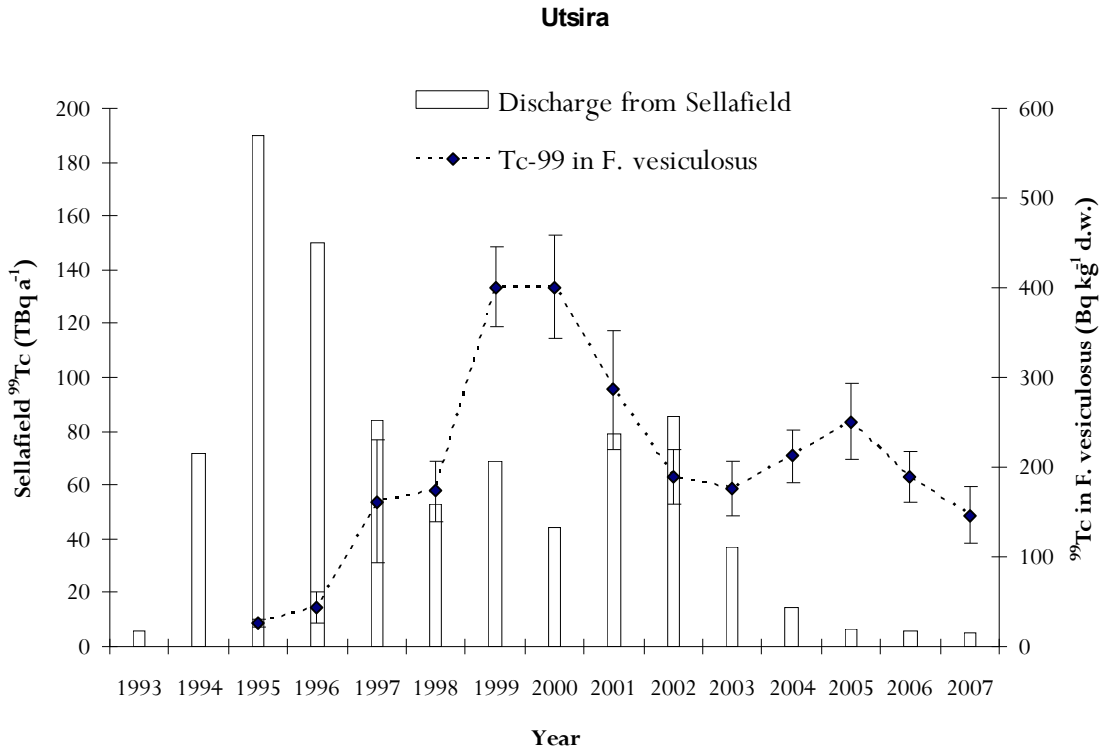


Figure 5.3. Annual liquid discharge of ^{99}Tc from Sellafield (primary axis) and annual average (with 95 % confidence limits) ^{99}Tc activity concentration in brown algae (*Fucus vesiculosus*) sampled at Utsira (data provided by IFE) in the period 1995-2007 (secondary axis).

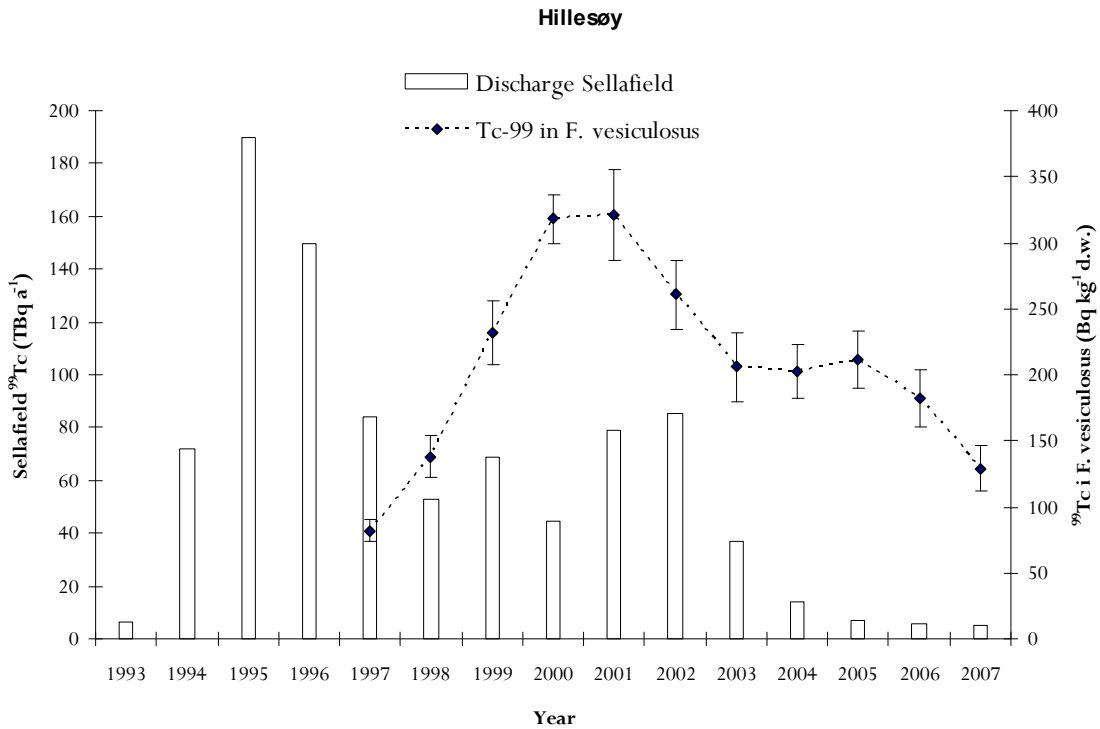


Figure 5.4. Annual liquid discharge of ^{99}Tc from Sellafield (primary axis) and annual average (with 95 % confidence limits) ^{99}Tc activity concentration in brown algae (*Fucus vesiculosus*) sampled at Hillesøy in the period 1997-2007 (secondary axis).

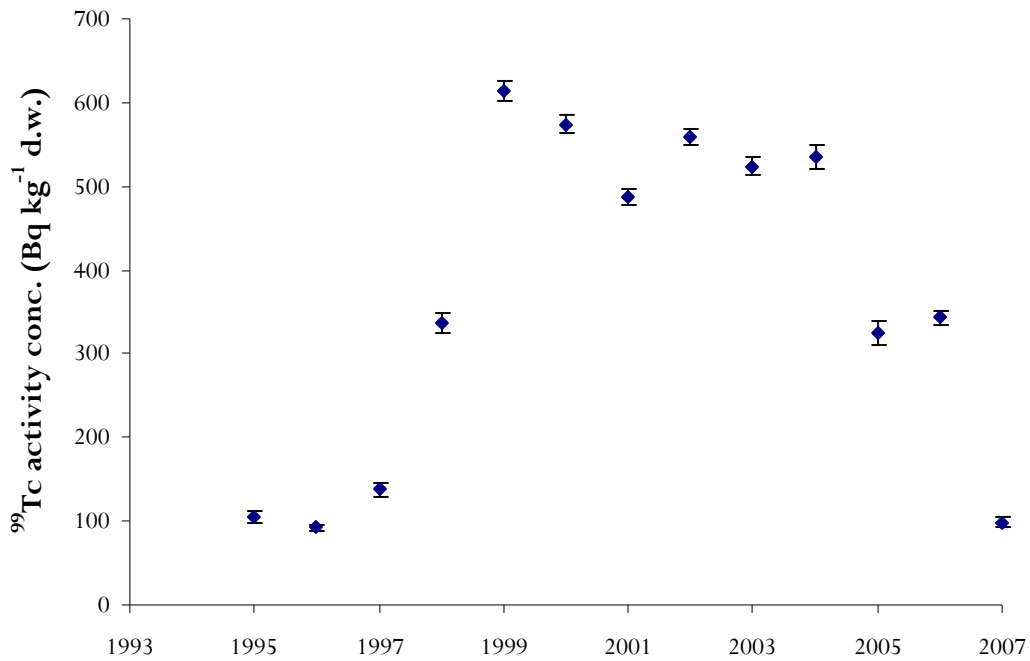


Figure 5.5. Activity concentration ($Bq\ kg^{-1}\ d.w.$) of ^{99}Tc in seaweed (*Ascophyllum nodosum*) sampled at Utsira in the period 1995 to 2007 (data provided by IFE).

5.2 Plutonium-239+240 in seaweed

Fucus vesiculosus has been collected and analysed for $^{239+240}Pu$ at Utsira since 1980. The results from the period 1980 to 2007 are presented in Figure 5.6. The activity concentrations in these samples were in the

range 36 to 201 $mBq\ kg^{-1}$, with relatively large fluctuations from year to year. One can see a slowly decreasing trend in the activity concentration of $^{239+240}Pu$ in the seaweed samples collected in the period from 1980 to 2007.

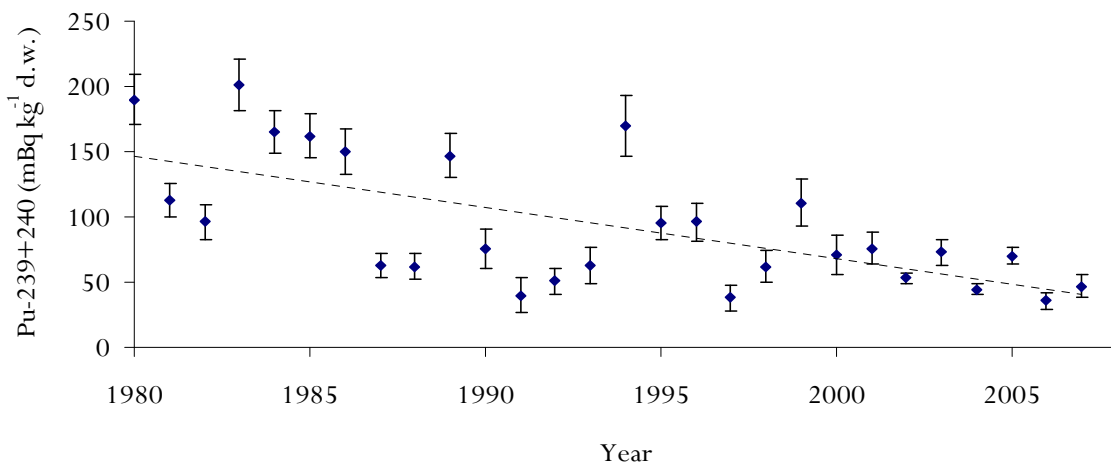


Figure 5.6. $^{239+240}Pu$ levels ($mBq\ kg^{-1}\ d.w.$) in *Fucus vesiculosus* at Utsira in the period 1980 to 2007 (data provided by IFE).

5.3 Caesium-137 in seaweed

Fucus vesiculosus has also been widely used as a bioindicator for ^{137}Cs . The accumulation of ^{137}Cs in brown algae is, however, not as pronounced as for ^{99}Tc . The uptake of ^{137}Cs also depends on the salinity of the surrounding sea water, with higher uptake at lower salinities (Carlsson and Erlandsson, 1991).

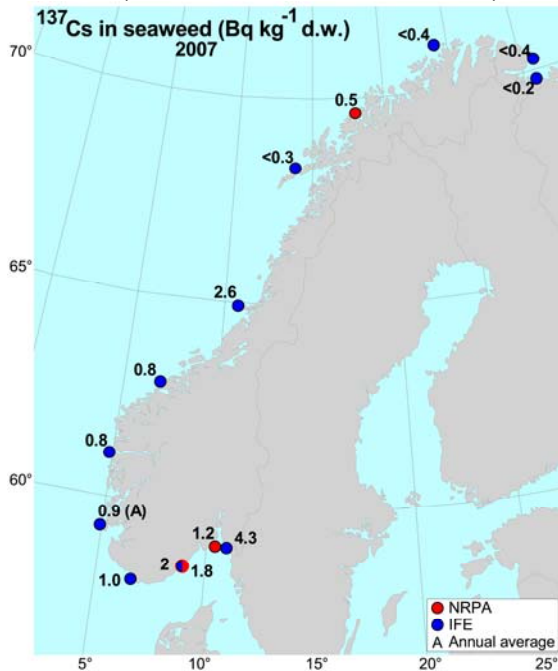


Figure 5.7. Levels of ^{137}Cs ($\text{Bq kg}^{-1} \text{ d.w.}$) in *Fucus vesiculosus* sampled along the Norwegian coastline in 2007.

In 2007, samples of *Fucus vesiculosus* from the permanent coastal stations (see Figure 3.1) were analysed with respect to ^{137}Cs . The results are presented in Figure 5.7, and range from $< 0.2 \text{ Bq kg}^{-1} \text{ (d.w.)}$ in the north to $4.3 \text{ Bq kg}^{-1} \text{ (d.w.)}$ at Vikna. The peak in the ^{137}Cs levels in seaweed collected at Vikna can be explained by run-off of ^{137}Cs from land, since this area was affected by fallout from the Chernobyl accident in 1986. The reason for the higher activity concentration in *Fucus vesiculosus* in the southern part of Norway is a combination of two effects. First, the salinity in the water is lower and secondly, that the activity concentration of ^{137}Cs in the seawater is higher due to outflowing Baltic Sea water contaminated by the Chernobyl accident. Comparing those results with the levels found at the coastal sampling stations in the period 2000-2006 (Gäfvvert *et al.*, 2003; NRPA, 2004, NRPA 2005, NRPA 2006, NRPA 2007 and NRPA, 2008), one can see that the activity concentration of ^{137}Cs in *F. vesiculosus* has been relatively stable during recent years. In the southern part of Norway the levels have been in the range 1.2 to $6.0 \text{ Bq kg}^{-1} \text{ (d.w.)}$, while in the northern part all results have been below $1 \text{ Bq kg}^{-1} \text{ (d.w.)}$. Data from monthly sampling at Utsira (Figure 5.8) show that the activity concentration of ^{137}Cs is slowly decreasing in seaweed. This is in agreement with the reported temporal trend of ^{137}Cs in Baltic Sea seawater (Ikäheimonen *et al.* 2009).

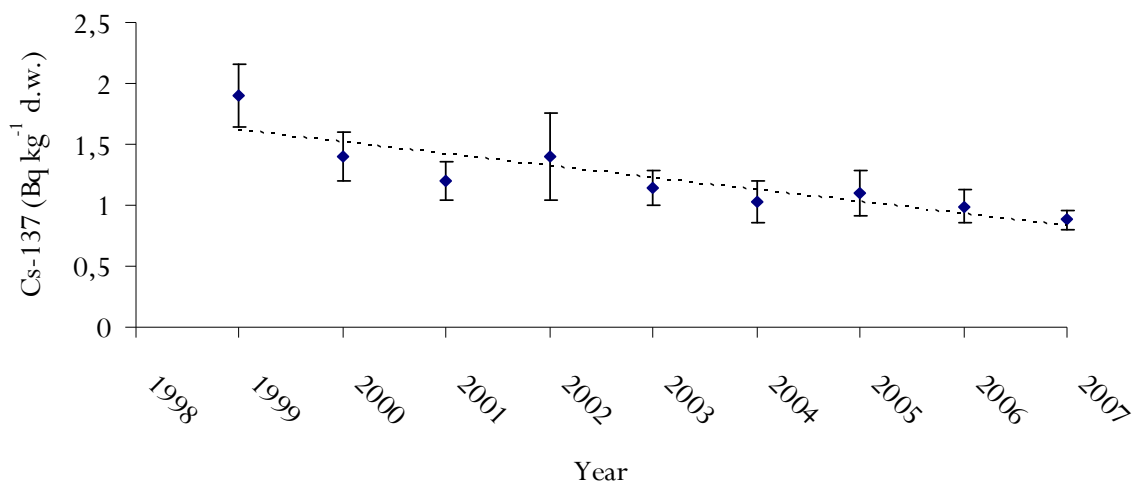


Figure 5.8. Average activity concentration ($\text{Bq kg}^{-1} \text{ d.w.}$) from monthly sampling in seaweed (*Fucus vesiculosus*) from Utsira in the period 1999-2007 (data from IFE).

5.4 Caesium-137 and polonium-210 in fish and crustaceans

Samples of cod collected in the Barents Sea have been analysed for ^{137}Cs since the 1990s. In Figures 5.9 and 5.10 the activity concentration of ^{137}Cs in muscle tissue from cod caught in two areas of the Barents Sea is

shown. Almost all samples from both locations are below 1 Bq kg^{-1} (w.w.), and in recent years below 0.5 Bq kg^{-1} (w.w.). The results show a slightly decreasing level of ^{137}Cs in the period 1992-2007.

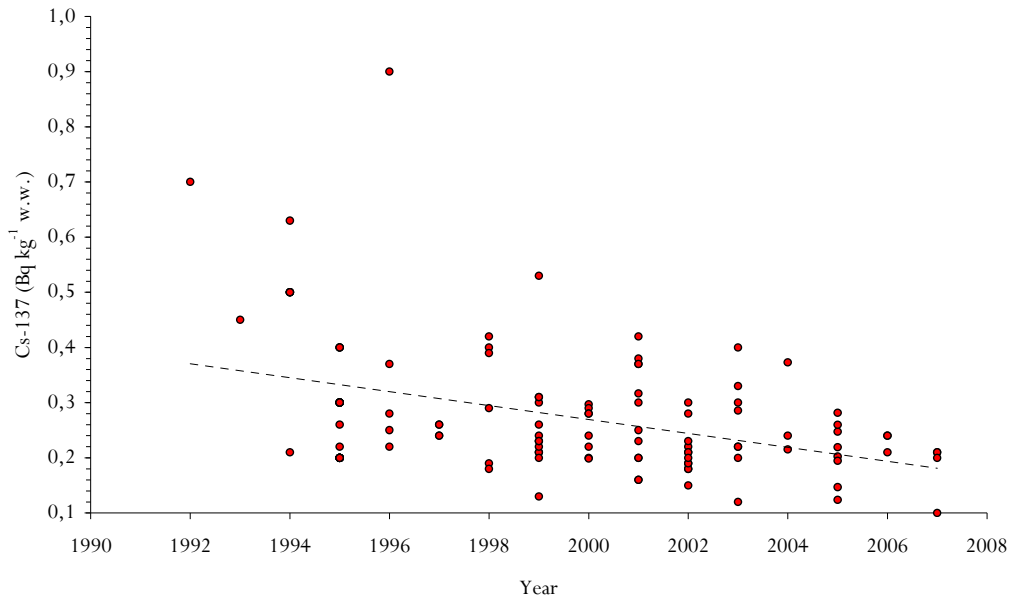


Figure 5.9. Activity concentration of ^{137}Cs (Bq kg^{-1} w.w.) in cod from the Barents Sea (the area around Bjørnøya) sampled in the period 1992 to 2007.

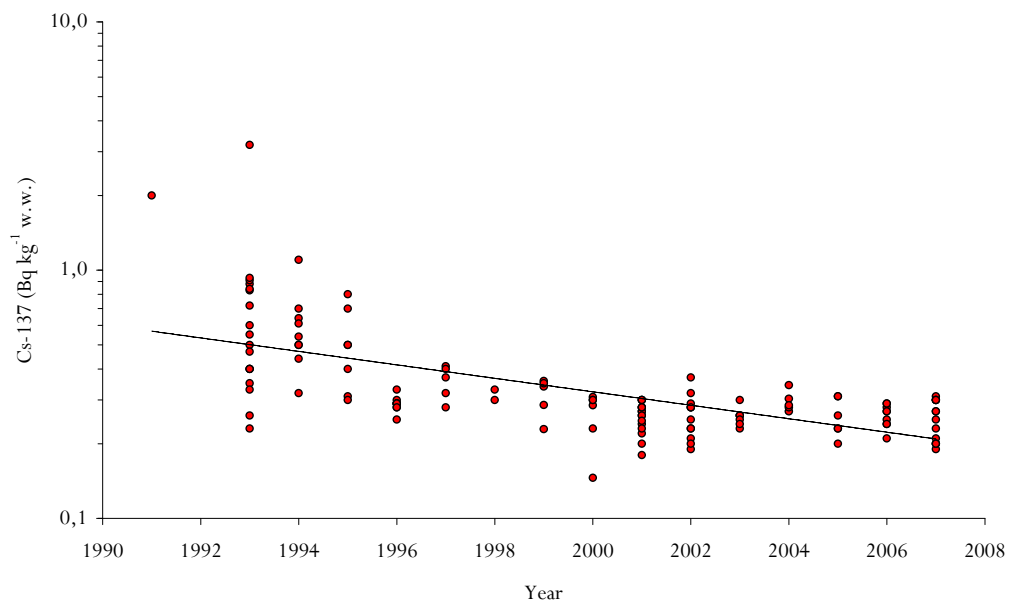


Figure 5.10. Activity concentration of ^{137}Cs (Bq kg^{-1} w.w.) in cod from off the coast of Finnmark sampled in the period 1991 to 2007.

Cs-137 levels in fish species caught in a number Norwegian fjords and in the Barents Sea in 2007 are shown in Table 5.1. and 5.2.. All obtained results were below 0.6 Bq kg⁻¹ (w.w.).

Table 5.1. Activity conc. (Bq kg⁻¹ w.w.) of ¹³⁷Cs in fish and crustaceans from Norwegian marine waters in 2007.

Species	Location	No. of samples (total no.of fish muscles)	¹³⁷ Cs (Bq kg ⁻¹ w.w.)
Cod (<i>Gadus morhua</i>)	Barents Sea	6 samples (225 muscles)	<0.1-0.3 ± 0.1
Haddock (<i>Melanogrammus aenglefinus</i>)		1 sample (25 muscles)	<0.3
Saithe (<i>Pollachius virens</i>)		1 sample (25 muscles)	0.2 ± 0.1
Atlantic Herring (<i>Clupea harengus</i>)		1 sample (25 muscles)	0.1 ± 0.1
Capelin (<i>Mallotus villosus</i>)		1 sample (50 muscles)	<0.2
Deepwater redfish (<i>Sebastes mentella</i>)		2 sample (50 muscles)	<0.3 and 0.2 ± 0.1
American plaice (<i>Hippoglossoides platessoides</i>)		2 samples (50 muscles)	<0.2 and <0.4
Greenland halibut (<i>Reinhardtius hippoglossoides</i>)		2 samples (50 muscles)	0.2 ± 0.1 and 0.2 ± 0.1
Blue whiting (<i>Micromesistius poutassou</i>)		1 sample (25 muscles)	0.1 ± 0.1
Norway pout (<i>Trisopterus esmarkii</i>)		1 sample (25 muscles)	<0.2
Shrimps <i>Pandalus borealis</i>		1 kg (pooled)	<0.5
Atlantic Herring (<i>Clupea harengus</i>)		Norwegian Sea	1 sample (25 muscles)
Cod (<i>Gadus morhua</i>)	Coastal waters of Finnmark and Troms	10 samples (325 muscles)	0.2 ± 0.1-0.3 ± 0.2
(Haddock <i>Melanogrammus aenglefinus</i>)		1 sample (25 muscles)	<0.4
Saithe (<i>Pollachius virens</i>)		1 sample (25 muscles)	0.2 ± 0.1
Shrimps <i>Pandalus borealis</i>		1 kg (pooled)	<0.3
Kamtchatca crab (<i>Paralithodes camtschaticus</i>)		1 kg (pooled)	<0.1
Cod (<i>Gadus morhua</i>)	Coastal waters of Nordland	1 sample (25 muscles)	0.2 ± 0.1
Saithe (<i>Pollachius virens</i>)		2 samples (50 muscles)	0.3 ± 0.1 and 0.3 ± 0.1
Salmon (<i>Salmo salar</i>)	Farmed fish – coastal waters of Troms and Nordland	2 samples (50 muscles)	<0.1 and 0.2 ± 0.1

Table 5.2. Activity concentration ($Bq\ kg^{-1}\ w.w.$) of ^{137}Cs in fish from Norwegian fjords in 2007.

Species	Sample type	^{137}Cs ($Bq\ kg^{-1}\ w.w.$)	Location
Cod (<i>Gadus morhua</i>)	15 muscle tissue (pooled)	0.2 ± 0.1	Varangerfjorden
Cod (<i>Gadus morhua</i>)	11 muscle tissue (pooled)	0.3 ± 0.1	Tanafjorden
Cod (<i>Gadus morhua</i>)	8 muscle tissue (pooled)	0.3 ± 0.1	Laksefjorden
Cod (<i>Gadus morhua</i>)	8 muscle tissue (pooled)	0.3 ± 0.1	Porsangerfjorden
Cod (<i>Gadus morhua</i>)	6 muscle tissue (pooled)	0.4 ± 0.1	Kvænangen
Cod (<i>Gadus morhua</i>)	16 muscle tissue (pooled)	0.4 ± 0.1	Lyngenfjorden
Cod (<i>Gadus morhua</i>)	7 muscle tissue (pooled)	0.3 ± 0.1	Balsfjorden
Cod (<i>Gadus morhua</i>)	6 muscle tissue (pooled)	0.5 ± 0.1	Malangen
Haddock (<i>Melanogrammus aeglefinus</i>)	25 muscle tissue (pooled)	0.1 ± 0.1	Varangerfjorden
Haddock (<i>Melanogrammus aeglefinus</i>)	25 muscle tissue (pooled)	0.1 ± 0.1	Tanafjorden
Haddock (<i>Melanogrammus aeglefinus</i>)	25 muscle tissue (pooled)	< 0.3	Laksefjorden
Haddock (<i>Melanogrammus aeglefinus</i>)	25 muscle tissue (pooled)	0.1 ± 0.1	Porsangerfjorden
Haddock (<i>Melanogrammus aeglefinus</i>)	25 muscle tissue (pooled)	0.2 ± 0.1	Altafjorden
Haddock (<i>Melanogrammus aeglefinus</i>)	25 muscle tissue (pooled)	0.1 ± 0.1	Kvænangen
Haddock (<i>Melanogrammus aeglefinus</i>)	17 muscle tissue (pooled)	0.2 ± 0.1	Lyngenfjorden
Haddock (<i>Melanogrammus aeglefinus</i>)	8 muscle tissue (pooled)	< 0.4	Malangen
Saithe (<i>Pollachius virens</i>)	5 muscle tissue (pooled)	0.4 ± 0.1	Lyngenfjorden
Whiting (<i>Merlangius merlangus</i>)	25 muscle tissue (pooled)	0.4 ± 0.1	Altafjorden
Capelin (<i>Mallotus villosus</i>)	33 muscle tissue (pooled)	< 0.3	Varangerfjorden
Atlantic Herring (<i>Clupea harengus</i>)	whole fish	0.1 ± 0.1	Varangerfjorden
Atlantic Herring (<i>Clupea harengus</i>)	whole fish	0.1 ± 0.1	Malangen

Polonium-210 is a naturally occurring radionuclide with a half-life of 138 days. It is a member of the uranium decay series and a daughter of ^{210}Pb ($T_{1/2}=22\ y$). The main sources of ^{210}Po in the marine environment is atmospheric input of ^{210}Pb (originates from the decay of ^{222}Rn in the atmosphere) and *in situ* production from the decay of the grand parent ^{226}Ra , via the short-lived intermediate ^{222}Rn (Cherry and Heyraud, 1988). Due to the relatively high uptake of ^{210}Po in many marine species and the radiotoxicity of this alpha-emitting radionuclide, it has been shown that ^{210}Po is responsible for the major part of the dose from intake of seafood (IAEA, 1995; Aarkrog et al. 1997). In 2007, 19 samples

of cod (*Gadus morhua*) caught in the Barents Sea (71.68 N; 26.83 E) were analysed with respect to ^{210}Po . The average activity concentration in the samples was $0.15 \pm 0.09 \text{ Bq kg}^{-1}$ (w.w.). This is in agreement with earlier reported results for cod (*Gadus morhua*) in the Barents Sea (Holm, 1994). ^{210}Po and ^{137}Cs have also been analysed in mussels (*Mytilus edulis*) collected at eight locations along the Norwegian coast. The results are presented in Table 5.2.

Table 5.2. Activity concentration of ^{210}Po and ^{137}Cs in mussel (*Mytilus edulis*) soft tissue.

Location	^{137}Cs (Bq kg ⁻¹ w.w.)	^{210}Po (Bq kg ⁻¹ w.w.)
Hvaler	0.16 ± 0.02	1.3 ± 0.1
Tønsberg	0.08 ± 0.02	0.8 ± 0.1
Egersund	< 0.12	5.9 ± 0.6
Stigevika	< 0.18	5.7 ± 0.6
Vemmelsvik	< 0.08	1.8 ± 0.2
Molde	< 0.21	4.2 ± 0.4
Askerholmen	0.06 ± 0.01	1.1 ± 0.1
Kjempebakken	< 0.11	1.8 ± 0.2



Figure 5.11. Overview of sampling locations.

5.5 Technetium-99 in lobster

Samples of lobster (*Homarus gammarus*) have been collected near Sandøya (see Figure 3.1) and analysed for ^{99}Tc since 2003. Lobsters have previously been identified as a marine organism with a high ability to accumulate ^{99}Tc from seawater (Swift, 1985; Smith *et al.*, 1998; Smith *et al.*, 2001). The observed levels in lobster tail muscle are presented in Figure 5.11 and Figure 5.12. In 2007 the average

activity concentration in male and female lobster tail muscle was $1.3 \text{ Bq kg}^{-1} \text{ w.w.}$ (range 0.4-1.9) and $5.8 \text{ Bq kg}^{-1} \text{ w.w.}$ (range 1.5-12.7), respectively. From Figure 5.9 and 5.10 one can see that the levels of ^{99}Tc in lobster are decreasing. It is also possible to see a clear difference between female and male lobsters, where female lobsters have a significantly higher uptake of ^{99}Tc .

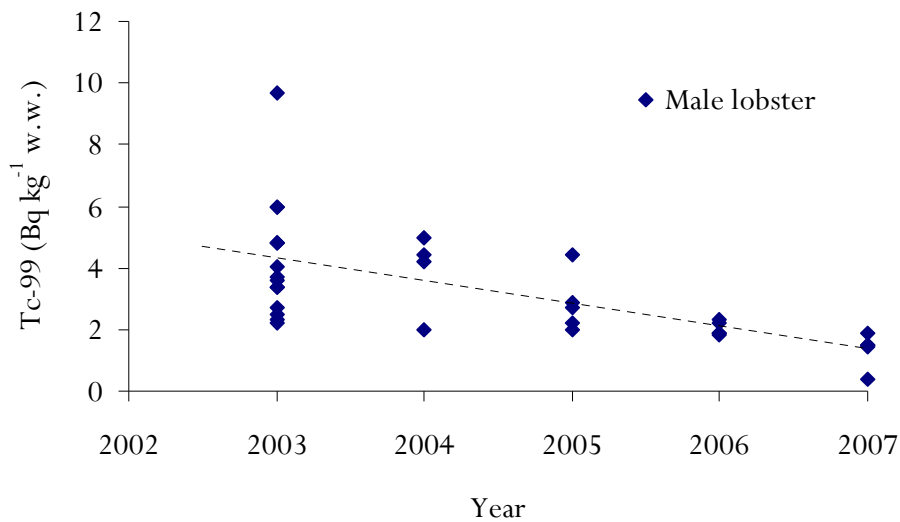


Figure 5.11. Average activity concentration and range of ^{99}Tc in tail muscle from male lobster (*Homarus gammarus*) sampled near Sandøya in the period 2003-2007.

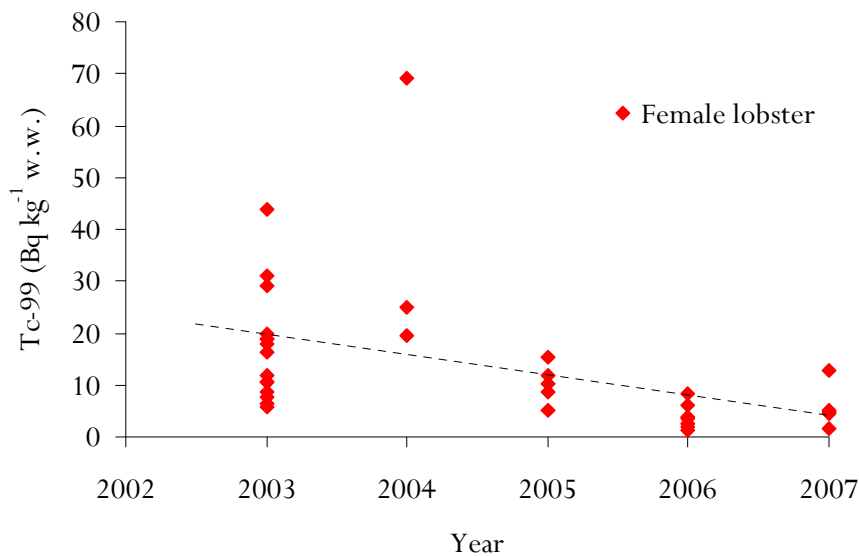


Figure 5.12. Average activity concentration and range of ^{99}Tc in tail muscle from female lobster (*Homarus gammarus*) sampled near Sandøya in the period 2003-2007.

6 Summary and conclusions

In 2007 samples of seawater, sediment, and seaweed were collected in the North Sea, the Skagerrak and at a number of coastal stations and fjords. Data on radioactivity levels and trends in these areas together with data on liquid discharges from nuclear installations and recent trends in such discharges are summarised in this report.

6.1 Sources

The liquid discharges from the nuclear facilities of IFE at Kjeller and in Halden in 2007 are within authorised limits according to the estimates made by the operator. The effective dose to a member of the critical group from liquid radioactive discharge at Kjeller was estimated to be 0.09 μSv in 2007, which correspond to 9 % of the dose limit. The effective dose to the critical group from IFE Halden liquid radioactive discharge was estimated to be 0.017 μSv in 2007, corresponding to 1.7 % of the dose limit. The discharge of anthropogenic radionuclides from Norwegian sources is only detectable in the environment close to each discharge point and has no significant impact on the large-scale distribution of these radionuclides in the marine environment.

Produced water from offshore oil production may contain enhanced levels of naturally occurring radium isotopes. The reported total discharge of ^{226}Ra and ^{228}Ra in produced water from Norwegian platforms in 2007 was 530 GBq and 400 GBq, respectively, where about 40 % was discharged from 2 platforms, Troll B and Troll C.

The long-range transports of radionuclides originating from nuclear weapons fallout, the Chernobyl accident and from reprocessing of spent nuclear fuel are still the main contributors to anthropogenic radionuclides found in Norwegian waters. In addition to direct discharges from reprocessing, water from the Baltic Sea and remobilisation of ^{137}Cs and plutonium from contaminated Irish Sea sediments act as secondary sources of radionuclides to the Norwegian marine environment.

6.2 Radioactivity in seawater and sediment

In 2007, samples of seawater and sediment were collected in the North Sea, the Skagerrak and the Barents Sea and analysed with respect to ^{137}Cs , ^{99}Tc , ^{90}Sr , $^{239+240}\text{Pu}$ and ^{241}Am . A general trend seen in most samples is that the levels of radioactivity are similar, or slightly lower than have been observed in recent years.

6.2.1 Caesium-137 in seawater

Observed levels of ^{137}Cs in surface water in the North Sea, the Skagerrak and the Barents Sea in 2007 ranged from 1.2 to 10.3 Bq m^{-3} . This is generally similar or slightly lower to the levels observed in 2004 and 2005 in the same areas. The highest activity concentrations were found in the Kattegat. This can be explained by outflowing seawater from the Baltic Sea, which was significantly affected by the Chernobyl accident in 1986.

6.2.2 Technetium-99 in seawater

Samples of seawater were collected mainly in the North Sea. Levels of ^{99}Tc in surface seawater ranged from 0.11 Bq m^{-3} to 1.5 Bq m^{-3} . Highest activity concentrations were observed in samples collected off the Scottish coast. Average activity concentration from monthly sampling at Hillesøy was 0.5 ± 0.1 , which is significantly lower than the peak values observed in 1999/2000, and slightly lower than the average activity concentration found in 2006. Due to the reduced discharge from Sellafield since 2004, the levels are expected to continue to decrease.

6.2.3 Strontium-90 in seawater

The activity concentration in surface seawater sampled in the North Sea and in the Skagerrak ranged from 0.7 Bq m^{-3} to 3.3 Bq m^{-3} in 2007. The highest concentrations were found off the southern coast of Norway in the Skagerrak. The levels of ^{90}Sr in both the North Sea and the Skagerrak are similar or lower than those observed in 2004 and 2005.

6.2.4 Plutonium-239+240 and americium-241 in seawater

Observed levels of $^{239+240}\text{Pu}$ in the North Sea and the Skagerrak in 2007 ranged from 2.9 to 46.7 mBq m⁻³, where the highest level was found off the coast of Scotland. The observed levels of $^{239+240}\text{Pu}$ in 2007 are similar to those found in the same area in 2001, 2004 and 2005.

The activity concentration of ^{241}Am in seawater from the North Sea and the Skagerrak ranged from 1.4 to 11.7 mBq m⁻³. This is similar to what was observed in 2004 in the same area.

6.3 Radioactivity in biota

6.3.1 Technetium-99 in seaweed

Samples of *Fucus vesiculosus* sampled at the permanent coastal stations showed activity concentrations in the range 45 to 146 Bq kg⁻¹ (d.w.). For most stations the levels were similar or slightly lower in 2007 compared to observed levels in the period 2002 - 2006. The levels in 2007 are however significantly lower than the peak values observed in the period 1999-2001. Monthly sampling at Hillesøy and Utsira show that the levels of ^{99}Tc in seaweed are now decreasing due to the reduced discharge of ^{99}Tc from Sellafield since 2004.

6.3.2 Caesium-137 in seaweed

The activity concentration of ^{137}Cs in *Fucus vesiculosus* sampled at the coastal stations was in the range from < 0.2 to 4.3 Bq kg⁻¹ (d.w.), where the highest levels were found at Hvaler in the southern part of Norway. Data from monthly sampling at Utsira indicates that the levels of ^{137}Cs in seaweed are slowly decreasing.

6.3.3 Caesium-137 in fish

Different species of fish and, commercially important and others, have been sampled in the Barents Sea and selected fjords. The activity concentration of ^{137}Cs in fish from Norwegian marine waters is generally low. All analysed samples were below 0.6 Bq kg⁻¹ (w.w.).

6.3.4 Technetium-99 in crustaceans

Samples of lobster have been collected near Sandøya in the southern part of Norway since 2003. Average activity concentration of ^{99}Tc in

male and female lobster tail muscle in 2007 was 1.3 Bq kg⁻¹ w.w. and 5.8 Bq kg⁻¹ w.w., respectively. The levels of ^{99}Tc in lobster have decreased since 2003 due to the reduced discharges at Sellafield.

7 References

Aarkrog et al. 1997

Aarkrog A, Baxter MS, Bettencourt AO, Bojanowski R, Bologna A, Charmasson S, Cunha I, Delfanti R, Duran E, Holm E, Jeffree R, Livingston HD, Mahapanyawong S, Nies H, Osvath I, Pingyu Li, Povinec PP, Sanchez A, Smith JN, Swift D. A comparison of doses from ^{137}Cs and ^{210}Po in marine food: a major international study. *Journal of Environmental Radioactivity*, 1997, 34(1); 69-90.

Amundsen et al. 2003

Amundsen I, Brekken A, Liland A. Utslipp av radioaktive stoffer fra Sellafield-anleggene. En gjennomgang av britiske myndigheters regulering av utslippstillatelser. StrålevernRapport 2003:2. Østerås: Statens strålevern, 2003 (In Norwegian, English summary).

http://www.nrpa.no/archive/Internett/Publikasjoner/Stralevernrapport/2003/StralevernRapport_2_2003.pdf (17.12.08)

Bourlat et al. 1996

Bourlat Y, Milliès-Lacroix J-C, Le Petit G, Bourguignon J. ^{90}Sr , ^{137}Cs and $^{239+240}\text{Pu}$ in world ocean water samples collected from 1992 to 1994. In: Guéguéniat P, Germain P, Métivier H, eds. *Radionuclides in the oceans*. Les Ulis: Institute de Protection et de Sureté Nucleaire / Les editions de physique, 1996: 75-93.

Brown et al. 2002

Brown J, Iospje M, Kolstad AK., Lind B, Rudjord AL, Strand P. Temporal trends for ^{99}Tc in Norwegian coastal environments and spatial distribution in the Barents Sea. *Journal of Environmental Radioactivity* 2002; 60: 49-60.

Carlsson and Erlandsson, 1991

Carlsson L, Erlandsson B. Effects of salinity on the uptake of radionuclides by *Fucus vesiculosus* L. *Journal of Environmental Radioactivity* 1991; 13: 309-322.

Chen et al. 1991

Chen Q et al. Determination of plutonium in environmental samples by controlled valence

in anion exchange. RISØ-M-2856. Roskilde: Risø National Laboratory, 1991.

Chen et al. 2001

Chen Q, Aakrog A, Nielsen SP, Dahlgaard H, Lind B, Kolstad AK, Yu, Y. Procedures for determination of $^{239,240}\text{Pu}$, ^{241}Am , ^{237}Np , $^{234,238}\text{U}$, $^{228,230,232}\text{Th}$, ^{99}Tc , ^{210}Pb and ^{210}Po in environmental materials. Risø-R-1263. Roskilde: Risø National Laboratory, 2001. <http://www.risoe.dk/risepubl/NUK/nukpdf/ris-r-1263.pdf> (18.12.08)

Cherry and Heyraud, 1988

Cherry C.D. and Heyraud M. Lead-210 and polonium-210 in the world's oceans. In: *Inventories of selected radionuclides in the oceans*. IAEA TECDOC-481. Vienna: International Atomic Energy Agency, IAEA, 1988: 139-158. http://www-pub.iaea.org/MTCD/publications/PDF/te_481_web.pdf (17.12.09)

Cook et al. 1997

Cook GT, Mac Kenzie AB, Mc Donald P and Jones SR. Remobilization of Sellafield-derived radionuclides and transport from the North-East Irish Sea. *Journal of Environmental Radioactivity* 1997; 35: 227-241.

Dahlgaard, 1995

Dahlgaard H. Transfer of European coastal pollution to the Arctic: Radioactive tracers. *Marine Pollution Bulletin* 1995; 31: 3-7.

Dahlgaard, 2002

Dahlgaard H. Baltic ^{137}Cs outflow through the Danish Straits indicates remobilisation. In: Strand P, Børretzen P, Jølle T, eds. *International conference on radioactivity in the environment, Monaco 2002*. Extended abstracts. Østerås: Norwegian Radiation Protection Authority, 2002: 516-520.

Evans, 1991

Evans S. Impacts of the Chernobyl fallout in the Baltic Sea ecosystem. In: Moberg L, ed. *The Chernobyl fallout in Sweden*. Stockholm: Swedish Radiation Protection Institute, 1991: 109-127.

Gäfvvert et al. 2003

Gäfvvert T, Føyn L, Brungot AL, Kolstad AK, Lind B, Christensen GC, Strålberg E, Drefvelin J, Rudjord AL.. Radioactivity in the

marine environment 2000 and 2001. Results from the Norwegian National Monitoring Programme (RAME). StrålevernRapport 2003:8. Østerås: Norwegian Radiation Protection Authority, 2003.
http://www.nrpa.no/archive/Internett/Publikasjoner/Stralevernrapport/2003/StralevernRapport_8_2003.pdf (18.12.08)

HELCOM, 2009
HELCOM, 2009. Radioactivity in the Baltic Sea, 1999-2006. HELCOM thematic assessment. Baltic Sea Environment. Proceedings 117. Helsinki: Helsinki Commission, HELCOM, 2009.
<http://www.helcom.fi/stc/files/Publications/Proceedings/bsep117.pdf> (17.12.09)

Harvey et al. 1992
Harvey BR, Williams KJ, Lovett MB, Ibbett RD. Determination of technetium-99 in environmental material with rhenium as a yield monitor. Journal of Radioanalytical and Nuclear Chemistry 1992; 158: 417-436.

Holm et al. 1984
Holm E, Rioseco J, Garcia-Leon, M. Determination of ⁹⁹Tc in environmental samples. Nuclear Instruments and Methods in Physics Research 1984; 223: 204-207.

Holm et al. 1986
Holm E et al. Technetium-99 in algae from temperate and arctic waters of the North Atlantic. In: Desmet G, Myttenaere C. Technetium in the environment. EUR 10102. London: Elsevier Applied Science, 1986: 53-59.

Holm, 1994
Holm E. Polonium-210 and radiocaesium in muscle tissue of fish from different Nordic marine areas. In: Dahlgard H, ed. Nordic radioecology, the transfer of radionuclides through Nordic ecosystems to man. Studies in Environmental Science 62. Amsterdam: Elsevier, 1994.

IAEA, 1995
IAEA, International Atomic Energy Agency. Sources of radioactivity in the marine environment and their relative contributions to overall dose assessment from marine radioactivity (MARDOS). IAEA-TECDOC-

838. Vienna: International Atomic Energy Agency, 1995. http://www-pub.iaea.org/MTCD/publications/PDF/te_838_web.pdf (17.12.09)

IFE, 2004a
Institutt for energiteknikk, IFE. Kontroll av radionuklider i utslipp til luft og vann og i prøveobjekter fra IFE Kjellers omegn, Nitelva og Himdalen. Rapport for 2003. IFE Rapport nr: IFE/I-2004/012. Kjeller: IFE, 2004.

IFE, 2005a
Institutt for energiteknikk, IFE. Kontroll av radionuklider i utslipp til luft og vann og i prøveobjekter fra IFE Kjellers omegn, Nitelva og Himdalen. Rapport for 2004. IFE Rapport nr: IFE/I-2005/009. Kjeller: IFE, 2005.

IFE, 2006a
Institutt for energiteknikk, IFE. Måling av radioaktive stoffer i utslipp til luft, i avløpsvann og i prøveobjekter fra IFE Kjellers omegn og Nitelva. Rapport for 2005. IFE Rapport nr: IFE/I-2006/012. Kjeller: IFE, 2006.

IFE, 2007a
Institutt for energiteknikk, IFE. Måling av radioaktive stoffer i utslipp til luft, i avløpsvann og i prøveobjekter fra IFE Kjellers omegn, Nitelva og Himdalen - Rapport for 2006. IFE Rapport nr: IFE/I-2007/007. Kjeller: IFE, 2007.

IFE, 2008a
Institutt for energiteknikk, IFE. Kontroll av radioaktive stoffer i utslipp til luft og vann og i prøveobjekter fra IFE Kjellers omegn, Nitelva og Himdalen. Rapport for 2007. IFE Rapport nr: IFE/I-2008/005. Kjeller: IFE, 2008.

IFE, 2004b
Institutt for energiteknikk, IFE. Utslipp fra drift av Haldenreaktoren i 2003. Sv-rapport 586. Halden: IFE, 2004.

IFE, 2005b
Institutt for energiteknikk, IFE. Utslipp fra drift av Haldenreaktoren i 2004. Sv-rapport 629. Halden: IFE, 2005.

IFE, 2006b

Institutt for energiteknikk, IFE. Utslipp fra drift av Haldenreaktoren i 2005. Sv-rapport 666. Halden: IFE, 2006.

IFE, 2007b

Institutt for energiteknikk, IFE. Utslipp fra drift av Haldenreaktoren i 2006. Sv-rapport 693. Halden: IFE, 2007.

IFE, 2008b

Institutt for energiteknikk, IFE. Utslipp fra drift av Haldenreaktoren i 2007. Sv-rapport 726. Halden: IFE, 2008.

Ikäheimonen et al. 2009

Ikäheimonen TK et al. Radioactivity in the Baltic Sea : inventories and temporal trends of ¹³⁷Cs and ⁹⁰Sr in water and sediments. Journal of Radioanalytical and Nuclear Chemistry 2009; 282(9): 419-425.

Kolstad, 1995

Kolstad AK. Expeditions to «Komsomolets» in 1993 and 1994. StrålevernRapport 1995:7. Østerås: Norwegian Radiation Protection Authority, 1995. (In Norwegian)

Leonard et al. 1999

Leonard KS, McCubbin D, Blowers P, Taylor BR. Dissolved plutonium and americium in surface waters of the Irish Sea, 1973-1996. Journal of Environmental Radioactivity 1999; 44: 129-158.

NRPA, 2003.

NRPA. Radioactivity in the marine environment 2000 and 2001. Results from the Norwegian National Monitoring Programme (RAME). StrålevernRapport 2003:08. Østerås: Norwegian Radiation Protection Authority, 2003. <http://www.nrpa.no/dav/d3dbdc6d83.pdf> (17.12.09)

NRPA, 2004.

NRPA. Radioactivity in the marine environment 2002. Results from the Norwegian National Monitoring Programme (RAME). StrålevernRapport 2004:10. Østerås: Norwegian Radiation Protection Authority, 2004. http://www.nrpa.no/archive/Internett/Publikasjoner/Stralevernrapport/2004/StralevernRapport_10_2004.pdf (17.12.08)

NRPA, 2005

NRPA. Radioactivity in the marine environment 2003. Results from the Norwegian National Monitoring Programme (RAME). StrålevernRapport 2005:20. Østerås: Norwegian Radiation Protection Authority, 2005.

http://www.nrpa.no/archive/Internett/Publikasjoner/Stralevernrapport/2005/StralevernRapport_20_2005.pdf (17.12.08)

NRPA, 2006.

NRPA. Radioactivity in the marine environment 2004. Results from the Norwegian National Monitoring Programme (RAME). StrålevernRapport 2006:14. Østerås: Norwegian Radiation Protection Authority, 2006.

http://www.nrpa.no/archive/Internett/Publikasjoner/Stralevernrapport/2006/StralevernRapport_14_2006.pdf (17.12.08)

NRPA, 2007.

NRPA. Radioactivity in the marine environment 2005. Results from the Norwegian National Monitoring Programme (RAME). StrålevernRapport 2007:10. Østerås: Norwegian Radiation Protection Authority, 2007.

http://www.nrpa.no/archive/Internett/Publikasjoner/Stralevernrapport/2007/StralevernRapport_10_2007.pdf (17.12.08)

NRPA, 2008.

NRPA. Radioactivity in the marine environment 2006. Results from the Norwegian National Monitoring Programme (RAME). StrålevernRapport 2008:14. Østerås: Norwegian Radiation Protection Authority, 2008.

http://www.nrpa.no/archive/Internett/Publikasjoner/Stralevernrapport/2008/StralevernRapport_14-2008.pdf

OLF, 2008

Oljeindustriens Landsforening, OLF. Miljørapport 2007. Stavanger: OLF, 2008. Utslippsdata fra de enkelte innledningene på norsk sokkel:

<http://www.olf.no/miljoerapporter/olf-miljoerapport-2007-article1959-247.html> (05.05.09).

OSPAR, 2009

OSPAR Commission. Liquid discharges from nuclear installations in 2007. Radioactive

substances series, Publication number 456/2009. London: OSPAR, 2008.
http://www.ospar.org/documents%5Cdbase%5Cpublications%5Cp00456_Liquid%20Discharges%20data%20report%202007.pdf (17.12.09)

Roos et al. 1994
Roos P, Holm E, Persson RBR. Comparison of AMP precipitate method and impregnated Cu₂[Fe(CN)₆] filters for the determination of radiocesium concentrations in natural waters. Nuclear Instruments and Methods in Physics Research A 1994; 339: 282-286.

Rudjord et al. 2001
Rudjord AL, Føyn L, Brungot AL, Kolstad AK, Helldal HE, Brown J, Iosjpe M, Christensen G. Radioactivity in the marine environment 1999. StrålevernRapport 2001:9. Østerås: Norwegian Radiation Protection Authority, 2001.
http://www.nrpa.no/archive/Internett/Publikasjoner/Stralevernrapport/2001/StralevernRapport_9_2001.pdf (17.12.08)

Smith et al. 1998
Smith DL, Knowles JF, Winpenny K. The accumulation, retention and distribution of ^{95m}Tc in crab (*Cancer pagurus* L) and lobster (*Homarus gammarus* L). A comparative study. Journal of Environmental Radioactivity 1998; 40: 113-135.

Smith et al. 2001
Smith V, Fegan M, Pollard D, Long S, Hayden E, Ryan P. Technetium-99 in the Irish marine environment. Journal of Environmental Radioactivity 2001; 56: 269-284.

Strand, 1998
Strand P, Balonov M, Aarkrog A, Bewers MJ, Howard B, Salo A, Tsaturov YS. Radioactivity. In: AMAP assessment report: Arctic pollution issues, Chapter 8. Oslo: Arctic Monitoring and Assessment Programme, AMAP 1998: 525-620.

Swift, 1985
Swift DJ. The accumulation of ^{95m}Tc from sea water by juvenile lobsters (*Homarus gammarus*). Journal of Environmental Radioactivity 1985; 2: 229-243.

UNSCEAR (2000a)

UNSCEAR. United Nations Scientific Committee on the Effects on Atomic Radiation. Sources and effects of ionizing radiation: United Nations report to the general assembly, with scientific annexes. Volume I: Sources. New York: United Nations, 2000.
http://www.unscear.org/unscear/en/publications/2000_1.html (17.12.08)

UNSCEAR (2000b)
UNSCEAR. United Nations Scientific Committee on the Effects on Atomic Radiation, Sources and effects of ionizing radiation: United Nations report to the general assembly, with scientific annexes. Volume II: Effects. New York: United Nations, 2000.
http://www.unscear.org/unscear/en/publications/2000_2.html (17.12.08)

Vakulovsky et al. 1995
Vakulovsky SM, Kryshsev II, Nikitin AI. Radioactive contamination of the Yenisei River. Journal of Environmental Radioactivity 1995; 29: 225-236.

Varskog et al. 1997
Varskog P, Bjerck TO, Ruud AB. Ph-control EDTA titration as an alternative method for the determination of the chemical yield of yttrium in ⁹⁰Sr analysis. In: Rapid radioactivity measurements in emergency and routine situations. Teddington: National Physical Laboratory, NPL, 1997: 237-241.

Zalewska and Saniewski, 2009
Zalewska T, Saniewski M. ¹³⁷Cs and ⁹⁰Sr activities in seawater in 2008 the southern Baltic region. Gdynia: Institute of Meteorology and Water Management, Maritime Branch, 2009.
http://meeting.helcom.fi/c/document_library/get_file?p_l_id=19548&folderId=457982&name=DLFE-37745.pdf (09.09.09)

Appendix

Analytical methods

During recent years, laboratories at the Norwegian Radiation Protection Authority, and the Institute of Marine Research have both been accredited according to the requirements of NS-EN ISO/IEC 17025. Laboratories and organisations that are not named here have not been accredited according to the requirements of NS-EN ISO/IEC 17025. The scope and conditions governing the accreditation of the institutes mentioned above are quite different, but they have all been accredited for gamma spectrometric measurements. For example, the NRPA is accredited for gamma spectrometric measurements in the energy interval 100-1800 keV (except ^{226}Ra), while the other organisations are accredited for gamma spectrometric measurements of ^{137}Cs . The analytical techniques employed at each institution are described below. The results in this report are not claimed to be accredited results as not all results are accredited.

The Norwegian Radiation Protection Authority (NRPA)

NRPA analyses alpha, beta and gamma emitters, using the procedures described in this Appendix.

Determination of ^{99}Tc activity

To determine the activity concentration of ^{99}Tc in seawater, samples of 50 litres were filtered through a 1-micron polypropylene cartridge to remove suspended particulate matter. Seaweed and other biota samples were dried, milled and homogenized. A 10-20 g dried sample was transferred to a specially designed bottle and carbonised and then dissolved by adding concentrated H_2SO_4 followed by HNO_3 . $^{99\text{m}}\text{Tc}$ was added to all samples for chemical recovery determination.

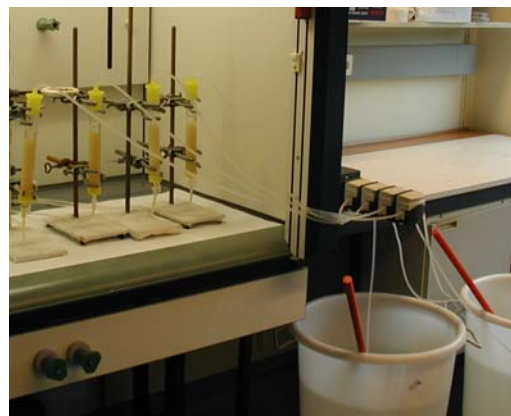


Figure A.1. Fifty litres of seawater is passed through an ion-exchange column.

The analytical procedure used is a modified version of that developed by Risø National Laboratory, Denmark (Chen *et al.*, 2001). The procedure is outlined briefly below. Technetium is initially separated from the matrix by ion-exchange chromatography using a BIO-RAD AG1-X4 (100-200 mesh) column (Figure A.1) and separation techniques such as precipitation and solvent extraction are then applied before the technetium is electro-deposited onto stainless steel discs (Figure A.2). The chemical yields were determined by gamma counting of the $^{99\text{m}}\text{Tc}$ tracer in a NaI well-type detector. Typically, the radio-chemical yields varied between 70 % and 85 %. After one week, the ^{99}Tc activity was measured using a low-background anti-coincidence beta counter (Model Risø GM-25-5).



Figure A.2. Dried sample material in different containers ready for gamma measurements. To the right, ^{99}Tc preparations ready for counting.

The limits of detection for 10 g seaweed and 50 l seawater have been calculated to be approximately 0.5 Bq kg^{-1} (d.w.) and 0.10 Bq m^{-3} , respectively. The limit of detection may vary slightly owing to variations in chemical

yield, counting efficiency and the mass of the sample. The total uncertainty in ^{99}Tc analysis is normally around 10 %.

Detection of gamma emitters

At NRPA analyses of gamma-emitting nuclides are performed with HPGe detectors. All the detectors are situated in a low-background laboratory to ensure low detection limits. The HPGe detectors have relative efficiencies in the range of 23 % to 40 %. The resolution of the detectors, the full width at half maximum (FWHM) at 1332 keV, was less than 1.9 keV. Three of the detectors cover the energy interval 50-2000 keV, and two cover the interval 20-2000 keV.

Caesium-absorbing filters (sometimes also the prefilter) from the filtering system for seawater samples were dried separately at 105°C and ashed at 450°C before the activity was determined with an HPGe detector. The counting time varied from 1 to 4 days.

Samples of seaweed were dried at 105°C and homogenized, and placed in containers prior to gamma counting. Sediment samples were freeze-dried and placed in containers prior to gamma counting. Samples were counted for a minimum of 2 days. At NRPA, the detection limits for ^{137}Cs and ^{134}Cs in the sediment samples ranged from approximately 0.3-2 Bq kg^{-1} (d.w.) Uncertainties in the analysis include uncertainties from counting statistics, calibration and sample preparation and are normally in the range 5% to 20%.

The Institute of Marine Research (IMR)

Detection of gamma emitters

Sediment samples were transported deep-frozen to IMR, where they were subsequently ground, freeze-dried, homogenized and transferred to polyethylene containers of appropriate size prior to analysis. The gamma counting for ^{137}Cs detection was performed in IMR's low-background laboratory using a HPGe detector with 30 % relative efficiency and an HPGe detector with 60 % relative efficiency. Both detectors have electric

cryostat cooling systems, and 10 cm lead shielding.

Determination of ^{99}Tc

Before the activity concentration of ^{99}Tc can be determined, a radiochemical separation is necessary. Briefly, rhenium is added as a yield monitor in the form of KReO_4 , and a preliminary extraction of ^{99}Tc (and Re) based on anion-exchange separation is performed. After iron hydroxide scavenging, ^{99}Tc and Re are further extracted by a second anion-exchange and subsequent sulphide precipitation. Finally, their tetraphenyl arsonium salts are isolated. ^{99}Tc is beta-counted using a low-background anti-coincidence beta counter (Model Risø GM-25-5), and the yield of the rhenium tetraphenyl arsonium salt is determined gravimetrically. See Harvey *et al.* (1992) for a detailed description of the method.

Institute for Energy Technology (IFE)

Determination of ^{99}Tc

Samples of dried and homogenized *Fucus vesiculosus* were analysed with regard to ^{99}Tc content. The pretreatment was performed at Kjeller and the analysis at the Department of Radiation Physics, at Lund University. The following analytical procedure was used at the Department of Radiation Physics at Lund University, Sweden. Technetium was extracted into tri-butyl-phosphate (TBP) from sulphuric acid-hydrogen fluoride solution. Technetium was then back-extracted from the organic phase with a sodium hydroxide solution from which the technetium was electrodeposited onto stainless steel discs, and $^{99\text{m}}\text{Tc}$ was used as a radiochemical yield determinant. After decay of the yield determinant, ^{99}Tc was measured with an anti-coincidence-shielded GM counter (Holm *et al.*, 1984).

Determination of ^{90}Sr

For ^{90}Sr , the standard method using fuming nitric acid was used. The recovery of ^{90}Sr in the analytical process was monitored by adding ^{85}Sr as a yield determinant, and the recovery of the daughter nuclide ^{90}Y was determined by titration with EDTA (Varskog *et al.*, 1997). Finally, ^{90}Y was measured with an anti-coincidence-shielded GM counter.

Detection of gamma emitters

At IFE analyses of gamma-emitting nuclides are performed with low-background HPGe detectors. Samples of seaweed were dried at 105°C and then homogenized, and placed in suitable containers prior to gamma counting.

Determination of $^{239+240}\text{Pu}$

Samples of dried and homogenized *Fucus vesiculosus* were ashed and treated with *aqua regia* before separation of plutonium isotopes. ^{242}Pu was used as a tracer for radiochemical yield determination. The separation process involved solvent extraction with 10 % TIOA/Xylene followed by anion exchange on AG1-X4 columns. The plutonium fraction was then electrodeposited on a stainless steel disc and counted using alpha spectrometry.



Statens strålevern
Norwegian Radiation Protection Authority

StrålevernRapport 2009:1

Virksomhetsplan 2009

StrålevernRapport 2009:2

Røntgendiagnostikk blant norske tannleger

StrålevernRapport 2009:3

Analyse av variasjon i representative doser ved CT-undersøkelser

StrålevernRapport 2009:4

Årsrapport fra persondosimetritjenesten ved Statens strålevern 2007

StrålevernRapport 2009:5

Teknisk kvalitetskontroll - konstanterkontroller for digitale mammografisystemer

StrålevernRapport 2009:6

Konsekvenser for Norge ved en tenkt ulykke ved Sellafield-anlegget

StrålevernRapport 2009:7

Consequences in Norway of a hypothetical accident at Sellafield (Electronic version only)

StrålevernRapport 2009:8

Efaringbasert kunnskap i norsk atomberedskap – medvirkning fra berørte parter

StrålevernRapport 2009:9

Radiokromisk film for karakterisering av strålefelt (Kun elektronisk versjon)

StrålevernRapport 2009:10

Dosimetrikontroll med radiokromisk film

StrålevernRapport 2009:11

Ny barriere mot spredning av atomvåpen?

StrålevernRapport 2009:12

Rekvirering av høyenergetisk stråleterapi

StrålevernRapport 2009:13

Risk and environmental impact assessments for the decommissioning of radioisotope thermoelectric generators (RTGs) in Northwest Russia

StrålevernRapport 2009:14

Overvåking av radioaktivitet i omgivelsene 2007

StrålevernRapport 2009:15

Radioactivity in the Marine Environment 2007