

Radiologisk konsekvensanalyse ved utslipp av radionuklider fra IFE

Task 2: Impact Assessment to the public discharges - NUK

*Valls, A., Fraile, E., Abada, M., Plachciak, M., Jordana,
S., Abarca, E., Grandia, F. García, D.*

(Amphos 21 Consulting S.L.)



March 2023

Task Report, NUK

Version 1

◆ 3571_DA-Kjeller_A21_PR_T2_NUK_v1 ◆

In bibliography, this report will be cited as follows:

Valls, A., Fraile, E., Abada, M., Plachciak, M., Jordana, S., Abarca, E., Grandia, F. García, D. (2023) Radiologisk konsekvensanalyse ved utslipp av radionuklider fra IFE - Task 2: Impact Assessment to the public discharges - NUK. Report code: 3571_DA-Kjeller_A21_PR_T2_NUK_v1

Amphos 21 Consulting S.L.

C. Veneçuela, 103, 08019 Barcelona (Spain)

+34 935 830 500

www.amphos21.com

Prepared by

Collective

Reviewed by



David Garcia

Validated by



Lara Duro

Index

1	Introduction	10
1.1	Objectives	10
2	Methodology	11
3	System Description	13
4	Conceptual model	14
4.1	Physical model.....	14
4.1.1	Atmospheric system.....	14
4.1.2	Surface water system.....	16
4.2	Dose model.....	18
4.2.1	Atmospheric system.....	18
4.2.2	Surface water system.....	19
5	Mathematical Model.....	20
5.1	Physical Model.....	21
5.1.1	Source Term	21
5.1.2	Transferences	29
5.1.3	Compartment concentration	34
5.2	Dose Model.....	34
6	Results	40
6.1	Continuous atmospheric emission	41
6.2	Total acute atmospheric emission.....	43
6.3	Liquid discharges.....	46
7	Conclusions	49
	References.....	51

A. Parameters	54
A.1 Physical model.....	54
A.1.1 Non-radionuclide dependent data.....	54
A.1.2 Radionuclide dependent data.....	55
A.2 Dose Model.....	58
A.2.1 Non-radionuclide dependent data.....	58
A.2.2 Radionuclide dependent data.....	59
B. Environmental Results Data	69
B.1 Continuous atmospheric emission	69
B.2 Total acute atmospheric emission	72
B.3 Liquid discharges	74
C. Dose Results, Additional Data	79
C.1 Preliminary Dose Assessment	79
C.2 Atmospheric dispersion model	82
C.3 Dose Assessment.....	85
C.3.1 Continuous atmospheric emission.....	86
C.3.2 Total acute atmospheric emission	90
C.3.3 Liquid discharges	94

List of Tables

Table 5-1. List of radionuclides emitted to the atmosphere by each division.....	22
Table 5-2. Radionuclides selected for the atmospheric emission dose assessment and the discharge rate to be assessed (Bq/y).....	23
Table 5-3. List of radionuclides discharged to the Nitelva river by each division.	28
Table 5-4. Radionuclides selected for the liquid discharge dose assessment and the discharge rate to be assessed (Bq/y).	29
Table A. 1. Non-radionuclide nor compartment dependent data for physical model.....	54
Table A. 2. Compartment dependent data for physical model.....	54
Table A. 3. Diffusion coefficient for radionuclide I in free solution (D_i , m^2/y).....	55
Table A. 4. Distribution coefficient for radionuclide i in suspended solids ($K_{d_{ss}}$, m^3/kg_{DW})....	56
Table A. 5. Distribution coefficients for radionuclide i in soils and sediments (K_d , m^3/kg_{DW}). 56	
Table A. 6. General, non-radionuclide dependent data for the dose model.....	58
Table A. 7. Age-group dependent data for dose model.....	58
Table A. 8. Dose coefficient for inhalation for radionuclide i for each age group (DC_{inh} , Sv/Bq).	59
Table A. 9. Dose coefficient for ingestion for radionuclide i for each age group (DC_{ing} , Sv/Bq).	60
Table A. 10. Dose coefficient for air submersion for radionuclide i for each age group ($DC_{im,a}$, Sv/s per Bq/m^3).....	62
Table A. 11. Dose coefficient for water immersion for radionuclide i for each age group ($DC_{im,w}$, Sv/s per Bq/m^3).....	63
Table A. 12. Dose coefficient for exposure to ground deposits for radionuclide i for each age group (DC_{Ext} , Sv/s per Bq/m^3).	65
Table A. 13. Concentration factor for uptake of the radionuclide from soil by edible parts of crops for radionuclide i (F_v , Bq/kg plant tissue per Bq/kg dry soil) and equilibrium ratio of	

the concentration of radionuclide *i* in fish to its dissolved concentration in water, known as the bioaccumulation factor ($B_{fish, i}$, (Bq/kg)/(Bq/L)). 67

Table B. 1. Mean concentration values in top soil compartment for the first and last simulation year. 70

Table B. 2. Mean concentration values in top soil compartment for the first and last simulation year. 72

Table B. 3. Mean aqueous concentration (Bq/m³) values in different compartments for the first and last simulation year. 74

Table B. 4. Mean aqueous concentration (Bq/m³) in river compartments for the first and last simulation year. 76

Table B. 5. Mean sorbed concentration (Bq/kg) values in different compartments for the first and last simulation year. 77

Table C. 1. IRAT results of isotope contribution to dose received from atmosphere. Isotopes highlighted in bold are those selected for the final assessment. 79

Table C. 2. IRAT results of isotope contribution to dose received from surface water based on angling family. Isotopes highlighted in bold are those selected for the final assessment. 80

Table C. 3. IRAT Results of isotope contribution to dose received from irrigated food. Isotopes highlighted in bold are those selected for the final assessment. 81

Table C. 4. Maximum atmospheric concentration (Bq/m³) over croplands area. A monthly value is provided for the continuous release, and a single value for the total acute release. . 82

Table C. 5. Maximum atmospheric concentration (Bq/m³) over residential area. A monthly value is provided for the continuous release, and a single value for the total acute release. 84

Table C. 6. Total dose received per pathway and isotope during the last simulation year for infants. 86

Table C. 7. Total dose received per pathway and isotope during the last simulation year for children. 87

Table C. 8. Total dose received per pathway and isotope during the last simulation year for adults..... 88

Table C. 9. Total dose received per pathway and isotope during the last simulation year for infants..... 90

Table C. 10. Total dose received per pathway and isotope during the last simulation year for children..... 91

Table C. 11. Total dose received per pathway and isotope during the last simulation year for adult. 92

Table C. 12. Total dose received per pathway and isotope during the last simulation year for infants..... 94

Table C. 13. Total dose received per pathway and isotope during the last simulation year for children..... 95

Table C. 14. Total dose received per pathway and isotope during the last simulation year for adults..... 96

List of Figures

Figure 2-1. Scheme of the project methodology.	12
Figure 4-1. Selected areas for the atmospheric model.....	15
Figure 4-2. Conceptual model for the atmospheric emissions.....	16
Figure 4-3. Selected areas for the surface water model.....	17
Figure 4-4. Conceptual model of the radionuclide model for the liquid discharge.....	18
Figure 4-5. Exposure pathway model showing the relationship between pathways and the relevant compartments for the estimation of the dose to public in the atmospheric system.	19
Figure 4-6. Exposure pathway model showing the relationship between pathways and the relevant compartments for the estimation of the dose to public in the surface water system.	20
Figure 5-1. Gas emission point locations per each division.	22
Figure 5-2. AERMOD model domain.	25
Figure 5-3. Wind rose for 2021 (data processed from Kjeller SN4200 [6]).	25
Figure 5-4. Selected sources of emission introduced into AERMOD.	26
Figure 5-5. Receptor points and emission sources of each division introduced into AERMOD.	26
Figure 5-6. Location of the NALFA pipeline, discharge point of the liquid wastes from the IFE-Kjeller facilities.....	28
Figure 6-1. Evolution of total dose rate with time for each exposed age group under the continuous atmospheric emission scenario.....	41
Figure 6-2. Evolution of the total annual dose with time for each exposed age group under the continuous atmospheric emission scenario.....	42
Figure 6-3. Contribution of exposure pathways (left) and isotope (right) contribution to the total annual dose under the continuous atmospheric emission scenario.....	42

Figure 6-4. Sr-90 concentration in crops (total, back line) and the concentration due to the isotope interception via de atmospheric deposition (blue line) and the uptake via the roots from the soil (orange line). 43

Figure 6-5. Evolution of total dose rate with time for each exposed age group under the total acute atmospheric emission scenario. 44

Figure 6-6. Evolution of the total annual dose with time for each exposed age group under the total acute atmospheric emission scenario. 45

Figure 6-7. Contribution of exposure pathways (left) and isotope (right) contribution to the total annual dose under the total acute atmospheric emission scenario. 45

Figure 6-8. Evolution of the total annual dose with time for each exposed age group under the liquid discharges scenario..... 46

Figure 6-9. Evolution of the total annual dose with time for each exposed age group under the liquid discharges scenario..... 47

Figure 6-10. Ra-228 concentration in crops (total, back line) and the concentration due to the isotope interception via de atmospheric deposition (blue line) and the uptake via the roots from the soil (orange line). 47

Figure 6-11. Contribution of exposure pathways (left) and isotope (right) contribution to the total annual dose under the liquid discharges scenario..... 48

Figure 7-1. Dose received during the last year of operation (year 60) as a function of the reference group and the discharge scenario..... 49

Figure B. 1. Evolution of the concentration sorbed in the soils during the operational period under the continuous atmospheric emission scenario..... 69

Figure B. 2. Evolution of the sorbed concentration of caesium isotopes in the soils during the operational period under the continuous atmospheric emission scenario..... 70

Figure B. 3. Evolution of the concentration sorbed in the soils during the operational period under the continuous atmospheric emission scenario..... 72

Figure B. 4. Evolution of the concentration sorbed in the soils (left) and sediments (right) during the operational period under the continuous atmospheric emission scenario..... 74

1 Introduction

The Institute for Energy Technology (IFE) is an independent research foundation, established by the government of Norway in 1948, with approx. 1 billion NOK annual turnover and around 600 employees [1]. When founded, IFE's main goal was nuclear research, but currently IFE is one of the leaders in petroleum, environmental and nuclear technology as well as energy research and safety. Throughout the years IFE has been devoted to many projects aiming at the development of smart and environment-friendly industrial processes and transport solutions as well as the pharmaceutical and renewable energy sectors.

IFE is organized in three divisions, each of them further divided into sectors and departments.

- Nuclear Technology (NUK)
- Radiopharmacy (Agilera)
- Research and Development (R&D) (FoU)

As previously explained in Task 1, IFE holds a permit for liquid and atmospheric discharges from the facilities, issued pursuant to the Act of 13 March 1981 No.6 Protection Concerning Against Pollution and Waste [2]. This permit allows, among other things, for the receiving, treatment and intermediate storage of radioactive waste and provides authorisation for radioactive discharges to air and water from the operations.

The split of IFE into three independent divisions requires a new regulatory permit for liquid and atmospheric discharges to the environment during normal operations for each of them. IFE has been required by the DSA (Norwegian Radiation and Nuclear Safety Authority) to perform a new environmental risk assessment including all relevant substances IFE has permission or requests permission to release.

1.1 Objectives

The objective of this project is to perform an environmental impact assessment of the future discharge of radioactive substances from IFE Kjeller, both to human and non-human biota.

The environmental impact assessment will be conducted for each of the IFE divisions: NUK, Agilera and FoU, which are Nuclear Technology, Radiopharmacy and Research & Development respectively, following the same base conceptual model in all cases.

The project is divided into four tasks:

- Task 1: Preliminary model definition and parametrization
- Task 2: Impact assessment to the public
- Task 3: Impact assessment to non-human biota
- Task 4: Training of Ecolego and ERICA to IFE

Task 1 was delivered in November 2022 [3]. The task 1 report aimed at presenting and defining the model. Main compartments of the system were identified, as well as the main processes and transferences of radionuclides between compartments. It also included a description of the dose model by identifying the reference group and the main exposure pathways.

This document reports the work carried out in the frame of Task 2 for the NUK division. The end goal of this task is to calculate the radiological impact to the public. After describing the methodology in the following section (Section 2), both the system and the conceptual model are presented (Section 3 and Section 4, respectively). Section 5 is focused on explaining the mathematical models where both the formulation and parametrization of all values are included. Lastly, the dose assessment results are presented in Section 6.

One report is prepared per division where Sections 1 to Section 5 and Appendix A are exactly the same and the information related with the results of the radiological impact assessment are specific of the division (Section 6, Section 7 and Appendix C).

It is worth mentioning that all information presented in Task 1 will not be repeated in the current report, but a summary will be provided. Some assumptions have changed from Task 1 report. In those cases, new information is included in this report. In case of discrepancies between Task 1 and Task 2 reports, note that the valid formulation, parametrization and assumptions are those in Task 2 report.

2 Methodology

The methodology that was followed to perform the dose assessment both to human and non-human biota is presented in Figure 2-1. The first step to estimate the dose is to prepare and develop the model, including the following activities:

- (i) System definition: general description of the environment close to the IFE Facility, studied area, discharges to the environment and reference group to which the dose is assessed.

- (ii) Conceptual model: description of the conceptual model which includes definition of the system compartments, processes affecting the transport of radionuclides in the environment and exposure pathways.
- (iii) Mathematical model: formulation and parametrization of the compartments, processes, transferences, concentration in the environment, exposure pathways and dose. The mathematical model includes the definition of the radionuclide list and the release conditions that will be implemented in the model.

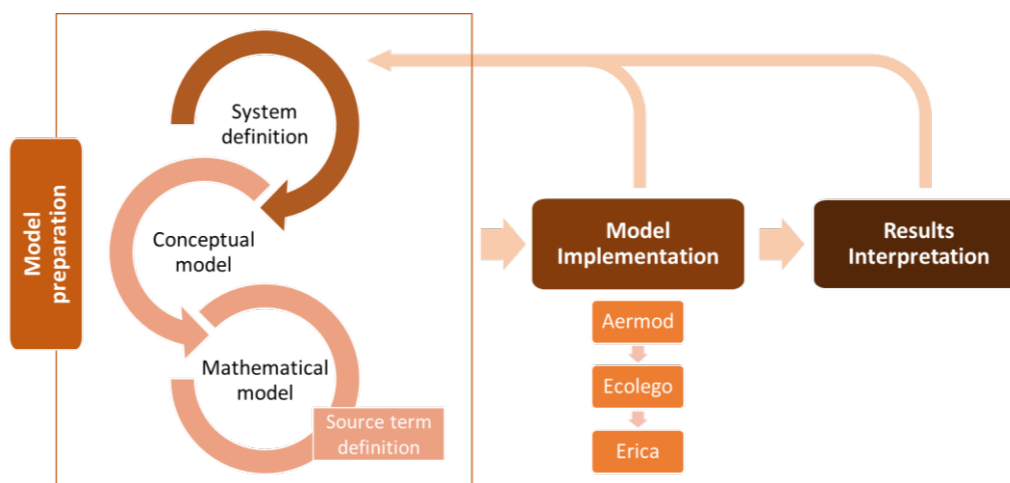


Figure 2-1. Scheme of the project methodology.

Once the model is conceptualized and mathematically described, the second step is to implement the model in the corresponding software. Different software is used to develop different types of calculations. In this work, the atmospheric concentration of each isotope due to atmospheric emissions is estimated using AERMOD. Both radionuclide transport and dose to humans are calculated with Ecolego, which is fed with the atmospheric radionuclide concentrations from AERMOD. Erica is used to calculate the dose to non-human biota taking into account the isotopic concentration in the environment provided by Ecolego.

This report is only focused on the dose assessment to humans, entailing that, neither information related to the conceptualization, mathematical formulation, or implementation of the non-human biota models nor the results obtained from Erica are provided in this document. See the report of Task 3 for all the details [4].

Finally, results obtained are treated and an evaluation on the main exposure pathways and isotopes contributing to the dose is discussed.

3 System Description

To evaluate the dose impact to humans due to the atmospheric and liquid discharges of IFE Kjeller facilities to the environment it is important to take into account the following:

- There are three different divisions: NUK, Agilera and FoU.
- The existence of two main sources of emission to the environment: the emission of gases to the atmosphere and the discharge of radionuclides in liquid form to the Nitelva river.

On one hand, each division requires its own dose assessment considering the radionuclides that are emitted from each division. The conceptual model will be the same but modifying the source term (radionuclides emitted and release rate).

On the other hand, each division is responsible for the release of radionuclides into the environment through either gas emissions to the atmosphere or liquid discharges to the Nitelva river. Each division contributes to the air emissions through the release of radionuclides in gas or aerosol form via chimneys located in different buildings at the IFE-Kjeller site (see Figure 5-1) Agilera and FoU do not discharge any radionuclides directly into the river but transfer their emissions to NUK, from where radionuclides are released to the Nitelva river via the NALFA pipeline (see Figure 5-6).

The studied system is defined considering the area close to the IFE-Kjeller facilities that could potentially be affected by the atmospheric and liquid discharges. In the case of atmospheric discharges, considering the orography and the meteorological conditions, the area close to the facilities could be affected, without reaching the area of the river. The liquid discharges to the Nitelva river through the pipeline will potentially affect the area downstream both in the rivers and the agricultural areas nearby. A detailed description of both systems was presented in Task 1 [3] and is summarized in Section 4 of this report.

The reference group selection is based on the behaviour of the population living in the area of Lillestrøm and is described in Section 4.2 and 5.2. Note that there are some changes in the assumptions with respect to Taks 1 report.

A radiological impact assessment is performed for each release pathway to the environment (atmospheric and liquid discharges) as there is no connection between the two physical systems (see next section for details). This means that there is no significant transport of radionuclides released to the atmosphere reaching the river nor the areas affected by the river, and vice versa, the radionuclides released to the river are not transported to the areas affected by the atmospheric emissions.

In addition, it should be noted that two different release scenarios are considered in the case of the atmospheric discharges: (i) continuous release and (ii) total acute release. In the case of the liquid discharges, one scenario is considered taking into account the current discharge periodicity. A total acute release is not considered as it is considered as less likely due to the physical restrictions. Therefore, three different dose assessments to the public are performed for each of the divisions (i.e., continuous atmospheric emissions, total acute atmospheric emissions and liquid discharges to the Nitelva river). As these assessments are conducted per division, 9 different environmental impact assessments based on the same conceptual models are developed in this project.

4 Conceptual model

The conceptual model has been described in detail in Task 1 of this project [3]. This section provides a summary of the conceptual model for better comprehension of the subsequent sections. Two different conceptual models have been described: one for the atmospheric emissions and one for the liquid discharge to the Nitelva river. No distinction on the conceptual model is made between the continuous and total acute release to the atmosphere apart from the release rate. In addition, a distinction has been made between the physical and the dose models.

The list of nuclides to be considered differs in each case and it depends on both the division and the type of release. For each case, a preliminary dose assessment was performed to estimate the main nuclides contributing to dose (using the 'Initial Radiological Assessment Tool', IRAT [5]). These isotopes are implemented in Ecolego, and their decay products were selected to be included in the dose assessment. A detailed explanation of the selected nuclides and the discharge rates considered is provided in Section 5.

4.1 Physical model

The physical model is the part of the model that describes the physical system, meaning that this is where the compartments of the environment and the radionuclide transport and processes are defined.

4.1.1 Atmospheric system

The atmospheric model considers that radionuclides released to the atmosphere are dispersed to agricultural and residential areas located a few hundred meters away from the IFE-Kjeller facilities (see selected area in Figure 4-1).



Figure 4-1. Selected areas for the atmospheric model.

As shown in Figure 4-2, radionuclides are then deposited onto the croplands area. The croplands are considered to consist of two layers: top soil and deep soil between which radionuclides can be transferred via different mechanisms:

- Bioturbation, which refers to the physical, chemical, and biological alteration of soil layers by living organisms.
- Advection, which refers to the transport of radionuclides by the flow of water.
- Diffusion, which refers to the movement of radionuclides from high concentration regions to lower ones.

Besides the abovementioned processes, the model also considers the decay of radionuclides and the sorption of radionuclides into the soil.

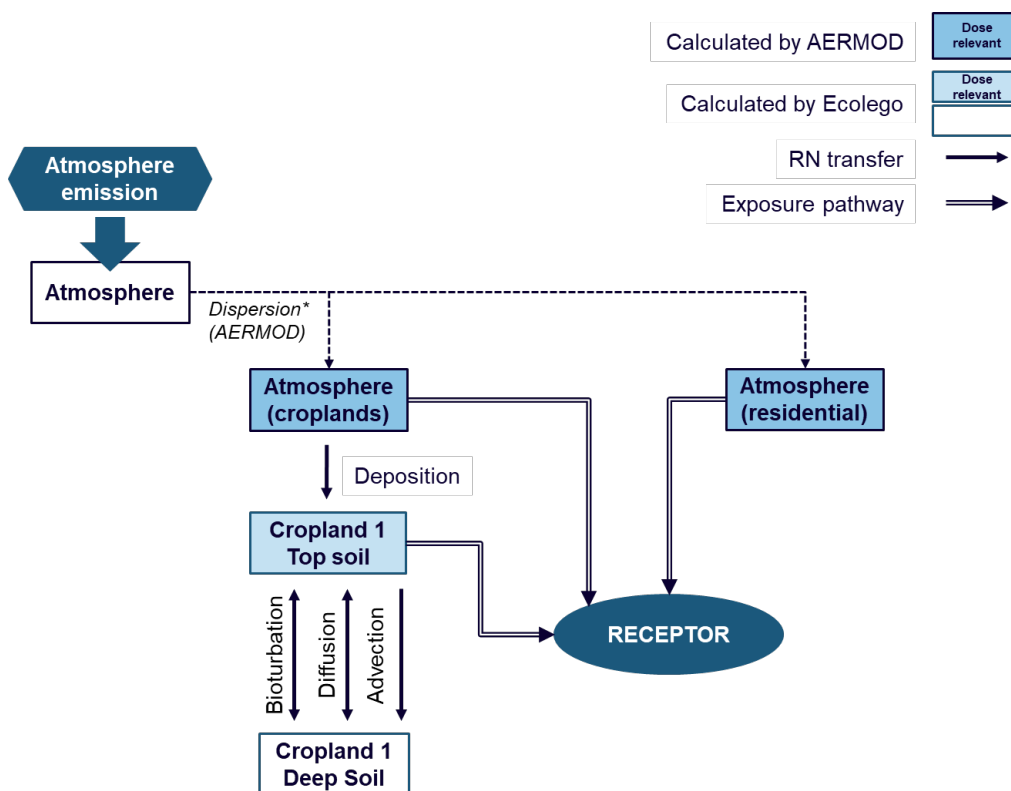


Figure 4-2. Conceptual model for the atmospheric emissions.

4.1.2 Surface water system

The surface water model considers the transport of radionuclides released to the environment via liquid discharges to the Nitelva river. The model includes the river shores and agricultural areas around the river, from which water is extracted to be used for the irrigation of the croplands. The section of the river modelled, and the selected cropland areas are presented in Figure 4-3.

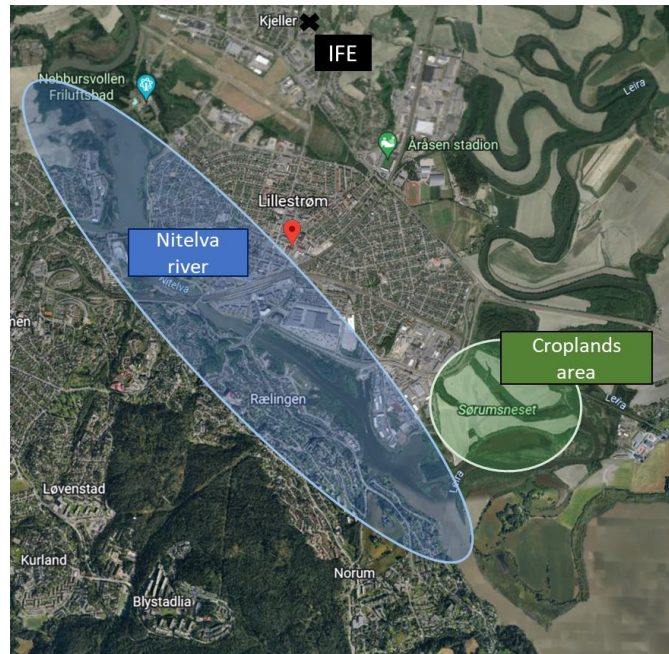


Figure 4-3. Selected areas for the surface water model.

As shown in Figure 4-4, the Nitelva river is divided into two compartments, which allows the model to calculate the decrease in radionuclide concentration in the areas further from the discharge point. A third river compartment, named “River downstream”, was added to account for the water flux leaving the studied system. The model considers the deposition of particulate matter on river sediments, which are divided into two compartments: top and deep sediment, due to the differing properties of the layers. Radionuclides can be transported between the river and the sediment compartments via the following mechanisms:

- Advection, accounting for the waterflow between river compartments.
- Sedimentation, considering the deposition of matter on sediments.
- Resuspension, taking into account the removal of the deposited matter from sediments.
- Diffusion, considering the effects of diffusivity due to the water content.

As mentioned before, the model considers irrigation of the croplands using water from Nitelva. Therefore, the croplands compartments were added to the surface water model, following the same reasoning and transport mechanisms as in the atmospheric model (see section 4.1.1).

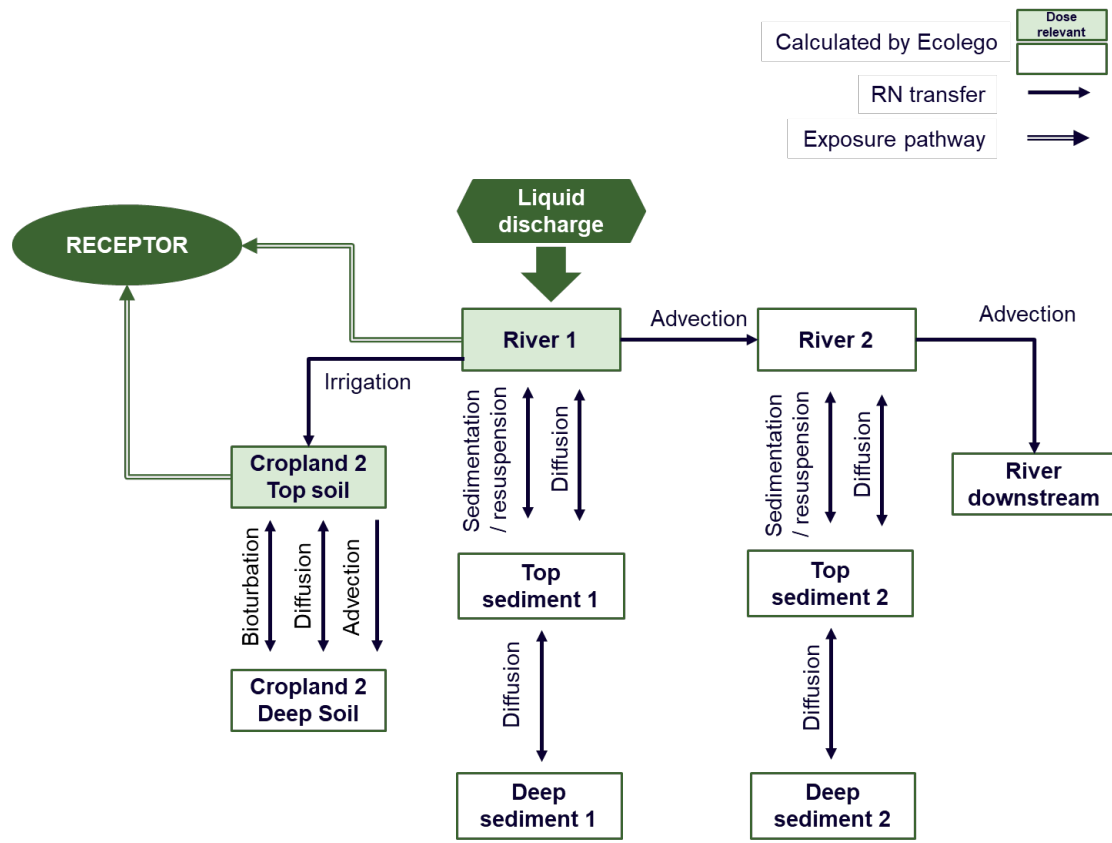


Figure 4-4. Conceptual model of the radionuclide model for the liquid discharge.

4.2 Dose model

The dose model is based on the potential behaviour of the most exposed group. Dose is estimated for an operation period of 60 years. Dose received by the reference group comes from their exposition to different pathways which differ as a function of the type of release (atmospheric emissions or liquid discharges).

The reference group is based on a farmer family living nearby the IFE-Kjeller plant. The dose is evaluated for three different age groups, which are 1 year old infants, 10-year-old children and adults. In the subsequent sections, the exposure pathways and the main assumptions considered for each age group are summarized.

4.2.1 Atmospheric system

The main exposure pathways considered in the atmospheric system are presented in Figure 4-5 and described below.

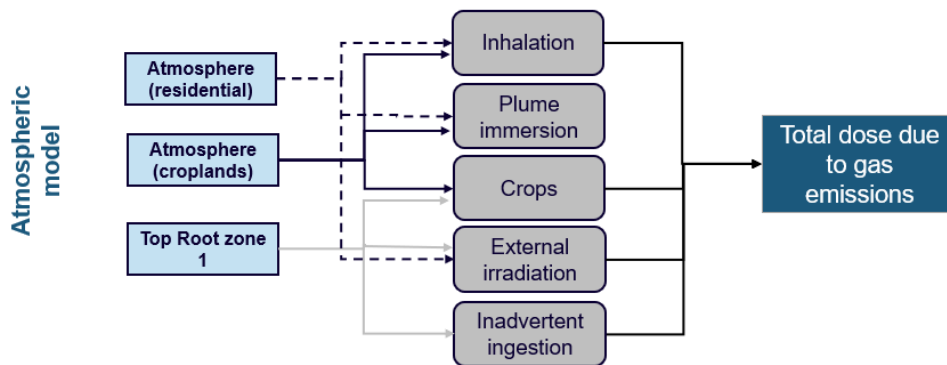


Figure 4-5. Exposure pathway model showing the relationship between pathways and the relevant compartments for the estimation of the dose to public in the atmospheric system.

Both the external irradiation due to the immersion in an atmospheric plume and the inhalation of radionuclides depend on the concentration of radionuclides in the air over the croplands and residential areas affected by the dispersion plume.

The ingestion of crops cultivated in the contaminated agricultural areas is also considered. The received dose depends on the radionuclide concentration in the crops. Radionuclides are intercepted by crops via the deposition from the atmosphere and via the uptake from the soil through roots.

Humans can also receive dose while spending time in the croplands area due to the external exposition to the contaminated soil and the inadvertent (i.e., accidental) ingestion of soil.

The dose will also depend on assumptions considered for the reference group:

- Adults spend 4 hours per day working in the cropland area, while infants and children spends 2 h per week playing in this area.
- Adults spend 6 hours per day in the residential area, while infants and children 8 hours per day.
- Crops consumed by the exposed groups, come solely from the affected cropland areas.

4.2.2 Surface water system

The exposure pathways considered in the surface water system are presented in Figure 4-6. It can be seen that some of the exposure pathways are the same as presented in the atmospheric model. These are the ones related with the exposure to the cropland area and the products cultivated there. Therefore, the same exposure pathways and assumptions are considered (see previous section). Only one difference exists between both cases:

radionuclides are intercepted by crops from the soil and from the irrigation with the contaminated water from the river (instead of from atmospheric deposition).

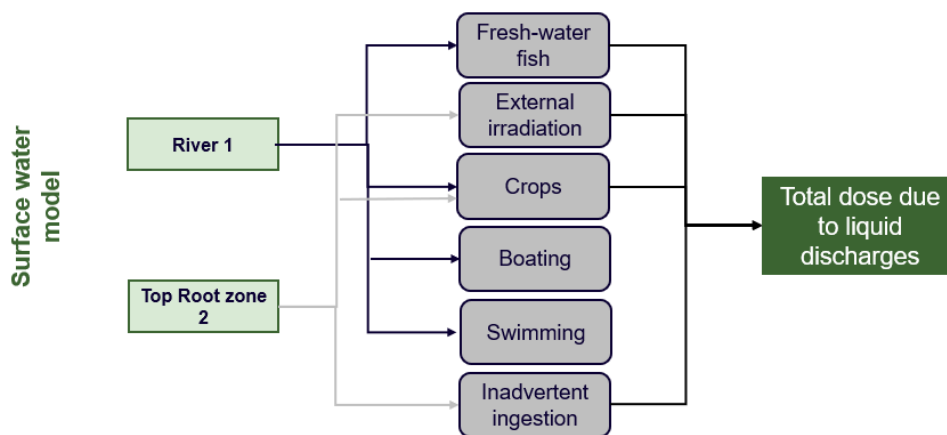


Figure 4-6. Exposure pathway model showing the relationship between pathways and the relevant compartments for the estimation of the dose to public in the surface water system.

In addition, humans can receive dose due to activities related with the river as the consumption of fresh fish, the external irradiation from boating in Niteva river and the external irradiation due to the swimming in Nitelva river. These last three pathways depend on the radionuclide concentration levels in the river water and the following assumptions.

- 1/10 of the fresh-fish consumption comes from Nitelva river.
- Adults spend 1 hour per month swimming in Nitelva river, while children and infants are considered not to swim.
- Adults, children and infants spend 2 hours per week doing boating activities in Nitelva river.

Note that the ingestion of radionuclides due to the inadvertent ingestion of water while swimming is considered negligible, and it is not implemented in the model.

5 Mathematical Model

This section describes the mathematical model, i.e., formulation and parametrization, implemented for the calculation of the concentration of radionuclides in the environment and the dose estimation to the public. The transport of radionuclides from source term, through the biosphere, to the final recipient has been implemented in the software Ecolego. Each model has been developed considering the following aspects:

- Radionuclides are assumed to be uniformly mixed in each compartment.
- A compartment is any specific part of the system being modelled (e.g., river).
- Each transfer is 'donor controlled', depending directly on the radionuclide amount present in the compartment from which RN is leaving.
- Radionuclide decay.

5.1 Physical Model

The physical model includes the characterization of the transport of all radionuclides emitted by IFE's facilities to the environment. That includes definition of the source term, characteristics of the defined compartments, description of the transferences between compartments and the radionuclides' concentrations in the environment.

The work presented here is a prospective assessment, i.e., a predictive assessment of the effects of future discharges at their proposed limits. The presence of radioactivity in the environment from natural sources, previous discharges from IFE facilities, and fall-out from nuclear accidents and atmospheric tests is not considered.

5.1.1 Source Term

Two main source terms are identified: (i) the emission of gases to the atmosphere and (ii) the discharge of radionuclides in liquid form to the Nitelva river through the NALFA pipeline. In addition, two different scenarios have been considered in the atmospheric releases, one of them being a continuous release to the atmosphere and the second one assuming a total acute release.

5.1.1.1 Atmospheric emissions

Atmospheric emissions include all radionuclides emitted to the atmosphere in gas or aerosol form through chimneys located in different buildings on the IFE-Kjeller site. Each IFE division has different emission points (Figure 5-1), and radionuclides released. Table 5-1 shows the list of the radionuclides emitted to the atmosphere by each of IFE's division.

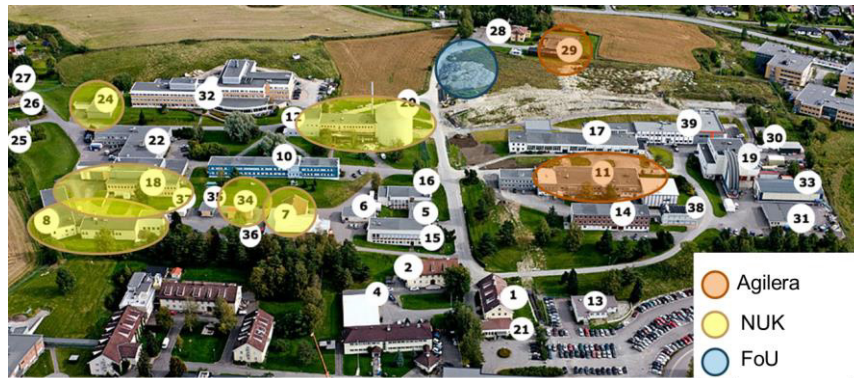


Figure 5-1. Gas emission point locations per each division.

Table 5-1. List of radionuclides emitted to the atmosphere by each division.

Radionuclide	NUK	Agilera	FoU	Radionuclide	NUK	Agilera	FoU
H-3	x		x	Eu-152	x		
C-14	x		x	Eu-154	x		
F-18		x		Eu-155	x		
Na-22	x		x	Gd-153	x		
Sc-46			x	Tb-160	x		
Co-60	x		x	Tb-161	x		x
Ni-59				Lu-177		x	
Ni-63	x			Hg-203	x		
Ni-69				At-211		x	
Zn-65	x		x	Pb-210	x		
Br-82	x			Pb-212		x	x
Kr-85	x			Rn-219		x	
Zr-89		x		Rn-220	x	x	x
Y-90		x		Rn-222	x		x
Sr-90	x			Ra-223		x	
Tc-99	x			Ra-224	x	x	x
Ru-106	x			Ra-226	x		
Ag-108m	x			Ra-228	x		x
Sn-113			x	Ac-225		x	
I-125		x		Ac-227	x	x	
I-129	x			Th-227		x	
I-131	x	x	x	Th-228	x	x	x

Radionuclide	NUK	Agilera	FoU	Radionuclide	NUK	Agilera	FoU
Ba-133	x		x	Th-230	x		
Cs-134	x		x	Th-232	x		x
Cs-135	x			U-234			x
Cs-137	x		x	U-235			x
Ce-144	x			U-238			x

It is expected that most of the isotopes have a minor contribution to the dose; in order to not implement all isotopes and decay products in the Ecolego model, a preliminary dose assessment was performed to select a list of radionuclides contributing more to the total dose.

The preliminary assessment was done with the IRAT tool ('Initial Radiological Assessment Tool') for each of the divisions. IRAT is a MS Excel tool developed and maintained by the Environment Agency of England for preliminary assessment of radioactive discharges to the environment from nuclear facilities, hospitals, laboratories, and radiopharmaceutical activities. The tool is based on discharge data with simple annually averaged assumptions and a few user-defined parameters (e.g., river flow for aqueous emissions and stack height for gaseous emissions).

Due to its simplicity, IRAT has some limitations i.e., not all the emitted radionuclides are available in the tool. For that reason, a few of the nuclides have been assessed as other beta/gamma-emitting radionuclides (Cs-137) or using surrogates.

After result evaluation (results shown in Appendix C.1), the list of radionuclides to evaluate using Ecolego is set as those that contributes more to the total dose as well as the ones evaluated as surrogates or as other beta/gamma nuclides which could not be properly evaluated with the IRAT tool (see the list of selected isotopes in Table 5-2). Note that decay products from all these isotopes are also introduced in the model.

Table 5-2. Radionuclides selected for the atmospheric emission dose assessment and the discharge rate to be assessed (Bq/y).

Radionuclide	NUK	Agilera	FoU	Radionuclide	NUK	Agilera	FoU
H-3	2.0E+12			Rn-219		1.0E+10	
Na-22			1.0E+05	Rn-220	5.0E+09	8.0E+10	1.0E+06
Sc-46			1.0E+06	Rn-222	1.0E+09		1.0E+07
Sr-90	3.0E+07			Ra-223		1.0E+08	
Sn-113			1.0E+06	Ra-224	1.0E+06	1.0E+05	1.0E+03

Radionuclide	NUK	Agilera	FoU	Radionuclide	NUK	Agilera	FoU
I-131		2.0E+09	1.0E+05	Ra-228	1.0E+03		1.0E+03
Ba-133			1.0E+03	Br-82	1.0E+09		
Cs-134	1.0E+07			Ac-227	1.0E+06	5.0E+06	
Cs-135	1.0E+06			Th-227		5.0E+06	
Cs-137	3.0E+07			Th-228	5.0E+05	1.0E+06	1.0E+03
Gd-153	1.0E+06			Th-232			1.0E+03
Tb-160	1.0E+06			Tc-99	1.0E+06		
Tb-161	1.0E+06		1.0E+04	Eu-152	5.0E+06		
Hg-203	1.0E+04			Eu-154	1.0E+07		

The release of most of the radionuclides is not continuous and usually cannot be detected in the monitoring samples collected as part of the monitoring program. To verify to the authorities that the emission limit does not have any significant effect to the public, two different scenarios were taken into account:

1. Continuous release (annual limit equally distributed along the year)
2. Total acute release (annual limit released in 1 day)

In order to know the atmospheric concentration in the areas of interest, an atmospheric dispersion plume is simulated with AERMOD.

The following steps and assumptions have been done:

- The studied area of 7x7 km was selected to study the development of the plume from the source in IFE-Kjeller's facilities to nearby areas including Lillestrøm and Rælingen. The model extent can be seen on Figure 5-2.

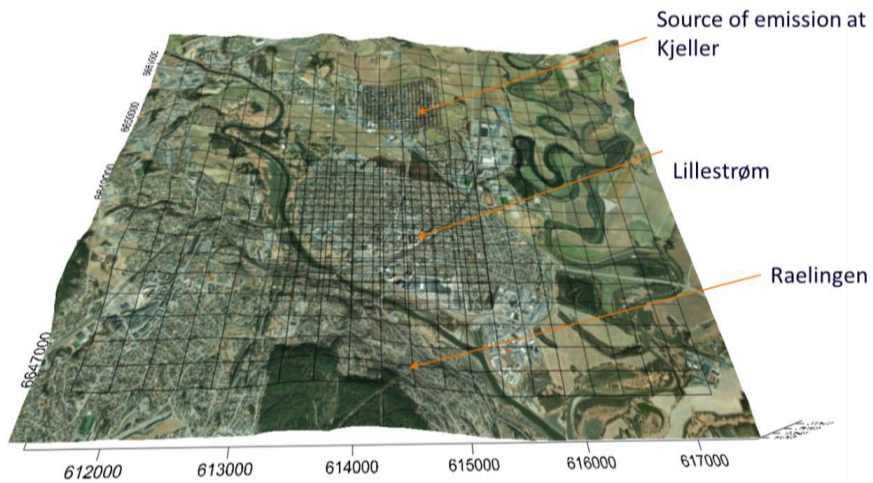


Figure 5-2. AERMOD model domain.

- Meteorological data (e.g., relative humidity, solar irradiance, precipitation, wind speed, etc.) used for the prediction of the radioactive plume movement were obtained from the closest weather station: Kjeller SN4200 [6] for 2021. The wind rose for 2021 is presented in Figure 5-3, showing that the major wind directions are from NE-SW and NW-SE directions.

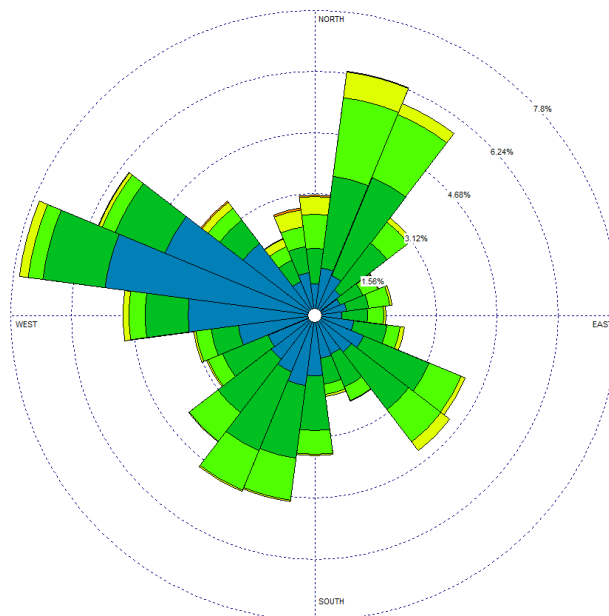


Figure 5-3. Wind rose for 2021 (data processed from Kjeller SN4200 [6]).

- After scoping calculations of the effect of simulating a multiple source release or a single point release, it was decided that a single source is a bit more conservative.

Therefore, one source term has been set for each division (Figure 5-4). The chosen emission points are characterized with a discharge point at a relatively low height and high emission rate, according to the conservative approach.

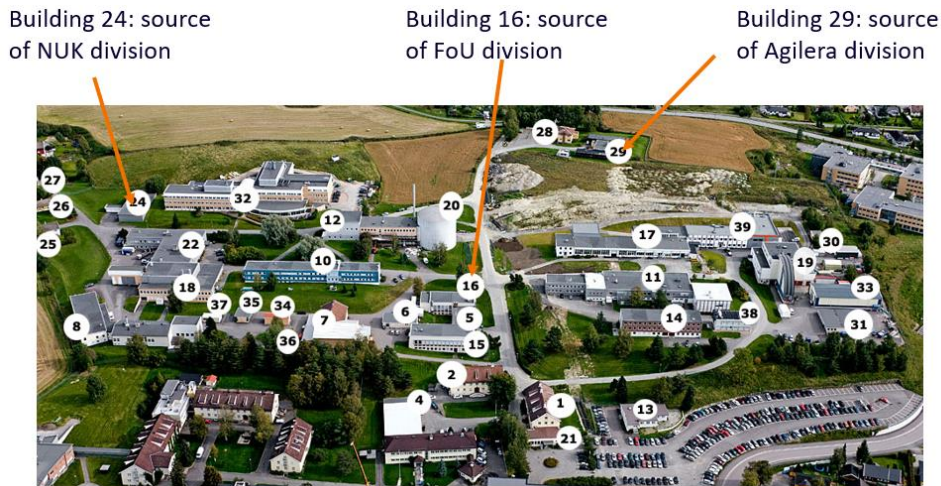


Figure 5-4. Selected sources of emission introduced into AERMOD.

- Two end-points have been selected as receptors to study the temporal evolution of concentration of radionuclides, one representing the concentration in the croplands and the other one, the concentration in the residential area (Figure 5-5).

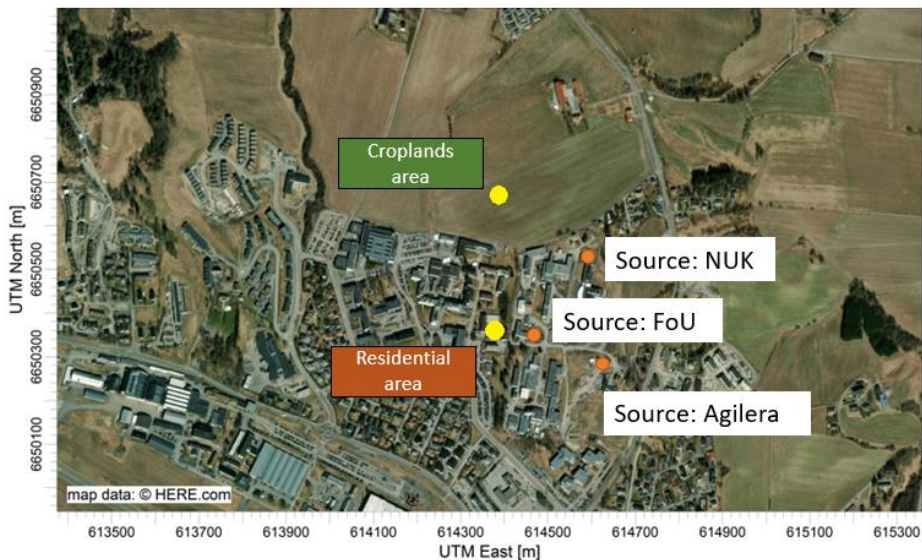


Figure 5-5. Receptor points and emission sources of each division introduced into AERMOD.

- The input data for the total acute release model were chosen based on the unique meteorological conditions at a given day of the year which led to the highest atmospheric concentration at the receptor points, therefore, representing the worst-case scenario.

The concentration values obtained from AERMOD are implemented in the Ecolego model. In the case of the continuous release, the output from the AERMOD model is the average concentration every month during a year (from January to December) (see Table C. 4 and Table C. 5 in Appendix C.2). These data are repeated for each year of the operational period. On the other hand, in the total acute case, an average concentration along the release day is provided (see Appendix C.3.1 and C.3.2). Note that after the day of the total acute release it is considered that the concentration of radionuclides in the atmosphere is too low. Thus, it can be assumed that the radionuclide concentration is close to zero which means that no impact will reach the population due to inhalation or external irradiation due to immersion in the plume.

5.1.1.2 Liquid discharges

Radionuclides released in liquid form originated in each division are discharged together from Building n° 8 (see Figure 5-4) via the NALFA pipeline to the Nitelva river (see Figure 5-6). The release occurs three times per year, and it is assumed that 1/3 of the annual limit is released at every discharge during a period of 28.6 hours.

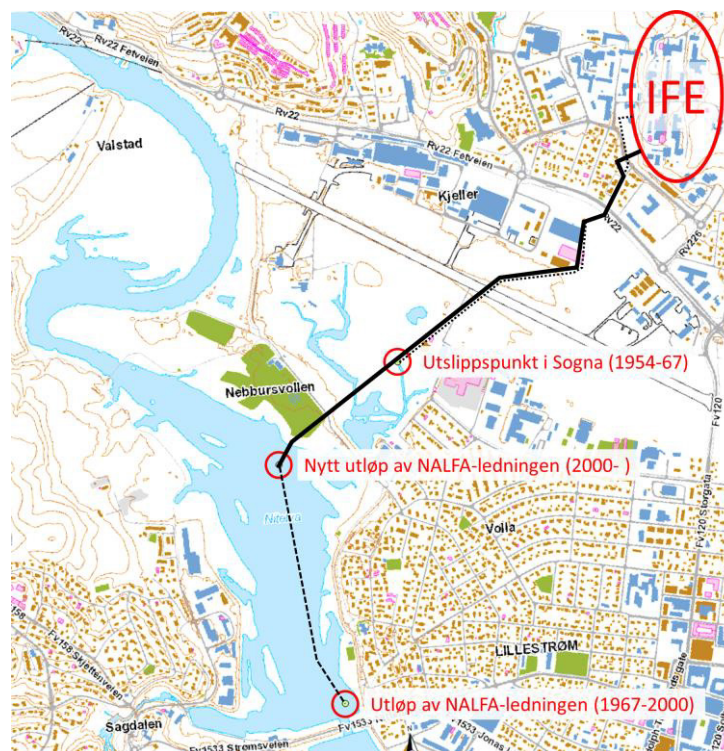


Figure 5-6. Location of the NALFA pipeline, discharge point of the liquid wastes from the IFE-Kjeller facilities.

Although all radionuclides are released from the same release point, each division should be authorised for a series of radionuclides. Therefore, the environmental assessment has been done for each division considering a list of radionuclides and annual limits specific for each division. The list of radionuclides discharged to the river Nitelva from each division is shown in Table 5-3.

Table 5-3. List of radionuclides discharged to the Nitelva river by each division.

Radionuclide	NUK	Agilera	FoU	Radionuclide	NUK	Agilera	FoU
H-3	x		x	Ce-141	x		
C-14	x*		x	Ce-144	x		
Na-22	x*		x	Gd-153	x		
Sc-46	x	x		Tb-160	x		
Cr-51	x			Tb-161	x		x
Mn-54	x			Lu-177	x	x	
Fe-59	x			Lu-177m	x	x	
Co-57	x			Pb-212	x	x	
Co-58	x			Ra-223	x	x	
Co-60	x		x	Ra-224	x	x	x
Ni-63	x			Ra-228	x		x
Zn-65	x			Ac-225	x	x	
Sr-90	x			Ac-227	x	x	
Y-90	x	x		Th-227	x	x	
Zr-95	x			Th-228	x	x	x
Nb-95	x			Th-230	x		x
Tc-99	x	x		Th-232	x		x
Ru-103	x			U-234	x		x
Ru-106	x			U-235	x		x
Ag-108m	x			U-236	x		
Ag-110m	x			U-238	x		x
Cd-109	x			Np-237	x		
Sn-113	x			Pu-238	x		
Sb-122	x			Pu-239	x		
Sb-124	x			Pu-240	x		

Radionuclide	NUK	Agilera	FoU	Radionuclide	NUK	Agilera	FoU
Sb-125	x			Pu-241	x		
I-125	x	x		Pu-242	x		
I-131	x	x		Am-241	x		
Ba-133	x		x	Am-242m	x		
Ba-140	x			Am-243	x		
Cs-134	x		x	Cm-242	x		
Cs-137	x		x	Cm-243	x		
La-140	x			Cm-244	x		

* These nuclides are not included in this assessment but in the FoU assessment. As their impact results as no significant from the Preliminary Assessment performed with the IRAT tool for the FoU division, it will not be significant for NUK.

As explained before, a preliminary assessment was conducted using the IRAT tool. Table 5-4 presents the final list of nuclides included in the Ecolego model, which includes the isotopes contributing more to the total dose and those isotopes evaluated as surrogates or other beta/gamma emitters.

Table 5-4. Radionuclides selected for the liquid discharge dose assessment and the discharge rate to be assessed (Bq/y).

Radionuclide	NUK	Agilera	FoU	Radionuclide	NUK	Agilera	FoU
H-3	5.0E+12			Tb-161			1.0E+04
Sc-46	1.0E+04	1.0E+04		Lu-177	5.0E+08	5.0E+08	
Co-60	2.7E+08			Lu-177m	1.0E+04	1.0E+04	
Ru-106	1.0E+07			Ra-223	2.0E+08	2.0E+08	
Ag-108m	5.0E+06			Ra-224	1.0E+06	1.0E+06	1.0E+04
Cd-109	3.0E+07			Ra-228	1.0E+07		1.0E+04
Ag-110m	1.0E+06			Ac-227		2.5E+04	
Sn-113	1.0E+06			Th-227		1.0E+06	
I-125	5.0E+07	5.0E+07		Th-228		2.0E+06	
I-131	5.0E+08	5.0E+08		Th-232	1.0E+06		1.0E+04
Ba-133			1.0E+04	Pu-239	1.5E+07		
Cs-134	2.5E+07		1.0E+07	Pu-240	1.5E+06		
Cs-137	1.5E+08			Pu-242	1.0E+05		

5.1.2 Transferences

This section includes all the transferences of radionuclides released to the environment. Each transfer is characterised by an expression which has been introduced into Ecolego to obtain the concentration of each isotope in each compartment. The majority of the formulations related with transferences of nuclides between compartments have been obtained from [7], however some formulations have also been obtained from [8], [9] and [10].

As some of the transferences are the same for both systems, they are not classified per system.

The values of parameters used in this project are not presented in this section. All of them are included in Appendix A to avoid a huge number of tables within the section. Note that some of the parameters such as the sorption coefficient depends on the element and the environment media that the radionuclide is sorbed onto, hence an extended number of values should be presented.

Liquid discharge

Liquid discharge refers to the release of radionuclides into the river via the pipeline during the three pulses made each year ($Disch, \frac{Bq}{s}$). It can be calculated with Eq. 1.

$$Disch = Disch_r \cdot Pulse \quad \text{Eq. 1}$$

where

$Disch_r$ is the discharge rate ($\frac{Bq}{y}$),

$Pulse$ is a pulse lasting 28.6h, three times a year (-). The value is set to 1 during the pulse and 0 when there is no discharge.

Deposition

Deposition is a process by which particles or gases in the atmosphere are transferred to a surface. The amount of radionuclides transferred from the air compartment i to the soil compartment j by deposition ($Dep_{rate,ij}, \frac{Bq}{s}$) can be calculated using Eq. 2.

$$Dep_{rate,ij} = Conc_{Atmc} \cdot Area_j \cdot V_{dep} \quad \text{Eq. 2}$$

where

- $Conc_{Atmc}$ is the ground level air concentration calculated by AERMOD $\left(\frac{Bq}{m^3}\right)$,
 $Area_j$ is the area of compartment j (m^2),
 V_{dep} is the dry deposition velocity $\left(\frac{m}{s}\right)$.

Sedimentation

Sedimentation refers to the transfer of radionuclides due to deposition of the particulate matter on the river bottom (sediments). The transfer rate of radionuclides from the river compartment i to the sediments compartment j due to sedimentation ($\lambda_{sed,ij}$, y^{-1}) is calculated using Eq. 3.

$$\lambda_{sed,ij} = \frac{r_{sed} \cdot Kd_{SS}^n}{h_i \cdot R_i^n} \quad \text{Eq. 3}$$

where

- r_{sed} is the sedimentation rate $\left(\frac{kg}{m^2 \cdot y}\right)$,
 Kd_{SS}^n is the distribution coefficients for radionuclide n in suspended solids $\left(\frac{m^3}{kg}\right)$,
 h_i is the depth or thickness of compartment i (m),
 R_i^n is the retardation factor for radionuclide n in compartment i (-).

The retardation factor for the radionuclide $R_{Riv,i}^n$, can be described using Eq. 4 where S_s is the concentration of suspended solids in the river $\left(\frac{kg}{m^3}\right)$.

$$R_{Riv,i}^n = 1.0 + Kd_{SS}^n \cdot S_s \quad \text{Eq. 4}$$

Resuspension

Resuspension stands for the removal of deposited material from the sediment back into the river. The transfer rate of radionuclides from source compartment i to target compartment j due to resuspension ($\lambda_{res,ij}$, y^{-1}) is described by Eq. 5

$$\lambda_{res,ij} = \frac{r_{res} \cdot Kd_i^n}{h_i \cdot por_i \cdot R_i^n} \quad \text{Eq. 5}$$

where

- r_{res} is a resuspension rate $\left(\frac{kg}{m^2 \cdot y}\right)$.

For the sediment and soil compartments, the retardation factor for the radionuclide R_i^n is calculated using Eq. 6.

$$R_i^n = 1.0 + \frac{Kd_i^n \cdot \rho_i}{por_i} \quad \text{Eq. 6}$$

where

Kd_i^n is the distribution coefficients for radionuclide n in compartment i ($\frac{m^3}{kg}$),

ρ_i is the density of compartment i ($\frac{kg}{m^3}$),

por_i is the porosity of compartment i ($\frac{m^3}{m^3}$).

Irrigation

Irrigation is the process of watering the crops. When water used for the irrigation is contaminated, the radionuclides are transported to the soils and can also contaminate the plants growing in the irrigated area. The transfer rate of radionuclides from source compartment i to target compartment j due to irrigation ($\lambda_{irr,ij}, y^{-1}$) is given by Eq. 7.

$$\lambda_{irr,ij} = \frac{Area_j \cdot r_{irr}}{V_j} \quad \text{Eq. 7}$$

where

r_{irr} is the irrigation rate ($\frac{m^3}{m^2 \cdot y}$),

V_j is the volume of compartment j (m^3).

Advection in river

Advection in river refers to the transport of radionuclides by the bulk movement of the river water, i.e., the river flow. The transfer rate of radionuclides from river compartment i to river downstream compartment j due to advection ($\lambda_{adv,r,i,j}, y^{-1}$) is given by Eq. 8.

$$\lambda_{adv,r} = \frac{Qv_i}{V_i} \quad \text{Eq. 8}$$

where

Qv_i is the water flux in the river compartment i ($\frac{m^3}{s}$).

Bioturbation

Bioturbation is the physical rearrangement (reworking) of the upper part of the soil profile by actions of living organisms. This can include digging, burrowing, and other activities that change the structure of the soil or sediment, as well as the movement of nutrients and other materials within it. The transfer rate of radionuclides from source compartment i to target compartment j due to bioturbation ($\lambda_{BT,ij}, y^{-1}$) is expressed in Eq. 9.

$$\lambda_{BT,ij} = \frac{BioT_i}{h_i \cdot \rho_i} \left(1 - \frac{1}{R_i^n}\right) \quad \text{Eq. 9}$$

where

$BioT_i$ is the amount of soil affected by bioturbation in compartment i ($\frac{kg}{m^2 \cdot y}$).

Diffusion

Diffusion stands for the movement of particles from an area of high concentration to an area of low concentration. This process continues until the concentration of the particles is equalized. Diffusion can occur in liquids, gases, and solids, and therefore, it will affect radionuclides in both solid and aqueous phases of soil. The transfer rate of radionuclides from source compartment i to target compartment j due to diffusion ($\lambda_{dif,ij}, y^{-1}$) is given by Eq. 10.

$$\lambda_{dif,ij} = \frac{2D_i^n}{h_i^2 \cdot R_i^n} \quad \text{Eq. 10}$$

where

D_i^n is the diffusion coefficient for radionuclide n in compartment i ($\frac{m^2}{y}$).

And depending on whether the source compartment is a river or soil/sediment, $R_{Riv,i}^n$ or R_i^n is used respectively.

Advection

Advection in soils refers to the transport of solutes by the bulk movement of soil water due to pressure gradients. The transfer rate of radionuclides from source soil compartment i to target soil compartment j due to advection ($\lambda_{adv,s,i,j}, y^{-1}$) is expressed by Eq. 11.

$$\lambda_{adv,s,i j} = \frac{Wf_i}{h_i \cdot por_i \cdot R_i^n} \quad \text{Eq. 11}$$

where

Wf_i is the water flux in the soil compartment i ($\frac{m}{year}$).

5.1.3 Compartment concentration

The total concentration of the radionuclide n in compartment i is given by Eq. 12.

$$Conc_{T_i}^n = \frac{A_i^n}{V_i} \quad \text{Eq. 12}$$

where

A_i^n is the total activity of radionuclide n in the compartment i (Bq).

The calculated concentrations of radionuclides in each soil or sediment compartment include both the aqueous and sorbed phases. The concentration of the radionuclide n in compartment i in the aqueous phase ($Conc_{aq_i}^n, \frac{Bq}{m^3 \text{ water}}$) was calculated using Eq. 13, while the concentration of the radionuclide n in the compartment i in the solid phase ($Conc_{sorb_i}^n, \frac{Bq}{kg \text{ soil}}$) is expressed by Eq. 14.

$$Conc_{aq_i}^n = \frac{A_i^n}{V_i \cdot por_i + V_i \cdot Kd_i^n \cdot \rho_i(1 - por_i)} \quad \text{Eq. 13}$$

$$Conc_{sorb_i}^n = \frac{A_i^n \cdot Kd_i^n}{V_i \cdot por_i + V_i \cdot Kd_i^n \cdot \rho_i(1 - por_i)} \quad \text{Eq. 14}$$

5.2 Dose Model

The dose model has been developed considering every possible exposure pathway. Both external and internal irradiation sources have been taken into consideration e.g., external dose received by immersion in plume and being near the contaminated water/soil or internal dose from eating contaminated foodstuff or inadvertent consumption of soil. The majority of the equations presented in this section have been obtained from IAEA recommendations [8], while some have been obtained from [7], [11], [12] and [13].

Total effective dose for the exposed group is calculated as the sum of the effective dose received by each radionuclide via each exposure pathway, as represented in Eq. 15. It estimated the effective annual dose that can be compared with national and international regulations.

$$E_T = \sum_{n,path} E_{path}^n \quad \text{Eq. 15}$$

External dose - Immersion in atmospheric plume

Radionuclides emitted into the air are transported within the plume based on the atmospheric conditions. Immersion in such an atmospheric plume can contribute to the received dose through an external irradiation. The annual effective dose received due to the submersion in air ($E_{im,a}, \frac{Sv}{y}$) is expressed with the Eq. 16.

$$E_{im,a} = Conc_{AtmC} \cdot DC_{im,atm,m}^n \cdot O_{fC,m} + Conc_{AtmR} \cdot DC_{im,atm,m}^n \cdot O_{fR,m} \quad \text{Eq. 16}$$

where

- $Conc_{AtmC}$ is the radionuclide concentration in air in cropland area ($\frac{Bq}{m^3}$),
- $DC_{im,atm,m}^n$ is the dose coefficient for air submersion for radionuclide n and age group m ($\frac{Sv/s}{Bq/m^3}$),
- $O_{fC,m}$ is the occupancy rate (time spent in the croplands area) for age group m ($\frac{y}{y}$),
- $Conc_{AtmR}$ is the radionuclide concentration in air in residential area ($\frac{Bq}{m^3}$),
- $O_{fR,m}$ is the occupancy rate (time spent in the residential area) for age group m ($\frac{y}{y}$).

External dose - Irradiation from soil

Dose due to irradiation from soil refers to the amount of radiation that an individual is exposed to as a result of the radiation emitted from the soil. Annual effective dose received due to exposure to ground deposition ($E_{ext}, \frac{Sv}{y}$) can be calculated with Eq. 17.

$$E_{ext} = Conc_{T_{TSO,i}} \cdot DC_{ext,m}^n \cdot O_{fC,m} \quad \text{Eq. 17}$$

where

- $Conc_{T_{TSO,i}}$ is the total radionuclide concentration in the top-soil compartment i ($\frac{Bq}{m^3}$),

$DC_{ext,m}^n$ is the dose coefficient for exposure to ground deposits for radionuclide n and age group m $\left(\frac{Sv/s}{Bq/m^3}\right)$.

External dose – Swimming in the river

Swimming in the contaminated river is contributing to the total dose due to the external irradiation. Annual effective dose received due to swimming in the contaminated river $\left(E_{im,w}, \frac{Sv}{y}\right)$ is expressed by Eq. 18.

$$E_{im,w} = Conc_{T Riv,i} \cdot O_{fS,m} \cdot DC_{im,w,m}^n \quad \text{Eq. 18}$$

where

$Conc_{T Riv,i}$ is the radionuclide concentration in the river $\left(\frac{Bq}{m^3}\right)$,

$O_{fS,m}$ is the occupancy rate (time spent swimming in the river) for age group m $\left(\frac{y}{y}\right)$,

$DC_{im,w,m}^n$ is the dose coefficient for water immersion for radionuclide n and age group m $\left(\frac{Sv/y}{Bq/m^3}\right)$.

External dose – Boating in the river

Boating in the contaminated river leads to the increase of the received dose via the external irradiation. Annual effective dose received due to boating in the contaminated river $\left(E_{ext,w}, \frac{Sv}{y}\right)$ can be calculated by Eq. 19.

$$E_{ext,w} = Conc_{T Riv,i} \cdot O_{fB,m} \cdot (0.5 \cdot DC_{im,w,m}^n) \quad \text{Eq. 19}$$

where

$O_{fB,m}$ is the occupancy rate (time spent boating in the river) for age group m $\left(\frac{y}{y}\right)$.

Inhalation

Inhalation of the radioactive particles and/or gases is an important contribution to the total dose by internal irradiation. Since the radionuclides are transported into the organism, all types of radiation (alpha, beta and gamma) can cause harm to the organs and increase the dose.

Annual effective dose received due to inhalation of radioactive particles and/or gases ($E_{inh}, \frac{Sv}{y}$) is expressed by Eq. 20.

$$E_{inh} = Conc_{AtmC} \cdot R_{inhC,m} \cdot DC_{inh,m}^n \cdot O_{fC,m} + Conc_{AtmR} \cdot R_{inhR,m} \cdot DC_{inh,m}^n \cdot O_{fR,m} \quad \text{Eq. 20}$$

where

- $R_{inhC,m}$ is the inhalation rate in croplands for age group m ($\frac{m^3}{h}$),
- $DC_{inh,m}^n$ is the dose coefficient for inhalation for radionuclide n and age group m ($\frac{Sv}{Bq}$),
- $R_{inhR,m}$ is the inhalation rate in residential area for age group m ($\frac{m^3}{h}$).

Ingestion of crops

Ingestion of contaminated crops can result in exposure to ionizing radiation if the crops have been contaminated with radioactive materials. The annual effective dose received due to consumption of contaminated crops ($E_{ing,c}, \frac{Sv}{y}$) is described by Eq. 21.

$$E_{ing,c} = Conc_{crop} \cdot H_{c,m} \cdot DC_{ing,m}^n \quad \text{Eq. 21}$$

where

- $H_{c,m}$ is the consumption rate for crops for age group m ($\frac{kg}{y}$),
- $DC_{ing,m}^n$ is the dose coefficient for ingestion for radionuclide n and age group n ($\frac{Sv}{Bq}$),
- $Conc_{crop}$ is the radionuclide concentration in crops at the time of consumption ($\frac{Bq}{kg}$) and is calculated following Eq. 22.

$$Conc_{crop} = (Conc_{crop,0}) \exp(-\lambda_i^n \cdot t_h) \quad \text{Eq. 22}$$

where

- λ_i^n is the constant for radioactive decay of radionuclide n (y^{-1}),
- t_h is the delay (hold-up) time which represents the time interval between harvest and consumption of the food (d),
- $Conc_{crop,0}$ is the radionuclide concentration in crops at the time of harvesting ($\frac{Bq}{kg}$).

Crops concentration, $Conc_{crop,0}$, depends on the source of emission. As explained in section 4.1, in both atmospheric and surface water models, radionuclides are considered to be

intercepted by vegetation in three different ways: deposition for the atmospheric model, irrigation for the surface water model, and root uptake for both of them.

Taking this into account, radionuclide concentration in crops at the time of harvesting ($Conc_{crop,0}, \frac{Bq}{kg}$) for the atmospheric and for the surface water model are expressed in Eq. 23 and Eq. 24 respectively:

$$Conc_{crop,0} = Conc_{crop_root} + Conc_{crop_atm} \quad \text{Eq. 23}$$

$$Conc_{crop,0} = Conc_{crop_root} + Conc_{crop_irr} \quad \text{Eq. 24}$$

Radionuclide concentration in vegetation arising from root uptake from the soil and from soil adhering to the vegetation ($Conc_{crop_root}, \frac{Bq}{kg \text{ fresh matter}}$) can be calculated using Eq. 25.

$$Conc_{crop_root} = F_v^n \cdot Conc_{sorb_{TSO,i}} \quad \text{Eq. 25}$$

where

F_v^n is the concentration factor for uptake of the radionuclide n from soil by edible parts of crops ($\frac{Bq/kg \text{ plant tissue}}{Bq/kg \text{ dry soil}}$),

$Conc_{sorb_{TSO,i}}$ is the sorbed radionuclide concentration in the top soil compartment i ($\frac{Bq}{kg}$).

Radionuclide concentration due to direct deposition onto crops ($Conc_{crop_atm}, \frac{Bq}{kg \text{ fresh matter}}$) is described in Eq. 26.

$$Conc_{crop_atm} = \frac{\dot{d}_{atm}^n \cdot \alpha [1 - \exp(-\lambda_E^n \cdot t_{e,crops})]}{\lambda_E^n} \quad \text{Eq. 26}$$

where

\dot{d}_{atm}^n is the deposition rate of radionuclide n on to the ground ($\frac{Bq}{m^2s}$), calculated as $\dot{d}_{atm}^n = Conc_{Atmc} \cdot V_{dep}$,

α is the fraction of deposited activity intercepted by the edible portion of vegetation per unit mass ($\frac{m^2}{kg}$),

$t_{e,crops}$ is the time period that crops are exposed to contamination during the growing season (d),

λ_E^n is the effective rate constant for reduction of the activity concentration of radionuclide n from crops (y^{-1}) and is computed following Eq. 27.

$$\lambda_E^n = \lambda_i^n + \lambda_w \quad \text{Eq. 27}$$

where

λ_w is the rate constant for reduction of the concentration of material deposited on the plant surfaces owing to processes other than radioactive decay (y^{-1}).

Finally, radionuclide concentration due to irrigation of cultivated areas for nuclide n ($Conc_{crop_irr, \frac{Bq}{kg \text{ fresh matter}}}$) is expressed in Eq. 28.

$$Conc_{crop_irr} = \frac{\dot{d}_{irr} \cdot \alpha [1 - \exp(-\lambda_E^n \cdot t_{e,crops})]}{\lambda_E^n} \quad \text{Eq. 28}$$

where

\dot{d}_{irr} is the deposition rate for irrigation of cultivated areas ($\frac{Bq}{m^2 \cdot y}$), calculated as $\dot{d}_{irr} = r_{irr} \cdot Conc_{T_{Riv,i}}$.

For some isotopes such as 3H , Eq. 23 and Eq. 24 cannot be applied, and its concentration in crops should be estimated differently. This is because the behaviour of this environmentally mobile radionuclide mimics that of stable hydrogen in biological processes. In the most basic implementation, tritium in the environment is assumed to be in the oxide (HTO) form and to behave identically to water. Therefore, the concentration of tritium in vegetation ($Conc_{crop,0}^{3H, \frac{Bq}{kg}}$) is calculated following Eq. 29.

$$Conc_{crop,0}^{3H} = 9 Conc_w^{3H} F_v^{3H} \quad \text{Eq. 29}$$

where

$Conc_w^{3H}$ is the concentration of tritium in the environmental water ($\frac{Bq}{L}$), calculated as

$$Conc_w^{3H} = \frac{Conc_{atmC}^{3H}}{H_a}$$

H_a is the absolute humidity in air ($\frac{kg}{m^3}$)

F_v^{3H} is the concentration factor for uptake of the tritium from soil by edible parts of crops ($\frac{Bq/kg \text{ plant tissue}}{Bq/kg \text{ dry soil}}$).

Ingestion of fish

Ingestion of contaminated fish can result in exposure to ionizing radiation if the fish have been contaminated with radioactive materials. Annual effective dose received due to consumption of fish ($E_{ing,f}, \frac{Sv}{y}$) is described by Eq. 30.

$$E_{ing,f} = Conc_{fish}^n \cdot H_{fish} \cdot DC_{ing,m}^n \quad \text{Eq. 30}$$

where

H_{fish} is the consumption rate for fish ($\frac{kg}{y}$).

$Conc_{fish}^n$ is the concentration of radionuclide n in fish at the time of consumption ($\frac{Bq}{kg}$) and is expressed in Eq. 31.

$$Conc_{fish}^n = Conc_{T_{Riv,i}} B_{fish}^n \quad \text{Eq. 31}$$

where

B_{fish}^n is the equilibrium ratio of the concentration of radionuclide n in fish to its dissolved concentration in water, known as the bioaccumulation factor ($\frac{Bq/kg}{Bq/L}$).

Inadvertent ingestion of soil

Contaminated soil can be ingested unintentionally and increase the dose from internal irradiation. Annual effective dose received due to inadvertent consumption of soil ($E_{ing,in}, \frac{Sv}{y}$) can be calculated with the Eq. 32.

$$E_{ing,in} = Conc_{sorb_{T_{So,i}}} \cdot Q_{soil,m} \cdot DC_{ing,m}^n \quad \text{Eq. 32}$$

where

$Q_{soil,m}$ is the amount of soil ingested by inadvertence for age group m ($\frac{mg}{d}$).

6 Results

This section presents the results obtained from the dose impact estimation to the public due to atmospheric and liquid discharges from IFE-Kjeller NUK facilities. Results are presented per each discharge type and both the dose rate and the annual dose during the operational period is presented. An extended list of results is also included in Appendix C.3, where a summary of the obtained results for the last year of the operation of the facilities is presented in terms of environment concentration and the dose of each isotope via each pathway.

Results of the radionuclides concentration in the environment are not presented in this section but a summary is provided in Appendix B.

6.1 Continuous atmospheric emission

The continuous atmospheric emission scenario considers that the maximum amount of radionuclide that can be released along a year is continuously emitted to the atmosphere at a constant rate. As mentioned in Section 5.1.1.1, the atmospheric dispersion model has been implemented in AERMOD, providing monthly radionuclide concentration both in the croplands and residential areas. This has been the input data for the Ecolego model, which simulates the same annually evolution of radionuclides concentration in these areas along the whole operational period (60 years).

Figure 6-1 presents the evolution of the dose rate in $\mu\text{Sv/h}$ during the first and last year of the operational period for each of the studied age groups (infant, child and adult). In all cases the dose rate is lower than $0.001 \mu\text{Sv/h}$.

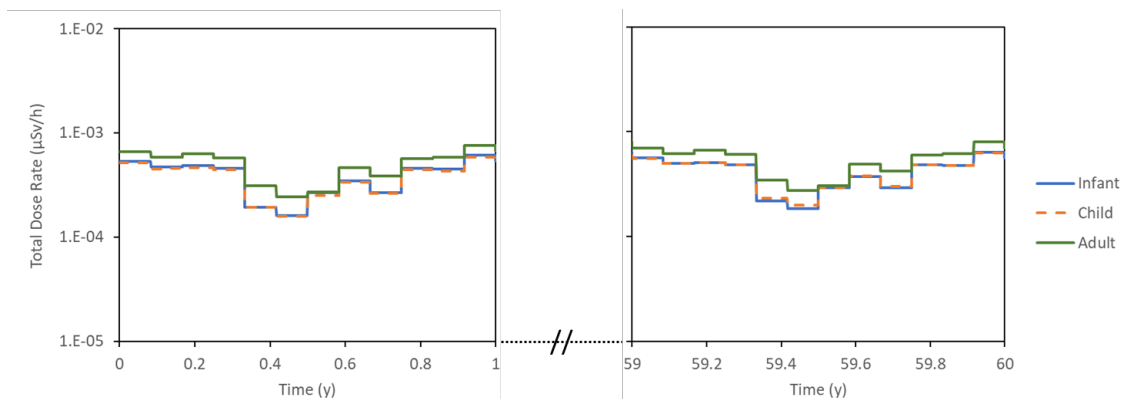


Figure 6-1. Evolution of total dose rate with time for each exposed age group under the continuous atmospheric emission scenario.

As the reference group is exposed to different dose rate along the year, Figure 6-2 presents the estimated annual dose each exposed group would receive every operational year, that remains lower than $5 \mu\text{Sv}$.

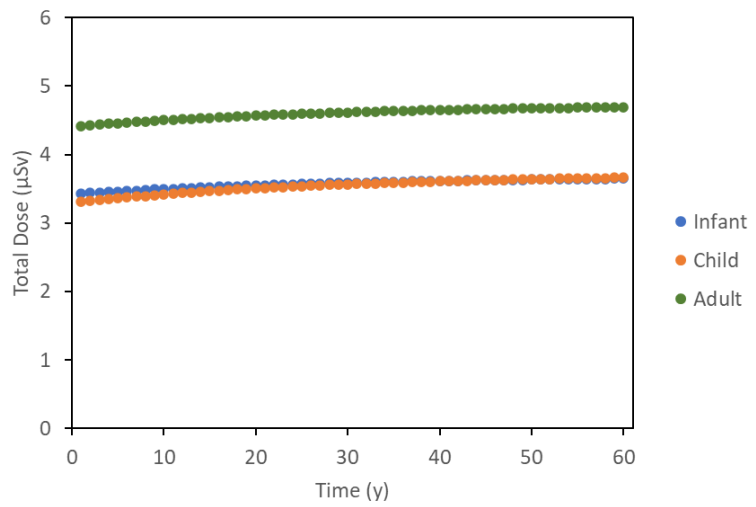


Figure 6-2. Evolution of the total annual dose with time for each exposed age group under the continuous atmospheric emission scenario.

Both inhalation and the consumption of crops cultivated in the croplands affected by the atmospheric plume are the exposure pathways that contributes more to the total dose (see left graph in Figure 6-3). The right graph in Figure 6-3 shows that the dose mainly comes from the exposure to tritium both inhaled and ingested via the consumption of crops. Tritium exposure contributes to 60-70% of the total dose.

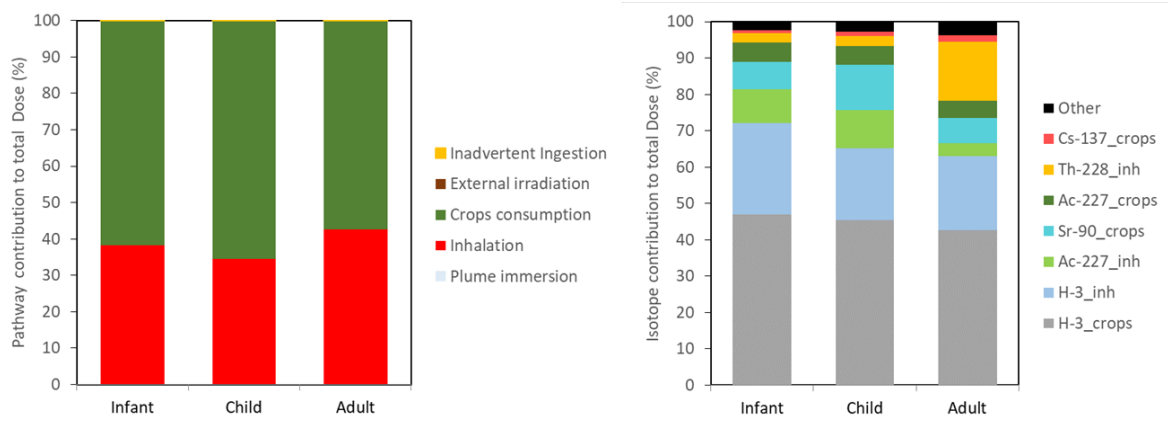


Figure 6-3. Contribution of exposure pathways (left) and isotope (right) contribution to the total annual dose under the continuous atmospheric emission scenario.

As observed in Figure 6-2, the annual dose received by the selected reference groups during the operational period of Kjeller-NUK facilities increases with time. The reason is that about 10-20% of the dose comes from the ingestion of Sr-90 and Ac-227 via crops consumption. As the concentration of those radionuclides increases in the soil and crops are contaminated via

direct deposition from the environment and due to the absorption of isotopes from the soil via the plant roots, the concentration of Sr and Ac in crops is higher at the latest years of the studied period (see the example of Sr-90 in Figure 6-4).

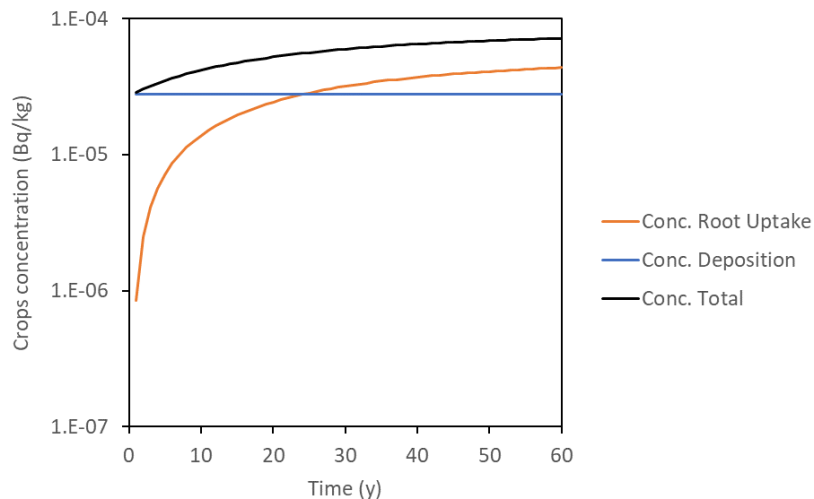


Figure 6-4. Sr-90 concentration in crops (total, back line) and the concentration due to the isotope interception via de atmospheric deposition (blue line) and the uptake via the roots from the soil (orange line).

An extended presentation of results is presented in the appendixes, where it is included:

- Radionuclides concentration in the environment (Appendix B.1)
- The mean concentration of each isotope during the last year of operation in the soil of the cropland area (Appendix C.3.1)
- Total annual dose received by each age group for each isotope via each exposure pathway (Appendix C.3.1)

6.2 Total acute atmospheric emission

This scenario aims on evaluating the impact to the population in case of a total acute release. It is assumed that the maximum amount that could be released in one year is release in one day. The output data from AERMOD can be found in the Appendix C.2. The mean concentration of each isotope during the release day, both in the croplands and the residential area, is implemented in Ecolego and the dose is estimated for the whole operational period assuming one total acute release per year.

The dose rate evolution is presented in Figure 6-5 where the first and last 4 years of the operational period are shown. A similar evolution is observed along the whole studied period, during the release rate event the population is exposed to the highest dose rate that rapidly decreases when the emission stops. With the years, the dose rate during the days after the total acute release increases due to the accumulation of radioactivity in the environment.

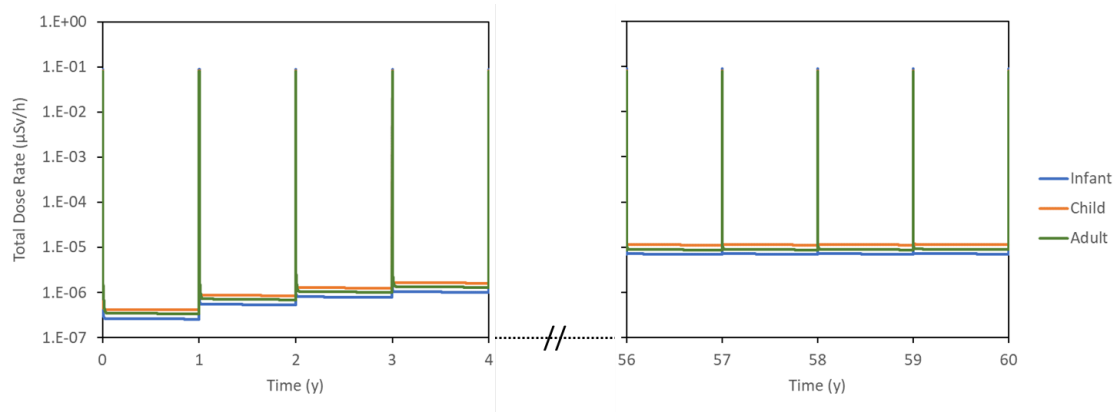


Figure 6-5. Evolution of total dose rate with time for each exposed age group under the total acute atmospheric emission scenario.

The dose rate during the release day is about 0.1 µSv/h while during the whole year the dose rate is always below 10^{-4} µSv/h. Considering one year of exposure, the dose received by the exposed groups is lower than 3 µSv (see Figure 6-6). Note that, the 98% of the dose received along the year comes from the exposure to the radioactivity during the day of the total acute release.

It is observed a slightly increase of the dose with time that it is due to the increase of Sr and Ac concentration in the soil as observed in the continuous atmospheric emission scenario.

Studied reference groups are mainly exposed to tritium (60-70% of the total dose) both inhaled and ingested via crops (see Figure 6-7). The exposure to actinium-227 is also relevant, representing between 15 and 20% of the total dose received. Note that the estimation of the dose due to exposure to crops is conservative as, dose is calculated from the concentration in the atmosphere that is deposited both to the crops and to the soil and Ecolego assumes an instantaneous and homogeneous distribution of the radionuclides in the compartments.

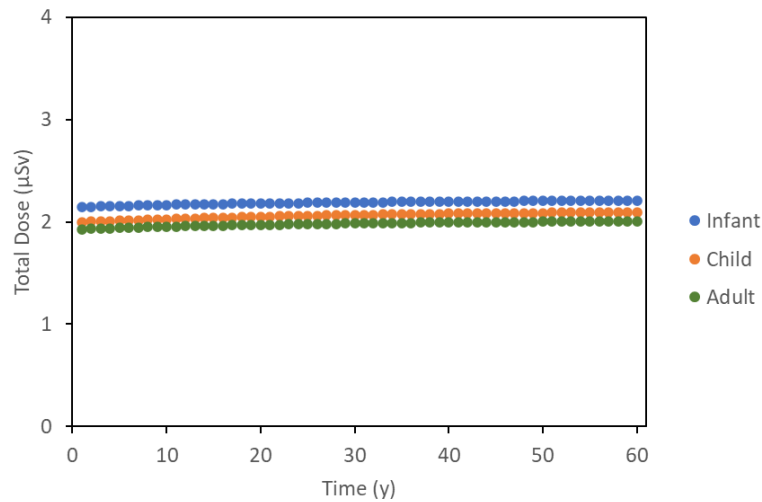


Figure 6-6. Evolution of the total annual dose with time for each exposed age group under the total acute atmospheric emission scenario.

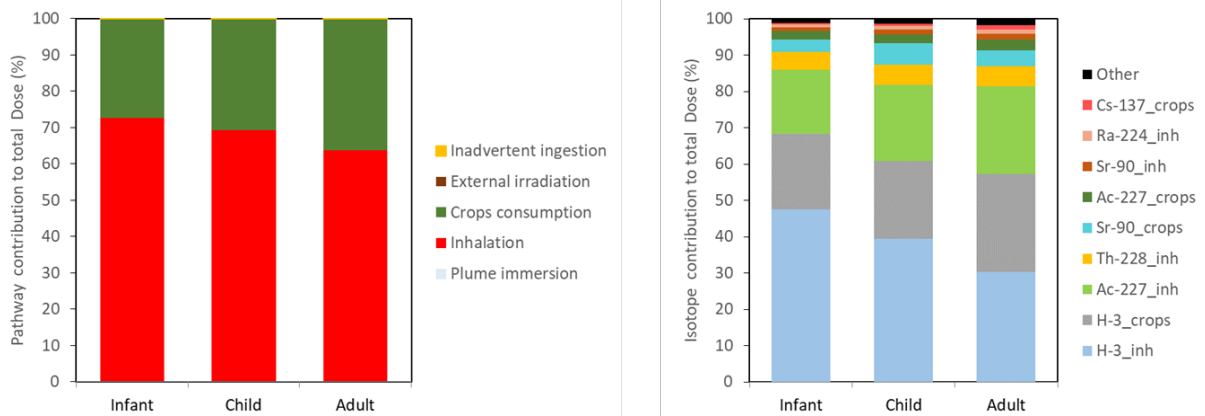


Figure 6-7. Contribution of exposure pathways (left) and isotope (right) contribution to the total annual dose under the total acute atmospheric emission scenario.

An extended presentation of results is presented in the appendixes, where it is included:

- Radionuclides concentration in the environment (Appendix B.2)
- The mean concentration of each isotope during the last year of operation in the soil of the cropland area (Appendix C.3.2)
- Total annual dose received by each age group for each isotope via each exposure pathway (Appendix C.3.2)

6.3 Liquid discharges

Liquid discharges are released to the Nitelva river three times per year through the NALFA pipeline. NUK is receiving liquid wastes from other divisions and is in charge to discharge them to the river, so dose is considering not only the wastes they are producing but also those they are receiving. The activity of radionuclides released every time is 1/3 of the annual release to the river.

Figure 6-8 presents the evolution of the dose rate during the first and the last year of the operational period assessed in this project. The maximum dose rate is received every time a discharge to the river occurs, being always below 10^{-5} $\mu\text{Sv/h}$ (see Figure 6-8).

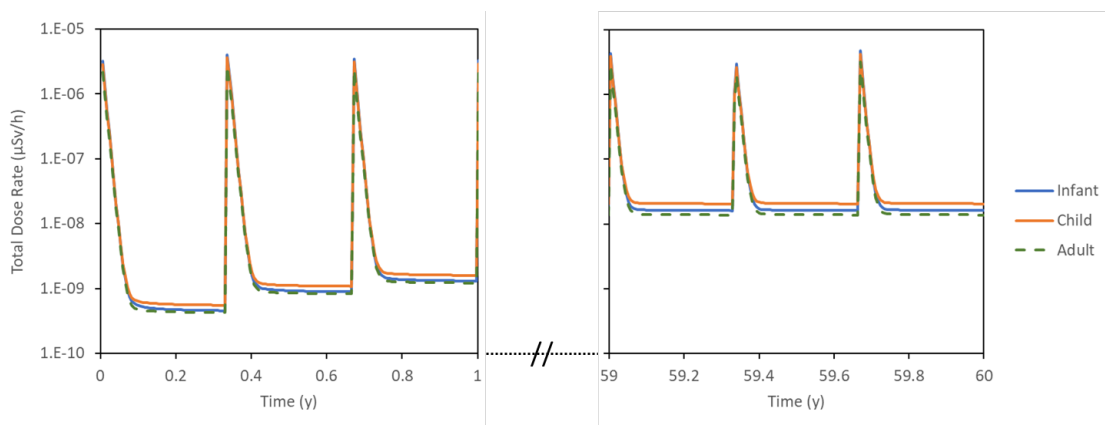


Figure 6-8. Evolution of the total annual dose with time for each exposed age group under the liquid discharges scenario.

The annual exposure of the population along a year increases during the operational period (Figure 6-9). However, the annual dose remains below than 0.002 μSv for all the age group under the studied conditions.

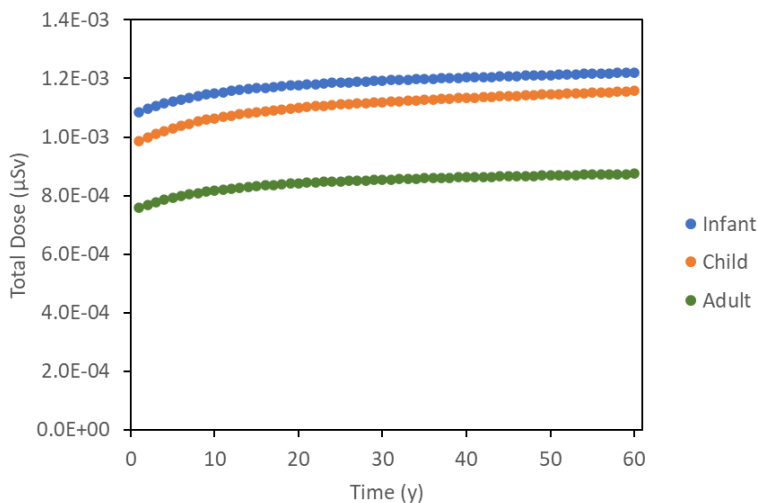


Figure 6-9. Evolution of the total annual dose with time for each exposed age group under the liquid discharges scenario.

Although the annual dose does not reach high values, it increases with time. This is because about half of the dose is due to the exposure of the reference group to radionuclides present in crops that are consumed (see Figure 6-11). The rise of the dose due to the consumption of crops is due to the accumulation of some radionuclides such as Ra-228 in the soil, that causes an increase of the concentration in crops, as observed in Figure 6-10.

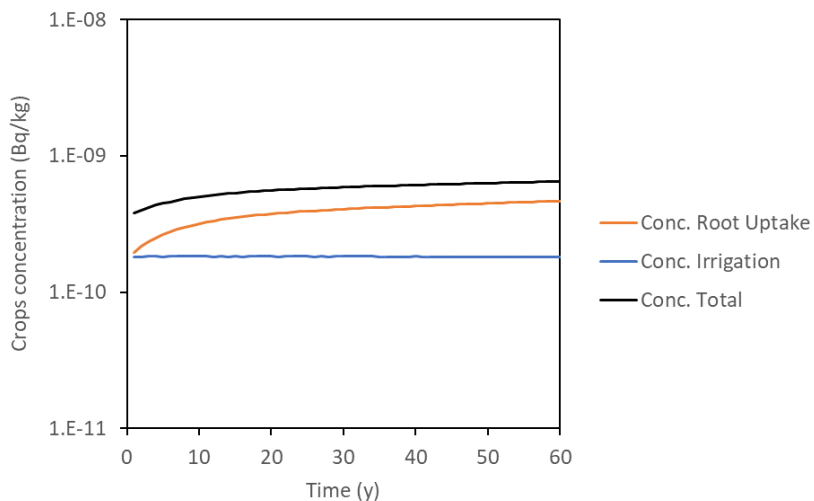


Figure 6-10. Ra-228 concentration in crops (total, back line) and the concentration due to the isotope interception via de atmospheric deposition (blue line) and the uptake via the roots from the soil (orange line).

As shown in Figure 6-11, half of the dose comes from the consumption of fish and from the consumption of crops. Tritium and Ra-228 ingested via the consumption of crops and the ingestion of iodine-131 and radium-223 via fish are the isotopes contributing more to the total dose (Figure 6-11). Several isotopes present in fish and crops contribute to the remaining 20% of the dose.

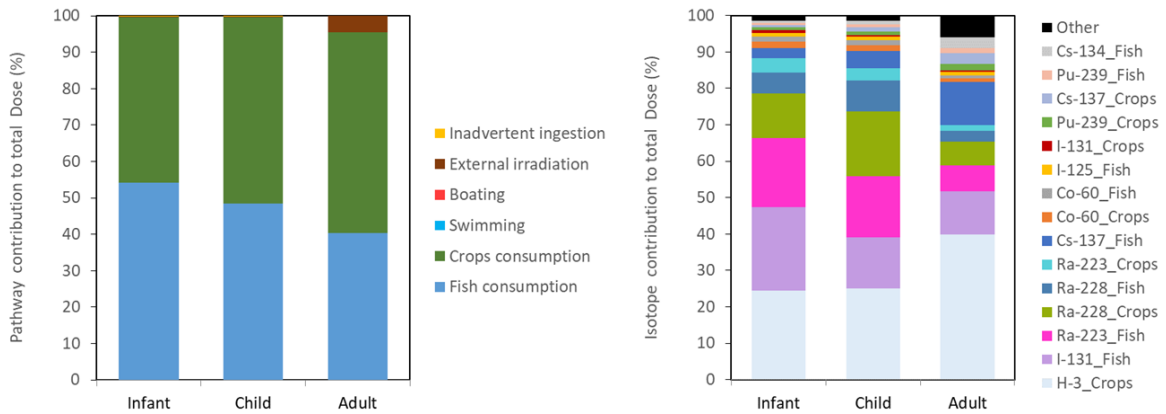


Figure 6-11. Contribution of exposure pathways (left) and isotope (right) contribution to the total annual dose under the liquid discharges scenario.

An extended presentation of results is presented in the appendixes, where it is included:

- Radionuclides concentration in the environment (Appendix B.3)
- The mean concentration of each isotope during the last year of operation in the soil of the cropland area (Appendix C.3.3)
- Total annual dose received by each age group for each isotope via each exposure pathway (Appendix C.3.3)

7 Conclusions

A radiological dose assessment is conducted for three different discharge types for the IFE division NUK: continuous atmospheric release, total acute atmospheric release and liquid discharge to the Nitelva river.

To perform the dose assessment the system was characterized, and the conceptual model described. After the mathematical model and parametrization of all required parameters, the model has been implemented in Ecolego to obtain the annual dose received to the three age scenarios of the reference group. Several exposition pathways have been considered including both internal and external radiation exposures.

The annual dose to the studied reference groups under the three discharge scenarios (continuous atmospheric emission, total acute atmospheric emission and liquid discharges to the Nitelva river) is estimated to be below 5 μSv (see Figure 7-1). In all cases, the dose received by infants is slightly higher than for adults as dose coefficients are generally higher as age decreases. There is only one exception in the case of the continuous atmospheric release, where the main exposure pathway is the ingestion of tritium via crops consumption. The decrease between the dose coefficient for infants and adults is lower than the increase of the amount of crops consumed by infants and adults (see Eq. 21 having into account that the concentration of crops is the same).

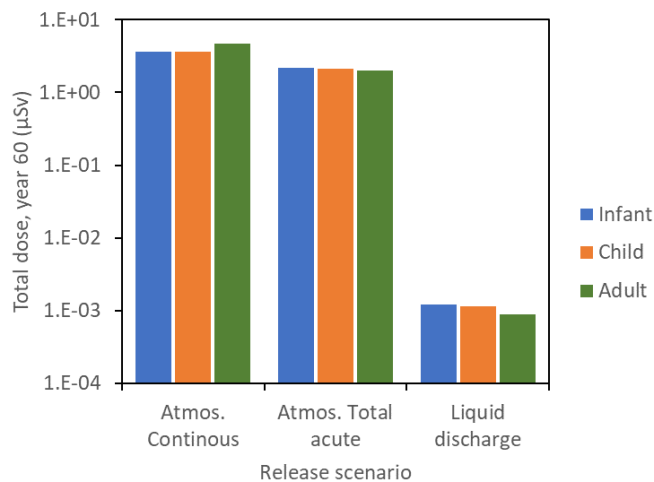


Figure 7-1. Dose received during the last year of operation (year 60) as a function of the reference group and the discharge scenario.

In all scenarios (Figure 6-2, Figure 6-6 and Figure 6-9) the dose increases during the operational period. This is because the exposure to crops consumption under the studied

conditions has a significant contribution to the total dose. Dose due to crops consumptions increases with time due to the accumulation of radionuclides in the environment. Detailed explanations are provided in the corresponding sections (See section 6.1 to 6.3).

Finally, it can be concluded that the emissions/discharges to the environment from the IFE-Kjeller NUK division are not producing a significant radiological impact to humans under the studied conditions nor to the environment.

References

- [1] "Institute for Energy Technology," *IFE*. <https://ife.no/en/front-page/>
- [2] NRPA, "Tillatelse TU13-36-2 etter forurensningsloven for håndtering av radioaktivt avfall og utslipp av radioaktive stoffer Institutt for energiteknikk, Kjeller," TU13-36–2, 2014.
- [3] A. Valls *et al.*, "Radiologisk konsekvensanalyse ved utslipp av radionuklider fra IFE - Task 1: Preliminary model definition and parametrization," Report code: 3571_DA-Kjeller_PR_T1_v1, 2022.
- [4] K. Smith and A. Punt, "Radiologisk konsekvensanalyse ved utslipp av radionuklider fra IFE - Task 3: Impact Assessment to the environment discharges," 3571_DA-Kjeller_PR_T1_v1, 2022.
- [5] Environment Agency, "Initial radiological assessment tool 2: summary," *GOV.UK*, 02 2023. <https://www.gov.uk/government/publications/initial-radiological-assessment-methodology/initial-radiological-assessment-tool-2-summary> (accessed Feb. 22, 2023).
- [6] Norsk KlimaServiceCenter, "Observasjoner og værstatistikk," *Norsk KlimaServiceCenter*. <https://seklima.met.no/observations/> (accessed Feb. 20, 2020).
- [7] Hjerpe, T., "Safety Case for the Operating License Application: Biosphere Models for Screening Purposes and Simplified Dose Calculations," POSIVA, Working report 2020-25., 2020.
- [8] IAEA, "Generic Models for Use in Assessing the Impact of Discharges of Radioactive Substances to the Environment.," 2001.
- [9] Bergström, U. and Barkefors, C., "Irrigation in dose assessments models.," SKB, R-04-26, 2004.
- [10] Hallberg, B., Aquilonius, K., Skoog, S., and Huutoniemi, T., "Radiologisk påverkan på växter och djur från Clink under drift.," SKB, R-10-53, 2011.
- [11] A. Valls and L. Duro, "Verification of Nagra's Biosphere Modelling Results Project 'Opalinus Clay,'" Swiss Federal Nuclear Safety Inspectorate ENSI, R-2225.2, 2012.
- [12] J. Kyllönen and V. Keto, "Biosphere Analysis – a Complementary Assessment of Dose Conversion Factors for the Olkiluoto Site," POSIVA, WR-2010-18, 2010.
- [13] Baumont G. *et al.*, "Guide méthodologique de gestion des sites potentiellement pollués par des substances radioactives.," IRSN, ASN, DGPR, INERIS, 2011.
- [14] G. A. Sehmel, "Particle and gas dry deposition: a review. *Atmospheric Environment*," vol. 14, no. 9, pp. 983–1011.
- [15] Hosseini *et al.*, "Application of an environmental impact assessment methodology to a site discharging low levels of radioactivity to a freshwater environment in Norway.," *Environ. Monit. Assess.*, no. 173, pp. 653–667, 2011.
- [16] Tröjbom, M., Grolander, S., Rensfelt, V., and Nordén, S., "Kd and CR used for transport calculations in the biosphere in SR-PSU.," SKB, R-13-01, 2013.
- [17] Liu *et al.*, "SR-Can Data and uncertainty assessment Matrix diffusivity and porosity in situ.," SKB, R-06-111, 2006.
- [18] IAEA, "Handbook of Parameter Values for the Prediction of Radionuclide Transfer in Terrestrial and Freshwater Environments.," 2010.
- [19] Shepperd, S., Sohlenius, G., Omberg, L.-G., Borgiel, M., Grolander, S., and Nordén, S., "Solid/liquid partition coefficients (Kd) and plant/soil concentration ratios (CR) for selected soils, tills and sediments at Forsmark.," SKB, R-11-24, 2011.
- [20] IAEA, "Handbook of Parameter Values for the Prediction of Radionuclide Transfer in Temperate Environments," 1994.
- [21] ICRP, "Guide for the Practical Application of the ICRP Human Respiratory Tract Model. ICRP Supporting Guidance 3. Ann.," 2002.

- [22] UNSCEAR, “Sources and effects of ionizing radiation: United Nations Scientific Committee on the Effects of Atomic Radiation: UNSCEAR 2000 report to the General Assembly, with scientific annexes.,” 2000.
- [23] ICRP, “Compendium of Dose Coefficients based on ICRP Publication 60.,” Publication 119, 2012.
- [24] JAERI, “Dose Coefficients for Radionuclides Produced in High Energy Proton Accelerator Facilities: Coefficients for Radionuclides not listed in ICRP Publications.,” 2002.
- [25] Government of Western Australia, “Managing naturally occurring radioactive material (NORM) in mining and mineral processing – guideline. NORM-V Dose assessment,” 2021.
- [26] Brudecki et al., “Age-dependent inhalation doses to members of the public from indoor short-lived radon progeny.,” *Radiat Environ Biophys*, no. 53, pp. 535–549, 2015.
- [27] ICRP, “Occupational Intakes of Radionuclides: Part 3.,” Publication 137, 2017.
- [28] EPA, “Federal Guidance Report No. 15 (FGR 15), External Exposure to Radionuclides in Air, Water and Soil.,” EPA 402-R-19-002, 2019.
- [29] IAEA, “Quantification of Radionuclide Transfer in Terrestrial and Freshwater Environments for Radiological Assessments.,” TECDOC-1616, 2019.
- [30] G. P. Friday, C. I. Cummins, and A. L. Schwartzman, “Radiological Bioconcentration Factors for Aquatic, Terrestrial, and Wetland Ecosystems at the Savannah River Site(U),” Technical Report 96–0231.

Appendix

A. Parameters

Appendix A includes the parametrization of both the physical and the dose model.

A.1 Physical model

This appendix includes the list of parameters and the corresponding values selected for the definition of the physical system. Firstly, those parameters that are not radionuclide specific are presented, either those that have a specific value and the ones that only depend on the compartment. The second part of this appendix is focused on the parameters that are radionuclide or element specific.

A.1.1 Non-radionuclide dependent data

Table A. 1. Non-radionuclide nor compartment dependent data for physical model.

Parameter	Unit	Value	Ref.
DepT ^{a,b}	m/s	0.001	[14]
BioT	kg/(m ² ·year)	2	[7]
r _{Sed}	kg/(m ² ·year)	0.072	[10]
S _s	kg/m ³	0.017	[7]
r _{Res}	kg/(m ² ·year)	0.047	[10]
r _{irr}	m ³ /(m ² ·year)	0.15	[9]
H _a	kg/m ³	0.00639	[6]

^a This value is 0.01 for iodine.

^b Noble gases, such as radon, krypton, or xenon, do not interact with other substances or surfaces, therefore their deposition value is set to zero.

Table A. 2. Compartment dependent data for physical model.

Compartment	Parameter	Unit	Value compartment #1	Value compartment #2	Ref.
River	Area	km ²	1.1	1.6	[3]
	h	m	2.0	1.25	[3]
	Q _v	m ³ /s	9	9	[15]
Top soil	Area	km ²	0.38	0.48	[3]

Compartment	Parameter	Unit	Value compartment #1	Value compartment #2	Ref.
	h	m	0.3	0.3	[7]
	ρ	kg/m ³	1626	1626	[16]
	por	-	0.36	0.36	[16]
	Wf	m/year	0.3	0.3	[7]
Deep soil	Area	km ²	0.38	0.48	[3]
	h	m	1	1	^a
	ρ	kg/m ³	2115	2115	[16]
	por	-	0.21	0.21	[16]
Top sediment	Area	km ²	1.1	1.6	[3]
	h	m	0.05	0.05	[16]
	ρ	kg/m ³	1587	1587	[7]
	por	-	0.42	0.42	[7]
Deep sediment	Area	km ²	1.1	1.6	[3]
	h	m	0.73	0.73	[10]
	ρ	kg/m ³	1390	1390	[7]
	por	-	0.41	0.41	[7]

^a Default value.

A.1.2 Radionuclide dependent data

Table A. 3. Diffusion coefficient for radionuclide *i* in free solution (D_i , m²/y).

Element	D_i (m ² /y)	Ref.	Element	D_i (m ² /y)	Ref.
Ac	1.0E-09	[7]	Pb	1.0E-09	[17]
Ag	1.7E-09	[7]	Po	1.0E-09	[17]
Ba	1.0E-09	[17]	Pu	1.0E-09	[7]
Bi	1.0E-09	[17]	Ra	8.9E-10	[7]
Br	1.0E-09	[17]	Rh	1.0E-09	[17]
Cd	7.2E-10	[17]	Rn	1.0E-09	[17]
Co	7.0E-10	[7]	Ru	1.0E-09	[17]
Cs	2.1E-09	[7]	Sc	1.0E-09	[17]
Eu	1.0E-09	[7]	Sn	1.0E-09	[7]

Element	D _i (m ² /y)	Ref.	Element	D _i (m ² /y)	Ref.
Gd	1.0E-09	[17]	Sr	7.9E-10	[7]
H	1.0E-09	[17]	Tb	1.0E-09	[17]
Hg	1.0E-09	[17]	Tc	1.0E-09	[7]
I	2.0E-09	[7]	Th	1.5E-10	[7]
Lu	1.0E-09	[17]	Tl	1.0E-09	[17]
Na	1.3E-09	[17]	Y	1.0E-9	[17]

Table A. 4. Distribution coefficient for radionuclide *i* in suspended solids (K_{dss} , m³/kg_{DW}).

Elements	K _{dss} (m ³ /kg _{DW})	Ref.	Elements	K _{dss} (m ³ /kg _{DW})	Ref.
Ac	15.6	[7]	Po	0.84	[7]
Ag	2.04	[7]	Pu	11.7	[7]
Ba	2.01	[7]	Ra	2.01	[7]
Bi	0.84	[7]	Rh	2.82	[7]
Cd	1.94	[7]	Rn	^a	
Co	1.94	[7]	Ru	2.82	[7]
Cs	27.7	[7]	Sc	8.93	[7]
H	^a		Sn	9.91	[7]
I	0.28	[7]	Tb	8.93	[7]
Lu	8.93	[7]	Th	25.4	[7]
Na	27.7	[7]	Tl	9.91	[7]
Pb	9.91	[7]			

^a Element not sorbed

Table A. 5. Distribution coefficients for radionuclide *i* in soils and sediments (K_d , m³/kg_{DW}).

Elements	K _d (m ³ /kg _{DW})			
	Top Soil	Deep Soil	Top Sed.	Deep Sed.
Ac	1.7E+00 [18]	1.7E+00 [18]	8.8E+01 [16]	7.2E+00 [7]
Ag	1.9E+00 [19]	4.7 E-01 [19]	2.8E+01 [16]	2.8E-01 [7]
Ba	9.6E-01 [19]	3.1E+00 [19]	3.2E+00 [16]	3.2E+00 [7]
Bi	7.6E+00 [19]	1.3E+02 [19]	5.0E+00 [18]	5.0E+00 [18]
Br	6.8E-02[19]	5.0E-02[19]	^b	^b
Cd	2.0E+00 [19]	1.7E+00 [19]	6.6E+01 [16]	6.6E+01 [7]
Co	4.2E+00 [19]	6.5E+01 [19]	1.6E+01 [16]	6.0E-01 [7]

Elements	Kd (m ³ /kg _{DW})			
	Top Soil	Deep Soil	Top Sed.	Deep Sed.
Cs	9.7E+01 [19]	3.7E+02 [19]	4.6E+01 [16]	1.2E+01 [7]
Eu	6.6E+00 [19]	9.2E+01 [19]	b	b
Gd	6.0E+00 [19]	9.6E+01 [19]	b	b
H	a	a	a	a
Hg	3.0E+00 [19]	1.7E+00 [19]	b	b
I	1.1E-01 [19]	0.24E-01 [19]	3.5E-01 [16]	7.8E-02 [7]
Lu	4.2E+00 [19]	5.0E+01 [19]	8.8E+01 [16]	2.5E+00 [7]
Na	2.0E-02 [19]	4.0E-02 [19]	4.6E+01 [16]	1.2E+01 [7]
Pb	1.1E+01 [19]	2.2E+02 [19]	1.5E+02 [16]	1.5E+02 [7]
Po	6.6E+00 [20]	1.5E+01 [16]	5.6E+01 [16]	5.6E+01 [16]
Pu	7.4E-01 [18]	1.1E+00 [18]	4.5E+00 [16]	3.6E+00 [7]
Ra	3.0E+00 [19]	1.1E+01 [19]	3.2E+00 [16]	1.1E+01 [7]
Rh	1.2E+00 [19]	3.1E+00 [19]	3.2E+01 [16]	3.2E+01 [7]
Rn	a	a	a	a
Ru	1.2E+00 [19]	3.1E+00 [19]	3.2E+01 [16]	3.2E+01 [7]
Sc	9.6E+00 [19]	1.0E+02 [19]	2.2E+02 [16]	2.2E+02 [7]
Sn	1.0E+01 [19]	1.1E+01 [19]	9.6E+00 [16]	9.6E+00 [7]
Sr	1.0E-01 [19]	5.1E-01 [19]	b	b
Tb	5.6E+00 [19]	9.8E+01 [19]	8.8E+00 [16]	2.5E+00 [7]
Tc	2.3E-04 [18]	1.1E+00 [7]		
Th	6.1E+00 [19]	9.1E+01 [19]	2.1E+02 [16]	1.5E+01 [7]
Tl	9.4E+00 [19]	3.7E+01 [19]	1.5E+02 [16]	1.5E+02 [7]
Y	4.4E+00 [19]	5.8E+01 [19]	b	b

^a Element not sorbed

^b Element not studied in the surface water model

A.2 Dose Model

The parameters used to calculate the dose due to the exposure of population to radionuclides via different pathway are presented in the following tables. As in the case of the parameters defining the physical system, parameters are classified as non-radionuclide dependents and parameters that depend on either the radionuclide or the element.

A.2.1 Non-radionuclide dependent data

Table A. 6. General, non-radionuclide dependent data for the dose model.

Parameter	Unit	Value	Ref.
t_h	d	14	[8]
α	m ² /kg	0.3	[8]
λ_w	d ⁻¹	0.05	[8]
$t_{e,crops}$	d	60	[8]

Table A. 7. Age-group dependent data for dose model.

Parameter	Unit	Infant	Child	Adult	Ref.
Of _C	-	1.0E-02	1.0E-02	1.7E-01	^a
Of _R	-	3.3E-01	3.3E-01	2.5E-01	^a
Of _S	-	0.0E+00	0.0E+00	1.4E-03	^a
Of _B	-	6.0E-03	6.0E-03	6.0E-03	^a
R _{inhC}	m ³ /h	2.2E-01	3.8E-01	1.5E+00	[21]
R _{inhR}	m ³ /h	2.9E-01	7.5E-01	1.0E+00	[21]
H _C	kg/y	4.5E+01	9.0E+01	1.4E+02	[22]
H _{fish}	kg/y	5.0E-01	1.0E+00	1.5E+00	^a
Q _{sol}	mg/d	1.0E+02	5.0E+01	4.0E+01	[13]

^a Internal Assumption

A.2.2 Radionuclide dependent data

Table A. 8. Dose coefficient for inhalation for radionuclide *i* for each age group (DC_{inh} , Sv/Bq).

Isotope	DC _{inh} (Sv/Bq)			Ref.
	Infant ^a	Child ^b	Adult	
Ac-227	2.0E-04	8.7E-05	7.2E-05	[23]
Bi-210	3.0E-07	1.3E-07	9.3E-08	[23]
Bi-211	4.6E-09	2.3E-09	1.6E-09	[24]
Bi-212	1.1E-07	4.4E-08	3.1E-08	[23]
Bi-214	6.1E-08	2.2E-08	1.4E-08	[23]
Br-82	3.0E-09	1.1E-09	6.3E-10	[23]
Cs-134	7.3E-09	5.3E-09	6.6E-09	[23]
Cs-135	9.9E-10	6.1E-10	6.9E-10	[23]
Cs-137	5.4E-09	3.7E-09	4.6E-09	[23]
Eu-152	1.0E-07	4.9E-08	4.2E-08	[23]
Eu-154	1.5E-07	6.5E-08	5.3E-08	[23]
Gd-153	1.2E-08	3.9E-09	2.1E-09	[23]
H-3	2.7E-10	8.2E-11	4.5E-11	[23]
Hg-203	7.9E-09	3.4E-09	2.4E-09	[23]
I-131	7.2E-08	1.9E-08	7.4E-09	[23]
Pb-210	3.7E-06	1.5E-06	1.1E-06	[23]
Pb-211	1.4E-09	4.1E-10	1.8E-10	[23]
Pb-212	1.2E-07	3.5E-08	1.8E-08	[23]
Pb-214	4.6E+08	1.9E+08	1.4E+08	[23]
Po-210	4.8E-06	1.3E-06	6.1E-07	[23]
Po-212	0.0E+00	0.0E+00	0.0E+00	[25]
Po-214	1.5E-14	5.2E-15	3.1E-15	[26]
Po-215	0.0E+00	0.0E+00	0.0E+00	[25]
Po-216	0.0E+00	0.0E+00	0.0E+00	[25]
Po-218	1.6E-08	7.9E-09	5.6E-09	[26]
Ra-223	2.1E-05	9.0E-06	4.0E-06	[23]
Ra-224	9.2E-06	4.4E-06	3.4E-06	[23]
Rn-219	4.4E-10	4.4E-10	4.4E-10	[27]
Rn-220	1.8E-10	1.8E-10	1.8E-10	[27]
Rn-222	4.8E-11	4.8E-11	4.8E-11	[27]

Isotope	DC _{inh} (Sv/Bq)			Ref.
	Infant ^a	Child ^b	Adult	
Sr-90	4.0E-07	1.8E-07	1.6E-07	[23]
Tb-160	2.5E-08	1.0E-08	7.0E-09	[23]
Tb-161	4.7E-09	1.9E-09	1.3E-09	[23]
Tc-99	2.5E-09	5.9E-10	2.9E-10	[23]
Th-227	3.0E-05	1.4E-05	1.0E-05	[23]
Th-228	1.1E-04	4.6E-05	3.2E-05	[23]
Tl-207	2.1E-11	6.0E-12	3.4E-12	[24]
Tl-208	2.8E-11	8.6E-12	4.5E-12	[24]
Y-90	8.8E-09	2.7E-09	1.5E-09	[23]

^a Values for one year old infants are selected.

^b Values for ten years old children are selected.

Table A. 9. Dose coefficient for ingestion for radionuclide *i* for each age group (DC_{ing}, Sv/Bq).

Isotope	DC _{ing} (Sv/Bq)			Ref.
	Infant ^a	Child ^b	Adult	
Ac-227	3.1E-06	1.5E-06	1.1E-06	[23]
Ac-228	2.8E-09	8.7E-10	4.3E-10	[23]
Ag-108	3.2E-11	8.6E-12	4.6E-12	[23]
Ag-108m	1.1E-08	4.3E-09	2.3E-09	[23]
Ag-110	1.4E-08	5.2E-09	2.8E-09	[23]
Ag-110m	1.4E-08	5.2E-09	2.8E-09	[23]
Ba-133	6.2E-09	4.6E-09	1.5E-09	[23]
Bi-210	9.7E-09	2.9E-09	1.3E-09	[23]
Bi-211	8.3E-11	2.3E-11	1.2E-11	[24]
Bi-212	1.8E-09	5.0E-10	2.6E-10	[23]
Bi-214	7.4E-10	2.1E-10	1.1E-10	[23]
Br-82	2.6E-09	9.5E-10	5.4E-10	[23]
Cd-109	9.5E-09	3.5E-09	2.0E-09	[23]
Co-60	2.7E-08	1.1E-08	3.4E-09	[23]
Cs-134	1.6E-08	1.4E-08	1.9E-08	[23]
Cs-135	2.3E-09	1.7E-09	2.0E-09	[23]
Cs-137	1.2E-08	1.0E-08	1.3E-08	[23]

Isotope	DC _{ing} (Sv/Bq)			Ref.
	Infant ^a	Child ^b	Adult	
Eu-152	7.4E-09	2.6E-09	1.4E-09	[23]
Eu-154	1.2E-08	4.1E-09	2.0E-09	[23]
Gd-153	1.8E-09	5.8E-10	2.7E-10	[23]
H-3	4.8E-11	2.3E-11	1.8E-11	[23]
I-125	5.7E-08	3.1E-08	1.5E-08	[23]
I-131	1.8E-07	5.2E-08	2.2E-08	[23]
Lu-177	3.9E-09	1.2E-09	5.3E-10	[23]
Lu-177m	1.1E-08	3.6E-09	1.7E-09	[23]
Na-22	1.5E-08	5.5E-09	3.2E-09	[23]
Pb-210	3.6E-06	1.9E-06	6.9E-07	[23]
Pb-211	1.4E-09	4.1E-10	1.8E-10	[23]
Pb-212	6.3E-08	2.0E-08	6.0E-09	[23]
Pb-214	1.0E-09	3.1E-10	1.4E-10	[23]
Po-210	8.8E-06	2.6E-06	1.2E-06	[23]
Po-212	0.0E+00	0.0E+00	0.0E+00	[25]
Po-214	0.0E+00	0.0E+00	0.0E+00	[25]
Po-215	0.0E+00	0.0E+00	0.0E+00	[25]
Po-216	0.0E+00	0.0E+00	0.0E+00	[25]
Pu-238	4.0E-07	2.4E-07	2.3E-07	[23]
Pu-239	4.2E-07	2.7E-07	2.5E-07	[23]
Pu-240	4.2E-07	2.7E-07	2.5E-07	[23]
Pu-242	4.0E-07	2.6E-07	2.4E-07	[23]
Ra-223	1.1E-06	4.5E-07	1.0E-07	[23]
Ra-224	6.6E-07	2.6E-07	6.5E-08	[23]
Ra-228	5.7E-06	3.9E-06	6.9E-07	[23]
Rh-106	9.7E-10	3.3E-10	1.6E-10	[23]
Rn-222	6.9E-10	6.9E-10	6.9E-10	[27]
Ru-106	4.9E-08	1.5E-08	7.0E-09	[23]
Sc-46	7.9E-09	2.9E-09	1.5E-09	[23]
Sn-113	5.0E-09	1.6E-09	7.3E-10	[23]
Sr-90	7.30E-08	6.0E-08	2.8E-08	[23]
Tb-161	5.3E-09	1.6E-09	7.2E-10	[23]

Isotope	DC _{ing} (Sv/Bq)			Ref.
	Infant ^a	Child ^b	Adult	
Tc-99	4.8E-09	1.3E-09	6.4E-10	[23]
Th-227	7E-08	2.3E-08	8.8E-09	[23]
Th-228	3.7E-07	1.4E-07	7.2E-08	[23]
Th-232	4.5E-07	2.9E-07	2.3E-07	[23]
Tl-207	4.9E-11	1.3E-11	7.1E-12	[24]
Tl-208	5.2E-11	1.5E-11	8.6E-12	[24]
Y-90	2.0E-08	5.9E-09	2.7E-09	[23]

^a Values for one year old infants are selected.

^b Values for ten years old children are selected.

Table A. 10. Dose coefficient for air submersion for radionuclide *i* for each age group (DC_{im,a}, Sv/s per Bq/m³).

Isotope	DC _{im,a} ((Sv/s)/(Bq/m ³))			Ref.
	Infant ^a	Child ^b	Adult	
Ac-227	6.8E-18	5.6E-18	4.2E-18	[28]
Bi-210	1.2E-15	1.1E-15	1.0E-15	[28]
Bi-211	2.6E-15	2.3E-15	2.0E-15	[28]
Bi-212	7.8E-15	7.1E-15	6.3E-15	[28]
Bi-214	8.8E-14	8.0E-14	7.2E-14	[28]
Br-82	1.5E-13	1.4E-13	1.2E-13	[28]
Cs-134	8.8E-14	8.0E-14	7.0E-14	[28]
Cs-135	1.4E-16	1.3E-16	1.2E-16	[28]
Cs-137	4.6E-16	4.3E-16	3.9E-16	[28]
Eu-152	6.7E-14	6.0E-14	5.3E-14	[28]
Eu-154	7.2E-14	6.5E-14	5.8E-14	[28]
Gd-153	4.1E-15	3.4E-15	2.8E-15	[28]
H-3	4.7E-20	4.3E-20	3.8E-20	[28]
Hg-203	1.3E-14	1.2E-14	1.0E-14	[28]
I-125	5.7E-16	4.4E-16	2.8E-16	[28]
I-131	2.2E-14	1.9E-14	1.7E-14	[28]
Pb-210	7.0E-17	5.3E-17	3.8E-17	[28]
Pb-211	5.1E-15	4.6E-15	4.1E-15	[28]
Pb-212	7.8E-15	6.8E-15	5.9E-15	[28]

Isotope	DC _{im,a} ((Sv/s)/(Bq/m ³))			Ref.
	Infant ^a	Child ^b	Adult	
Pb-214	1.4E-14	1.3E-14	1.1E-14	[28]
Po-210	5.5E-19	5.0E-19	4.4E-19	[28]
Po-212	0.0E+00	0.0E+00	0.0E+00	[28]
Po-214	4.7E-18	4.3E-18	3.8E-18	[28]
Po-215	9.7E-18	8.8E-18	7.7E-18	[28]
Po-216	8.7E-19	7.8E-19	6.9E-19	[28]
Ra-223	7.3E-15	6.4E-15	5.4E-15	[28]
Ra-224	5.7E-16	5.0E-16	4.4E-16	[28]
Rn-219	3.2E-15	2.9E-15	2.5E-15	[28]
Rn-220	3.5E-17	3.2E-17	2.8E-17	[28]
Rn-222	2.2E-17	2.0E-17	1.7E-17	[28]
Sr-90	1.7E-19	1.6E-19	1.4E-19	[28]
Tb-160	6.5E-14	5.8E-14	5.2E-14	[28]
Tb-161	1.5E-15	1.2E-15	9.5E-16	[28]
Tc-99	1.8E-16	1.6E-16	1.5E-16	[28]
Th-227	6.6E-15	5.8E-15	5.0E-15	[28]
Th-228	1.1E-16	9.2E-17	7.5E-17	[28]
Tl-207	1.8E-15	1.7E-15	1.5E-15	[28]
Tl-208	2.0E-13	1.8E-13	1.7E-13	[28]
Y-90	1.5E-18	1.4E-18	1.2E-18	[28]

^a Values for one year old infants are selected.

^b Values for ten years old children are selected.

Table A. 11. Dose coefficient for water immersion for radionuclide *i* for each age group (DC_{im,w}, Sv/s per Bq/m³).

Isotope	DC _{im,w} ((Sv/s)/(Bq/m ³))			Ref.
	Infant ^a	Child ^b	Adult	
Ac-227	1.2E-20	9.7E-21	6.9E-21	[28]
Ac-228	1.0E-16	9.4E-17	8.4E-17	[28]
Ag-108	2.7E-18	2.4E-18	2.2E-18	[28]
Ag-108m	1.9E-16	1.7E-16	1.5E-16	[28]
Ag-110	5.1E-18	4.6E-18	4.2E-18	[28]
Ag-110m	3.3E-16	3.0E-16	2.7E-16	[28]

Isotope	DC _{im,w} ((Sv/s)/(Bq/m ³))			Ref.
	Infant ^a	Child ^b	Adult	
Ba-133	4.2E-17	3.6E-17	3.2E-17	[28]
Bi-211	5.3E-18	4.6E-18	4.1E-18	[28]
Bi-212	1.3E-17	1.2E-17	1.1E-17	[28]
Cd-109	7.0E-19	5.5E-19	4.1E-19	[28]
Co-60	3.1E-16	2.8E-16	2.5E-16	[28]
Cs-134	1.8E-16	1.7E-16	1.5E-16	[28]
Cs-137	1.1E-19	1.1E-19	1.0E-19	[28]
H-3	2.8E-26	2.0E-26	6.2E-27	[28]
I-125	1.3E-18	9.4E-19	6.8E-19	[28]
I-131	4.4E-17	3.8E-17	3.4E-17	[28]
Lu-177	3.8E-18	3.2E-18	2.8E-18	[28]
Lu-177m	1.1E-16	9.4E-17	8.2E-17	[28]
Na-22	2.6E-16	2.4E-16	2.1E-16	[28]
Pb-211	7.9E-18	7.1E-18	6.3E-18	[28]
Pb-212	1.6E-17	1.3E-17	1.2E-17	[28]
Po-212	0.0E+00	0.0E+00	0.0E+00	[28]
Po-215	2.0E-20	1.8E-20	1.6E-20	[28]
Po-216	1.8E-21	1.7E-21	1.5E-21	[28]
Pu-238	1.6E-20	1.4E-20	6.6E-21	[28]
Pu-239	1.3E-20	1.1E-20	7.3E-21	[28]
Pu-240	1.6E-20	1.3E-20	6.5E-21	[28]
Pu-241	1.6E-22	1.2E-22	1.1E-22	[28]
Pu-242	2.3E-20	2.0E-20	1.3E-20	[28]
Ra-223	1.5E-17	1.2E-17	1.1E-17	[28]
Ra-224	1.2E-18	9.9E-19	8.6E-19	[28]
Ra-228	1.8E-20	1.5E-20	6.1E-21	[28]
Rh-106	3.4E-16	3.1E-16	2.7E-16	[28]
Rn-119	6.6E-18	5.7E-18	5.0E-18	[28]
Rn-220	7.3E-20	6.5E-20	5.7E-20	[28]
Ru-106	1.6E-24	1.3E-24	5.7E-25	[28]
Sc-46	2.4E-16	2.2E-16	2.0E-16	[28]
Sn-113	6.5E-18	5.5E-18	4.2E-18	[28]

Isotope	DC _{im,w} ((Sv/s)/(Bq/m ³))			Ref.
	Infant ^a	Child ^b	Adult	
Tb-161	2.5E-18	2.0E-18	1.6E-18	[28]
Th-227	1.3E-17	1.2E-17	1.0E-17	[28]
Th-228	2.2E-19	1.8E-19	1.5E-19	[28]
Th-230	4.5E-20	3.7E-20	2.8E-20	[28]
Th-232	2.6E-20	2.1E-20	1.5E-20	[28]
Tl-207	7.2E-19	6.7E-19	6.3E-19	[28]
Tl-208	4.3E-16	3.9E-16	3.6E-16	[28]

^a Values for one year old infants are selected.

^b Values for ten years old children are selected.

Table A. 12. Dose coefficient for exposure to ground deposits for radionuclide *i* for each age group (DC_{Ext}, Sv/s per Bq/m³).

Isotope	DC _{Ext} ((Sv/s)/(Bq/m ³))			Ref.
	Infant ^a	Child ^b	Adult	
Ac-227	2.2E-21	1.9E-21	1.6E-21	[28]
Ac-228	1.8E-17	1.7E-17	1.5E-17	[28]
Ag-108	1.2E-18	1.1E-18	1.0E-18	[28]
Ag-108m	3.4E-17	3.1E-17	2.8E-17	[28]
Ag-110	2.7E-18	2.4E-18	2.2E-18	[28]
Ag-110m	5.8E-17	5.2E-17	4.8E-17	[28]
Ba-133	7.7E-18	6.9E-18	6.2E-18	[28]
Bi-210	4.5E-19	4.1E-19	3.7E-19	[28]
Bi-211	9.9E-19	8.9E-19	8.0E-19	[28]
Bi-212	2.9E-18	2.6E-18	2.4E-18	[28]
Bi-214	3.1E-17	2.8E-17	2.6E-17	[28]
Br-82	5.5E-17	5.0E-17	4.6E-17	[28]
Co-60	5.1E-17	4.7E-17	4.3E-17	[28]
Cd-109	8.3E-20	6.9E-20	5.4E-20	[28]
Cs-134	3.3E-17	3.0E-17	2.7E-17	[28]
Cs-135	5.5E-20	5.0E-20	4.5E-20	[28]
Cs-137	1.7E-19	1.5E-19	1.4E-19	[28]
Eu-152	2.4E-17	2.2E-17	2.0E-17	[28]
Eu-154	2.6E-17	2.4E-17	2.1E-17	[28]

Isotope	DC _{Ext} ((Sv/s)/(Bq/m ³))			Ref.
	Infant ^a	Child ^b	Adult	
Gd-153	1.4E-18	1.1E-18	9.8E-19	[28]
H-3	2.2E-23	2.0E-23	1.9E-23	[28]
Hg-203	5.0E-18	4.5E-18	4.0E-18	[28]
I-125	1.1E-19	7.7E-20	5.4E-20	[28]
I-131	8.3E-18	7.4E-18	6.7E-18	[28]
Lu-177	7.9E-19	7.0E-19	6.3E-19	[28]
Lu-177m	2.0E-17	1.8E-17	1.6E-17	[28]
Na-22	4.6E-17	4.2E-17	3.8E-17	[28]
Pb-210	2.0E-20	1.5E-20	1.2E-20	[28]
Pb-211	1.9E-18	1.7E-18	1.6E-18	[28]
Pb-212	2.9E-18	2.6E-18	2.3E-18	[28]
Pb-214	5.4E-18	4.9E-18	4.4E-18	[28]
Po-210	2.1E-22	1.9E-22	1.7E-22	[28]
Po-212	0.0E+00	0.0E+00	0.0E+00	[28]
Po-214	1.8E-21	1.6E-21	1.4E-21	[28]
Po-215	3.8E-21	3.4E-21	3.0E-21	[28]
Po-216	3.2E-22	2.9E-22	2.7E-22	[28]
Pu-238	1.1E-21	8.8E-22	4.9E-22	[28]
Pu-239	1.6E-21	1.3E-21	1.1E-21	[28]
Pu-240	1.1E-21	8.7E-22	5.0E-22	[28]
Pu-242	2.5E-21	2.2E-21	1.7E-21	[28]
Ra-223	2.7E-18	2.4E-18	2.1E-18	[28]
Ra-224	2.2E-19	1.9E-19	1.7E-19	[28]
Ra-228	1.3E-21	1.0E-21	5.3E-22	[28]
Rh-106	6.9E-18	6.3E-18	5.7E-18	[28]
Rn-219	1.2E-18	1.1E-18	9.9E-19	[28]
Rn-220	1.3E-20	1.2E-20	1.1E-20	[28]
Rn-222	8.3E-21	7.4E-21	6.7E-21	[28]
Ru-106	5.6E-22	5.1E-22	4.7E-22	[28]
Sc-46	4.2E-17	3.8E-17	3.5E-17	[28]
Sn-113	1.4E-19	1.2E-19	1.1E-19	[28]
Sr-90	1.7E-19	1.6E-19	1.4E-19	[28]

Isotope	DC _{Ext} ((Sv/s)/(Bq/m ³))			Ref.
	Infant ^a	Child ^b	Adult	
Tb-160	2.3E-17	2.1E-17	1.9E-17	[28]
Tb-161	4.8E-19	4.1E-19	3.5E-19	[28]
Tc-99	6.58E-20	5.98E-20	5.46E-20	[28]
Th-227	2.5E-18	2.2E-18	2.0E-18	[28]
Th-228	3.8E-20	3.4E-20	3.0E-20	[28]
Th-232	3.4E-21	2.9E-21	2.3E-21	[28]
Tl-207	6.7E-19	6.1E-19	5.6E-19	[28]
Tl-208	6.6E-17	6.1E-17	5.6E-17	[28]
Y-90	1.5E-18	1.4E-18	1.2E-18	[28]

^a Values for one year old infants are selected.

^b Values for ten years old children are selected.

Table A. 13. Concentration factor for uptake of the radionuclide from soil by edible parts of crops for radionuclide *i* (F_v , Bq/kg plant tissue per Bq/kg dry soil) and equilibrium ratio of the concentration of radionuclide *i* in fish to its dissolved concentration in water, known as the bioaccumulation factor (B_{fish} , (Bq/kg)/(Bq/L)).

Elements	F_v (Bq/kg)	Ref.	B_{fish} ((Bq/kg)/(Bq/L))	Ref.
Ac	1.0E-03	[8]	1.5E+02	[29]
Ag	1.0E-02	[8]	1.1E+02	[29]
Ba	5.0E-02	[8]	4.7E+01	[29]
Bi	1.0E-01	[8]	1.0E+01	[20]
Br	4.0E-01	[8]	^b	
Cd	5.0E-01	[8]	4.0E+02	[29]
Co	8.0E-02	[8]	4.0E+02	[29]
Cs	4.0E-02	[8]	3.0E+03	[29]
Eu	2.0E-03	[8]	^b	
Gd	2.0E-03	[8]	^b	
H	0.0E+00	[18]	1.0E+00	[30]
Hg	3.0E-01	[8]	^b	
I	2.0E-02	[8]	6.5E+02	[29]
Lu	2.0E-03	[8]	1.6E+01	[29]
Na	5.0E-02	[8]	1.4E+02	[29]
Pb	2.0E-02	[8]	3.7E+02	[29]

Elements	F _v (Bq/kg)	Ref.	B _{fish} ((Bq/kg)/(Bq/L))	Ref.
Po	2.0E-03	[8]	3.6E+01	[29]
Pu	1.0E-03	[8]	1.9E+02	[29]
Ra	4.0E-02	[8]	2.1E+02	[29]
Rh	5.0E-02	[8]	1.4E+02	[29]
Rn	0.0E+00	[8]	a	
Ru	5.0E-02	[8]	1.4E+02	[29]
Sc	3.0E-03	[8]	9.3E+02	[29]
Sn	3.0E-01	[8]	3.7E+02	[29]
Sr	3.0E-01	[8]	b	
Tb	2.0E-03	[8]	7.5E+02	[29]
Tc	5.0E+00	[8]	b	
Th	1.0E-03	[8]	1.9E+02	[29]
Tl	2.0E+00	[8]	5.8E+02	[29]
Y	3.0E-03	[8]	b	

^a No data found for this element.

^b Isotope not used in surface water model, hence no value needed.

B. Environmental Results Data

This appendix is focused on presenting the radionuclide behaviour in the environment. In the following sections the evolution of the isotopic concentration in the different compartments of the studied system are presented.

It is worth mentioning that this model has not been built to study in detail the behaviour and transport of radionuclides in the environment but only as a mead to study the consequences to human from discharges. In order to have a more detailed calculation on the transport of radionuclides in the media, more complex models, such as reactive transport models, should be applied. Those models not only consider decay and main physical processes like sorption via the Kd but also chemistry evolution or changes in physical properties of the media.

B.1 Continuous atmospheric emission

The concentration of all isotopes in the aqueous phase and sorbed into the soils in the first and the last year of the operational period is presented in Table B. 1. To better show the evolution of the concentration of these isotopes in the media, the evolution of the sorbed concentration of the main isotopes contributing to the dose during the operational period are represented in Figure B. 1. It can be observed that the concentration of all isotopes increases along the period, but this has not a significant impact to the environment.

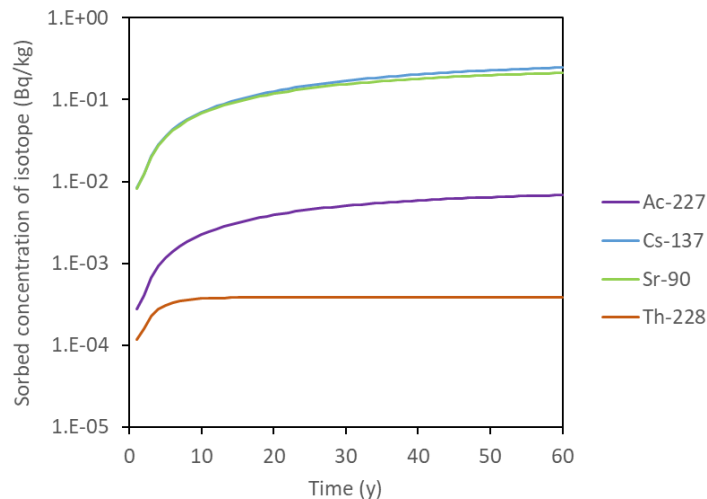


Figure B. 1. Evolution of the concentration sorbed in the soils during the operational period under the continuous atmospheric emission scenario.

The differences observed in the evolution of each isotope is the results of the mix between all processes included in the model such as the transferences, sorption, decay, etc. As an example, Figure B. 2 shows the evolution of the concentration of different isotopes of the same element, i.e. caesium. Note, that as they are isotopes of the same element, its behaviour in the environment is the same in terms of transferences between compartments, sorption in the soils, etc. In addition, any of them is daughter of another isotope present in the study that may affect its behaviour. This means that the only effect observed in the figure is related with their half-life. Note that Cs-134 ($T_{1/2} = 2.1$ y) achieves a steady state in less than 10 years. On the contrary, the concentration of Cs-135 ($T_{1/2} = 2.3 \cdot 10^6$ y) and Cs-137 ($T_{1/2} = 30$ y) with longer half-lives, keeps increasing during the whole period.

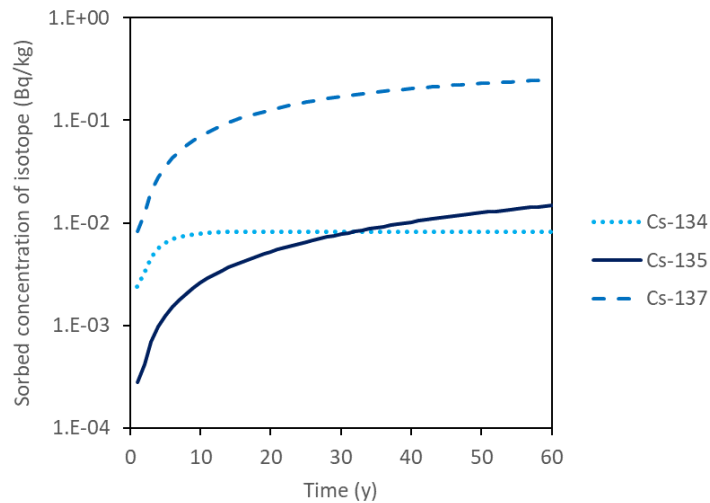


Figure B. 2. Evolution of the sorbed concentration of caesium isotopes in the soils during the operational period under the continuous atmospheric emission scenario.

Table B. 1. Mean concentration values in top soil compartment for the first and last simulation year.

Isotope	Top Soil 1			
	Aqueous concentration (Bq/m ³)		Sorbed concentration (Bq/kg)	
	Year 1	Year 60	Year 1	Year 60
Ac-227	8.1E-05	4.0E-03	1.4E-04	6.8E-03
Ac-228	7.8E-08	1.3E-06	1.3E-07	2.2E-06
Bi-210	0.0E+00	0.0E+00	0.0E+00	0.0E+00
Bi-211	1.4E-05	9.0E-04	1.1E-04	6.8E-03
Bi-212	8.3E-06	5.1E-05	6.3E-05	3.9E-04
Bi-214	0.0E+00	0.0E+00	0.0E+00	0.0E+00

Isotope	Top Soil 1			
	Aqueous concentration (Bq/m ³)		Sorbed concentration (Bq/kg)	
	Year 1	Year 60	Year 1	Year 60
Br-82	2.4E-02	2.4E-02	1.6E-03	1.6E-03
Cs-134	1.3E-05	8.5E-05	1.2E-03	8.2E-03
Cs-135	1.4E-06	1.5E-04	1.4E-04	1.5E-02
Cs-137	4.3E-05	2.6E-03	4.1E-03	2.5E-01
Eu-152	1.0E-04	3.7E-03	6.8E-04	2.4E-02
Eu-154	2.0E-04	5.0E-03	1.4E-03	3.3E-02
Gd-153	1.6E-05	4.4E-05	9.9E-05	2.6E-04
H-3	0.0E+00	0.0E+00	0.0E+00	0.0E+00
Hg-203	1.3E-07	1.7E-07	4.0E-07	5.1E-07
Pb-210	0.0E+00	0.0E+00	0.0E+00	0.0E+00
Pb-211	9.9E-06	6.2E-04	1.1E-04	6.8E-03
Pb-212	5.8E-06	3.5E-05	6.3E-05	3.9E-04
Pb-214	0.0E+00	0.0E+00	0.0E+00	0.0E+00
Po-210	0.0E+00	0.0E+00	0.0E+00	0.0E+00
Po-212	6.1E-06	3.7E-05	4.1E-05	2.5E-04
Po-214	0.0E+00	0.0E+00	0.0E+00	0.0E+00
Po-215	1.6E-05	1.0E-03	1.1E-04	6.8E-03
Po-216	9.6E-06	5.9E-05	6.4E-05	3.9E-04
Po-218	0.0E+00	0.0E+00	0.0E+00	0.0E+00
Ra-223	3.6E-05	2.3E-03	1.1E-04	6.8E-03
Ra-224	2.1E-05	1.3E-04	6.4E-05	3.9E-04
Ra-228	4.4E-08	7.5E-07	1.3E-07	2.2E-06
Rn-219	3.1E-01	2.0E+01	0.0E+00	0.0E+00
Rn-220	1.8E-01	1.1E+00	0.0E+00	0.0E+00
Rn-222	0.0E+00	0.0E+00	0.0E+00	0.0E+00
Sr-90	4.1E-02	2.1E+00	4.1E-03	2.1E-01
Tb-160	9.9E-06	1.4E-05	5.5E-05	8.0E-05
Tb-161	1.3E-06	1.4E-06	7.3E-06	7.6E-06
Tc-99	1.6E-01	3.7E-01	3.6E-05	8.6E-05
Th-227	2.0E-05	1.1E-03	1.2E-04	6.8E-03
Th-228	1.0E-05	6.3E-05	6.1E-05	3.8E-04
Tl-207	1.2E-05	7.2E-04	1.1E-04	6.8E-03
Tl-208	2.4E-06	1.5E-05	2.3E-05	1.4E-04
Y-90	9.2E-04	4.8E-02	4.0E-03	2.1E-01

B.2 Total acute atmospheric emission

The concentration of all isotopes in the aqueous phase and sorbed into the soils in the first and the last year of the operational period is presented in Table B. 2. To better show the evolution of the concentration of these isotopes in the media, the sorbed concentration of the main isotopes contributing to the dose are represented in Figure B. 3. It can be observed that the concentration of all isotopes increases along the period, but this has not a significant impact to the environment. The evolution of each isotope is the mix between all processes included in the model such as the transferences, sorption, decay, etc.

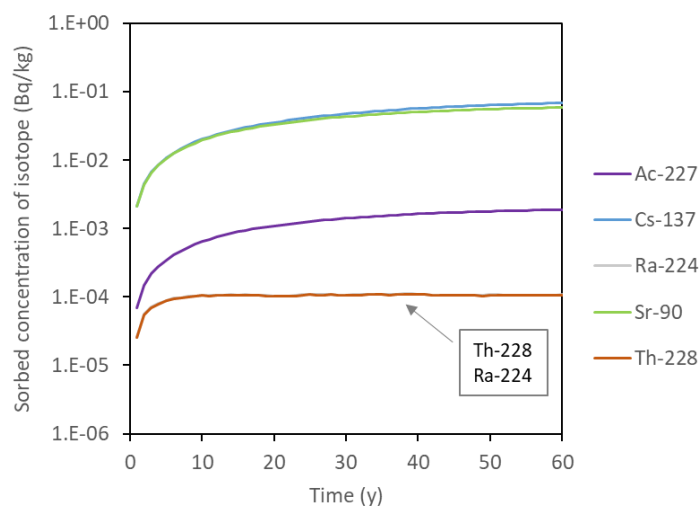


Figure B. 3. Evolution of the concentration sorbed in the soils during the operational period under the continuous atmospheric emission scenario.

Table B. 2. Mean concentration values in top soil compartment for the first and last simulation year.

Isotope	Top Soil 1			
	Aqueous concentration (Bq/m ³)		Sorbed concentration (Bq/kg)	
	Year 1	Year 60	Year 1	Year 60
Ac-227	4.1E-05	1.1E-03	7.1E-05	1.9E-03
Ac-228	3.8E-08	3.6E-07	6.8E-08	6.2E-07
Bi-210	0.0E+00	0.0E+00	0.0E+00	0.0E+00
Bi-211	9.3E-06	2.5E-04	6.3E-05	1.9E-03
Bi-212	3.3E-06	1.4E-05	3.1E-05	1.1E-04
Bi-214	0.0E+00	0.0E+00	0.0E+00	0.0E+00
Br-82	2.5E-10	6.9E-03	4.2E-04	4.7E-04

Isotope	Top Soil 1			
	Aqueous concentration (Bq/m ³)		Sorbed concentration (Bq/kg)	
	Year 1	Year 60	Year 1	Year 60
Cs-134	5.3E-06	2.4E-05	6.1E-04	2.3E-03
Cs-135	7.5E-07	4.2E-05	7.2E-05	4.1E-03
Cs-137	2.2E-05	7.1E-04	2.1E-03	6.9E-02
Eu-152	5.2E-05	1.0E-03	3.5E-04	6.7E-03
Eu-154	1.0E-04	1.4E-03	7.0E-04	9.0E-03
Gd-153	4.2E-06	1.2E-05	4.5E-05	7.5E-05
H-3	0.0E+00	0.0E+00	0.0E+00	0.0E+00
Hg-203	1.1E-09	5.0E-08	1.3E-07	1.5E-07
Pb-210	0.0E+00	0.0E+00	0.0E+00	0.0E+00
Pb-211	6.4E-06	1.7E-04	6.3E-05	1.9E-03
Pb-212	2.3E-06	9.8E-06	3.1E-05	1.1E-04
Pb-214	0.0E+00	0.0E+00	0.0E+00	0.0E+00
Po-210	0.0E+00	0.0E+00	0.0E+00	0.0E+00
Po-212	2.5E-06	1.0E-05	2.0E-05	6.9E-05
Po-214	0.0E+00	0.0E+00	0.0E+00	0.0E+00
Po-215	1.1E-05	2.9E-04	6.3E-05	1.9E-03
Po-216	3.8E-06	1.6E-05	3.1E-05	1.1E-04
Po-218	0.0E+00	0.0E+00	0.0E+00	0.0E+00
Ra-223	2.3E-05	6.3E-04	6.3E-05	1.9E-03
Ra-224	8.4E-06	3.6E-05	3.1E-05	1.1E-04
Ra-228	2.1E-08	2.1E-07	6.8E-08	6.2E-07
Rn-219	2.0E-01	5.5E+00	0.0E+00	0.0E+00
Rn-220	7.3E-02	3.1E-01	0.0E+00	0.0E+00
Rn-222	0.0E+00	0.0E+00	0.0E+00	0.0E+00
Sr-90	2.1E-02	5.9E-01	2.1E-03	5.9E-02
Tb-160	3.9E-07	4.1E-06	2.0E-05	2.3E-05
Tb-161	3.0E-15	3.9E-07	2.0E-06	2.2E-06
Tc-99	3.2E-02	1.1E-01	1.6E-05	2.5E-05
Th-227	1.2E-05	3.1E-04	6.6E-05	1.9E-03
Th-228	4.1E-06	1.7E-05	3.0E-05	1.1E-04
Tl-207	7.5E-06	2.0E-04	6.3E-05	1.9E-03
Tl-208	9.7E-07	4.1E-06	1.1E-05	3.9E-05
Y-90	4.8E-04	1.3E-02	2.1E-03	5.9E-02

B.3 Liquid discharges

The concentration of all isotopes in the aqueous phase and sorbed into the soils, the sediments as well as the concentration in the river in the first and the last year of the operational period is presented in several tables: Table B. 3 to Table B. 5. To better show the evolution of the concentration of these isotopes in the media, the sorbed concentration of the main isotopes contributing to the dose into soils and sediments are represented in Figure B. 4. It can be observed that the concentration of all isotopes increases along the period, but this has not a significant impact to the environment. The evolution of each isotope is the mix between all processes included in the model such as the transferences, sorption, decay, etc.

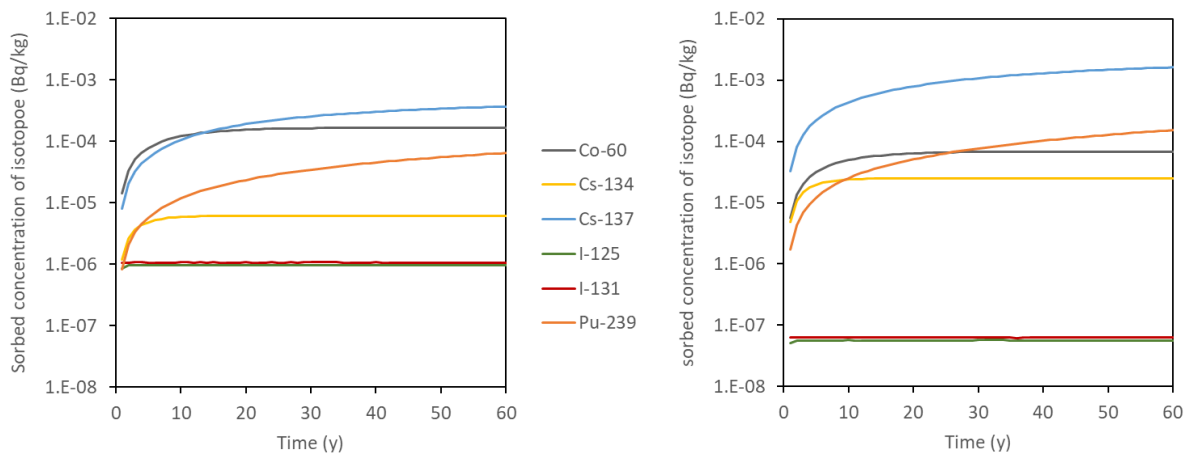


Figure B. 4. Evolution of the concentration sorbed in the soils (left) and sediments (right) during the operational period under the continuous atmospheric emission scenario.

Table B. 3. Mean aqueous concentration (Bq/m³) values in different compartments for the first and last simulation year.

Isotope	Aqueous concentration (Bq/m ³)					
	Top Sediment 1		Top Sediment 2		Top Soil 2	
	Year 1	Year 60	Year 1	Year 60	Year 1	Year 60
Ac-228	2.6E-09	2.1E-07	2.6E-09	2.1E-07	3.1E-07	6.1E-06
Ag-108	4.1E-09	3.5E-07	4.1E-09	3.5E-07	1.4E-07	1.1E-05
Ag-108m	4.1E-09	3.5E-07	4.1E-09	3.5E-07	1.4E-07	1.1E-05
Ag-110	5.7E-10	1.2E-09	5.6E-10	1.2E-09	2.0E-08	4.3E-08
Ag-110m	5.7E-10	1.2E-09	5.6E-10	1.2E-09	2.0E-08	4.3E-08
Bi-211	5.4E-08	5.4E-08	4.7E-08	4.7E-08	8.5E-08	8.5E-08

Isotope	Aqueous concentration (Bq/m ³)					
	Top Sediment 1		Top Sediment 2		Top Soil 2	
	Year 1	Year 60	Year 1	Year 60	Year 1	Year 60
Bi-212	6.5E-09	3.6E-06	7.3E-09	3.6E-06	8.8E-09	1.3E-06
Cd-109	8.2E-09	2.8E-08	8.1E-09	2.8E-08	6.7E-07	2.3E-06
Co-60	3.5E-07	4.3E-06	3.5E-07	4.3E-06	3.4E-06	4.0E-05
Cs-134	1.1E-07	5.4E-07	1.0E-07	5.3E-07	1.2E-08	6.3E-08
Cs-137	7.1E-07	3.5E-05	7.0E-07	3.5E-05	8.4E-08	3.8E-06
H-3	1.8E-06	4.7E-05	2.8E-06	7.5E-05	3.4E+02	4.3E+02
I-125	1.4E-07	1.6E-07	1.4E-07	1.6E-07	7.7E-06	8.6E-06
I-131	1.8E-07	1.8E-07	1.5E-07	1.5E-07	9.7E-06	9.7E-06
Lu-177	1.6E-08	1.6E-08	1.3E-08	1.3E-08	2.1E-07	2.1E-07
Lu-177m	6.0E-12	9.8E-12	5.9E-12	9.7E-12	7.6E-11	1.2E-10
Pb-211	1.8E-09	1.8E-09	1.6E-09	1.6E-09	5.9E-08	5.9E-08
Pb-212	2.2E-10	1.2E-07	2.4E-10	1.2E-07	6.0E-09	9.2E-07
Po-212	3.7E-10	2.1E-07	4.2E-10	2.0E-07	6.5E-09	9.9E-07
Po-215	4.8E-09	4.8E-09	4.1E-09	4.1E-09	9.8E-08	9.8E-08
Po-216	5.8E-10	3.2E-07	6.5E-10	3.2E-07	1.0E-08	1.5E-06
Pu-238	5.1E-09	3.6E-07	5.0E-09	3.6E-07	1.5E-08	9.5E-07
Pu-239	3.8E-07	3.4E-05	3.8E-07	3.4E-05	1.1E-06	8.8E-05
Pu-240	3.8E-08	3.4E-06	3.8E-08	3.4E-06	1.1E-07	8.8E-06
Pu-242	2.5E-09	2.3E-07	2.5E-09	2.3E-07	7.4E-09	5.9E-07
Ra-223	8.4E-08	8.4E-08	7.2E-08	7.2E-08	2.2E-07	2.2E-07
Ra-224	1.0E-08	5.6E-06	1.1E-08	5.6E-06	2.2E-08	3.4E-06
Ra-228	7.1E-08	5.9E-06	7.0E-08	5.8E-06	1.8E-07	3.5E-06
Rh-106	7.7E-09	2.2E-08	7.6E-09	2.2E-08	3.6E-07	1.0E-06
Rn-219	5.9E-04	5.9E-04	5.1E-04	5.1E-04	1.9E-03	1.9E-03
Rn-220	7.2E-05	3.9E-02	8.0E-05	3.9E-02	1.9E-04	2.9E-02
Ru-106	7.7E-09	2.2E-08	7.6E-09	2.2E-08	3.6E-07	1.0E-06
Sc-46	1.7E-12	2.0E-12	1.6E-12	2.0E-12	2.3E-11	2.8E-11
Sn-113	5.1E-09	7.0E-09	4.9E-09	6.9E-09	2.7E-09	3.7E-09
Th-228	1.6E-10	8.5E-08	1.8E-10	8.5E-08	1.1E-08	1.7E-06
Th-232	9.9E-10	8.8E-08	9.7E-10	8.8E-08	9.0E-09	7.2E-07
Tl-207	1.8E-09	1.8E-09	1.6E-09	1.6E-09	6.9E-08	6.9E-08
Tl-208	7.8E-11	4.3E-08	8.7E-11	4.3E-08	2.5E-09	3.9E-07

Table B. 4. Mean aqueous concentration (Bq/m³) in river compartments for the first and last simulation year.

Isotope	Aqueous concentration (Bq/m ³)			
	River 1		River 2	
	Year 1	Year 60	Year 1	Year 60
Ac-228	1.0E-04	1.0E-04	1.1E-04	1.1E-04
Ag-108	5.7E-05	5.7E-05	5.7E-05	5.7E-05
Ag-108m	5.7E-05	5.7E-05	5.7E-05	5.7E-05
Ag-110	1.1E-05	1.1E-05	1.1E-05	1.1E-05
Ag-110m	1.1E-05	1.1E-05	1.1E-05	1.1E-05
Bi-211	1.9E-03	1.9E-03	1.7E-03	1.7E-03
Bi-212	6.0E-06	6.0E-06	5.4E-06	5.4E-06
Cd-109	3.4E-04	3.4E-04	3.4E-04	3.4E-04
Co-60	3.1E-03	3.1E-03	3.1E-03	3.1E-03
Cs-134	2.8E-04	2.8E-04	2.8E-04	2.8E-04
Cs-137	1.7E-03	1.7E-03	1.7E-03	1.7E-03
H-3	5.7E+01	5.7E+01	5.7E+01	5.7E+01
I-125	5.5E-04	5.5E-04	5.4E-04	5.4E-04
I-131	4.6E-03	4.6E-03	3.8E-03	3.8E-03
Lu-177	4.4E-03	4.4E-03	3.5E-03	3.5E-03
Lu-177m	1.1E-07	1.1E-07	1.1E-07	1.1E-07
Pb-211	1.9E-03	1.9E-03	1.7E-03	1.7E-03
Pb-212	6.1E-06	6.1E-06	5.4E-06	5.4E-06
Po-212	3.9E-06	3.9E-06	3.5E-06	3.5E-06
Po-215	2.0E-03	2.0E-03	1.7E-03	1.7E-03
Po-216	7.5E-06	7.5E-06	5.3E-06	5.3E-06
Pu-238	2.3E-06	2.3E-06	2.3E-06	2.3E-06
Pu-239	1.7E-04	1.7E-04	1.7E-04	1.7E-04
Pu-240	1.7E-05	1.7E-05	1.7E-05	1.7E-05
Pu-242	1.1E-06	1.1E-06	1.1E-06	1.1E-06
Ra-223	2.0E-03	2.0E-03	1.7E-03	1.7E-03
Ra-224	7.5E-06	7.5E-06	5.3E-06	5.3E-06
Ra-228	1.1E-04	1.1E-04	1.1E-04	1.1E-04
Rh-106	1.1E-04	1.1E-04	1.1E-04	1.1E-04
Rn-219	2.0E-03	2.0E-03	1.7E-03	1.7E-03
Rn-220	7.5E-06	7.5E-06	5.3E-06	5.3E-06
Ru-106	1.1E-04	1.1E-04	1.1E-04	1.1E-04
Sc-46	1.1E-07	1.1E-07	1.1E-07	1.1E-07
Sn-113	1.1E-05	1.1E-05	1.1E-05	1.1E-05
Th-228	2.8E-07	2.8E-07	5.6E-07	5.7E-07
Th-232	1.1E-05	1.1E-05	1.1E-05	1.1E-05

Isotope	Aqueous concentration (Bq/m ³)			
	River 1		River 2	
	Year 1	Year 60	Year 1	Year 60
TI-207	1.9E-03	1.9E-03	1.7E-03	1.7E-03
TI-208	2.2E-06	2.2E-06	2.0E-06	2.0E-06

Table B. 5. Mean sorbed concentration (Bq/kg) values in different compartments for the first and last simulation year.

Isotope	Sorbed concentration (Bq/kg)					
	Top Sediment 1		Top Sediment 2		Top Soil 2	
	Year 1	Year 60	Year 1	Year 60	Year 1	Year 60
Ac-228	2.3E-07	1.9E-05	2.3E-07	1.9E-05	5.3E-07	1.0E-05
Ag-108	1.2E-07	9.9E-06	1.1E-07	9.9E-06	2.8E-07	2.1E-05
Ag-108m	1.2E-07	9.9E-06	1.1E-07	9.9E-06	2.8E-07	2.1E-05
Ag-110	1.6E-08	3.4E-08	1.6E-08	3.4E-08	3.8E-08	8.2E-08
Ag-110m	1.6E-08	3.4E-08	1.6E-08	3.4E-08	3.8E-08	8.2E-08
Bi-211	2.7E-07	2.7E-07	2.3E-07	2.3E-07	6.5E-07	6.5E-07
Bi-212	3.3E-08	1.8E-05	3.6E-08	1.8E-05	6.7E-08	1.0E-05
Cd-109	5.4E-07	1.8E-06	5.3E-07	1.8E-06	1.3E-06	4.5E-06
Co-60	5.7E-06	6.9E-05	5.6E-06	6.8E-05	1.4E-05	1.7E-04
Cs-134	4.8E-06	2.5E-05	4.7E-06	2.5E-05	1.2E-06	6.1E-06
Cs-137	3.3E-05	1.6E-03	3.2E-05	1.6E-03	8.1E-06	3.7E-04
H-3	0.0E+00	0.0E+00	0.0E+00	0.0E+00	0.0E+00	0.0E+00
I-125	5.0E-08	5.7E-08	4.9E-08	5.5E-08	8.5E-07	9.5E-07
I-131	6.4E-08	6.4E-08	5.2E-08	5.2E-08	1.1E-06	1.1E-06
Lu-177	1.4E-06	1.4E-06	1.1E-06	1.1E-06	8.7E-07	8.7E-07
Lu-177m	5.3E-10	8.7E-10	5.2E-10	8.5E-10	3.2E-10	5.2E-10
Pb-211	2.7E-07	2.7E-07	2.3E-07	2.3E-07	6.5E-07	6.5E-07
Pb-212	3.3E-08	1.8E-05	3.6E-08	1.8E-05	6.7E-08	1.0E-05
Po-212	2.1E-08	1.1E-05	2.3E-08	1.1E-05	4.3E-08	6.5E-06
Po-215	2.7E-07	2.7E-07	2.3E-07	2.3E-07	6.5E-07	6.5E-07
Po-216	3.3E-08	1.8E-05	3.6E-08	1.8E-05	6.7E-08	1.0E-05
Pu-238	2.3E-08	1.6E-06	2.2E-08	1.6E-06	1.1E-08	7.0E-07
Pu-239	1.7E-06	1.5E-04	1.7E-06	1.5E-04	8.2E-07	6.5E-05
Pu-240	1.7E-07	1.5E-05	1.7E-07	1.5E-05	8.2E-08	6.5E-06
Pu-242	1.1E-08	1.0E-06	1.1E-08	1.0E-06	5.5E-09	4.3E-07
Ra-223	2.7E-07	2.7E-07	2.3E-07	2.3E-07	6.5E-07	6.5E-07
Ra-224	3.3E-08	1.8E-05	3.6E-08	1.8E-05	6.7E-08	1.0E-05
Ra-228	2.3E-07	1.9E-05	2.2E-07	1.9E-05	5.3E-07	1.0E-05

Isotope	Sorbed concentration (Bq/kg)					
	Top Sediment 1		Top Sediment 2		Top Soil 2	
	Year 1	Year 60	Year 1	Year 60	Year 1	Year 60
Rh-106	2.5E-07	7.0E-07	2.4E-07	7.0E-07	4.3E-07	1.2E-06
Rn-219	0.0E+00	0.0E+00	0.0E+00	0.0E+00	0.0E+00	0.0E+00
Rn-220	0.0E+00	0.0E+00	0.0E+00	0.0E+00	0.0E+00	0.0E+00
Ru-106	2.5E-07	7.0E-07	2.4E-07	7.0E-07	4.3E-07	1.2E-06
Sc-46	3.6E-10	4.5E-10	3.5E-10	4.4E-10	2.2E-10	2.7E-10
Sn-113	4.9E-08	6.8E-08	4.7E-08	6.6E-08	2.7E-08	3.7E-08
Th-228	3.3E-08	1.8E-05	3.7E-08	1.8E-05	6.8E-08	1.0E-05
Th-232	2.1E-07	1.9E-05	2.0E-07	1.8E-05	5.5E-08	4.4E-06
Tl-207	2.7E-07	2.7E-07	2.3E-07	2.3E-07	6.5E-07	6.5E-07
Tl-208	1.2E-08	6.4E-06	1.3E-08	6.4E-06	2.4E-08	3.6E-06

C. Dose Results, Additional Data

This appendix is focused on presenting additional results than those presented in the report. It includes detailed results from the preliminary dose assessment carried out with the IRAT tool (see Appendix C.1), as well as the results from the AERMOD and Ecolego models (see Appendix C.2 and C.3, respectively).

Note that the isotopic concentration in different compartments of the environment obtained by Ecolego are presented in Appendix B.

C.1 Preliminary Dose Assessment

The following tables include the results from the preliminary dose assessment performed with the IRAT tool. Note that it is presented the contribution of each isotope in the selected exposure group scenario to the total dose. In each case, radionuclides selected for the detailed dose assessment in Ecolego are highlighted in bold.

Note that IRAT Tool has pre-defined scenarios that are not the same as those defined in this project, so that, slightly differences could be observed between the IRAT results and the results obtained with Ecolego.

Table C. 1. IRAT results of isotope contribution to dose received from atmosphere. Isotopes highlighted in bold are those selected for the final assessment.

Isotope	Contribution (%)	Isotope	Contribution (%)
H-3	5.8E+01	Zn-65	5.1E-02
Rn-222^a	2.5E+01	Ra-226	3.9E-02
Sr-90	3.4E+00	I-131	3.2E-02
Cs-137	3.3E+00	Ba-140 ^e	3.0E-02
Ac-225	2.1E+00	Eu-155	1.9E-02
Ra-223^b	1.9E+00	I-129	1.5E-02
Th-227^c	1.3E+00	Kr-85	1.4E-02
Eu-154	1.0E+00	Pb-210	1.3E-02
Tc-99	9.0E-01	Ce-144	1.2E-02
Cs-134	8.7E-01	Th-230	1.1E-02
Eu-152	5.5E-01	Ru-106	1.1E-02
Br-82	5.2E-01	Na-22	7.7E-03

Isotope	Contribution (%)	Isotope	Contribution (%)
Other beta/gamma emitting nuclides^d	3.3E-01	Ni-63	4.6E-03
Th-232	6.5E-02	C-14	3.0E-03
Ag-110m	5.3E-02		

^a Rn-222 has been used to assess Cs-135, Cs-137, Rn-220 and Rn-222.

^b Ra-223 has been used to assess Ra-224 and Ra-228.

^c Th-227 has been used to assess Th-228.

^d Other beta/gamma emitting nuclides stands for Gd-153, Tb-160, Tb-161 and Hg-203.

^e Ba-140 has been used to assess Ba-133

Table C. 2. IRAT results of isotope contribution to dose received from surface water based on angling family. Isotopes highlighted in bold are those selected for the final assessment.

Isotope	Contribution (%)	Isotope	Contribution (%)
Co-60	4.6E+01	Fe-59	2.0E-02
Pu-239	1.5E+01	Sb-125 ^f	1.0E-02
Cs-137	1.2E+01	Ru-103	1.0E-02
H-3	9.8E+00	U-234	1.0E-02
Ra-223^a	4.8E+00	U-238	1.0E-02
Cs-134	3.6E+00	Ba-140 ^g	1.0E-02
I-131	2.3E+00	Ce-144	5.0E-03
Other beta/gamma-emitting nuclides^b	1.8E+00	Co-57	5.0E-03
Pu-240	1.5E+00	Ac-225 ^h	4.0E-03
Ag-110m^c	1.4E+00	Zr-95	3.0E-03
Lu-177^d	2.7E-01	Cr-51	2.0E-03
Th-232	2.2E-01	Ce-141	2.0E-03
Pu-238	1.9E-01	Th-230	2.0E-03
Ru-106	1.2E-01	U-235	1.0E-03
Pu-242	1.0E-01	Cu-244	4.0E-04
Zn-65	8.0E-02	Np-237	1.0E-04
I-125	8.0E-02	Pb-212	1.0E-04
Th-227 ^e	7.0E-02	Am-243	3.0E-05
Am-241	6.0E-02	Cu-242	2.0E-05
Co-58	6.0E-02	Ni-63	2.0E-05

Isotope	Contribution (%)	Isotope	Contribution (%)
Sr-90	5.6E-02	Cu-243	2.0E-05
Pu-241	4.0E-02	Tc-99	3.0E-07
Mn-54	2.9E-02	Am-242	2.0E-07
La-140	3.0E-02		

^a Ra-223 has been used to assess Ra-223, Ra-224 and Ra-228.

^b Other beta/gamma emitting nuclides stands for Sc-46, Cd-109 and Sn-113.

^c Ag-110m has been used to assess Ag-108 and Ag-110m.

^d Lu-177 has been used to assess Lu-177 and Lu-177m.

^e Th-227 has been used to assess Th-227, Th-228, U-236 and U-238.

^f Sb-125 has been used assess Sb-122, Sb-124 and Sb-125.

^g Ba-140 has been used to assess Ba-133 and Ba-140.

^h Ac-225 has been used to assess Ac-225 and Ac-227.

Table C. 3. IRAT Results of isotope contribution to dose received from irrigated food. Isotopes highlighted in bold are those selected for the final assessment.

Isotope	Contribution (%)	Isotope	Contribution (%)
H-3	5.5E+01	Pu-238	0.0E+00
Ra-223^a	2.3E+01	Fe-59	0.0E+00
I-131	1.0E+01	Pu-242	0.0E+00
Co-60	6.0E+00	Pu-241	0.0E+00
Cs-137	3.1E+00	Cu-244	0.0E+00
Other beta/gamma-emitting nuclides^b	4.8E-01	Ce-144	0.0E+00
I-125	4.6E-01	Mn-54	0.0E+00
Cs-134	3.8E-01	Zr-95	0.0E+00
Pu-239	3.1E-01	Co-58	0.0E+00
Am-241	7.0E-02	La-140	0.0E+00
Th-230	6.0E-02	Np-237	0.0E+00
U-234	5.0E-02	Co-57	0.0E+00
U-238	5.0E-02	Ru-103	0.0E+00
Th-232	5.0E-02	Ni-63	0.0E+00
Ru-106	4.0E-02	Cu-242	0.0E+00
Lu-177 ^c	3.0E-02	Pb-212	0.0E+00
Pu-240	3.0E-02	Ce-141	0.0E+00
Ag-110m ^d	3.0E-02	Cu-243	0.0E+00

Isotope	Contribution (%)	Isotope	Contribution (%)
Th-227 ^e	2.0E-02	Cr-51	0.0E+00
Zn-65	9.3E-03	Tc-99	0.0E+00
U-235	1.0E-02	Am-243	0.0E+00
Ac-225 ^f	1.0E-02	Am-242	0.0E+00
Sb-125 ^g	1.0E-02	Sr-90	0.0E+00
Ba-140 ^h	0.0E+00		

a Ra-223 has been used to assess Ra-223, Ra-224 and Ra-228.

b Other beta/gamma emitting nuclides stands for Sc-46, Cd-109 and Sn-113.

c Lu-177 has been used to assess Lu-177 and Lu-177m.

d Ag-110m has been used to assess Ag-108 and Ag-110m.

e Th-227 has been used to assess Th-227 and Th-228.

f Ac-225 has been used to assess Ac-225 and Ac-227.

g Sb-125 has been used assess Sb-122, Sb-124 and Sb-125.

h Ba-140 has been used to assess Ba-133 and Ba-140.

C.2 Atmospheric dispersion model

This appendix provides the atmospheric concentration calculated with AERMOD. The maximum atmospheric concentration (Bq/m³) on croplands and residential areas is presented.

For each location, values for the two different release scenarios are provided: a constant value for each month of the year in the case of a constant release, and a single value for the day of release for the total acute release.

Table C. 4. Maximum atmospheric concentration (Bq/m³) over croplands area. A monthly value is provided for the continuous release, and a single value for the total acute release.

Isotope	Maximum atmospheric concentration (Bq/m ³) - Croplands area						
	Continuous release						
	Jan	Feb	Mar	Apr	May	Jun	July
H-3	7.1E+00	6.2E+00	7.1E+00	6.2E+00	4.0E+00	3.0E+00	2.3E+00
Sr-90	1.1E-04	9.3E-05	1.1E-04	9.2E-05	6.0E-05	4.5E-05	3.5E-05
Gd-153	3.5E-06	3.1E-06	3.5E-06	3.1E-06	2.0E-06	1.5E-06	1.2E-06
Tb-160	3.5E-06	3.1E-06	3.5E-06	3.1E-06	2.0E-06	1.5E-06	1.2E-06
Tb-161	3.5E-06	3.1E-06	3.5E-06	3.1E-06	2.0E-06	1.5E-06	1.2E-06
Hg-203	3.5E-08	3.1E-08	3.5E-08	3.1E-08	2.0E-08	1.5E-08	1.2E-08
Rn-220	1.8E-02	1.5E-02	1.8E-02	1.5E-02	1.0E-02	7.5E-03	5.8E-03

Isotope	Maximum atmospheric concentration (Bq/m ³) - Croplands area						
	Continuous release						
	Jan	Feb	Mar	Apr	May	Jun	July
Cs-135	3.5E-06	3.1E-06	3.5E-06	3.1E-06	2.0E-06	1.5E-06	1.2E-06
Cs-137	1.1E-04	9.3E-05	1.1E-04	9.3E-05	6.0E-05	4.5E-05	3.5E-05
Rn-222	3.5E-03	3.1E-03	3.5E-03	3.1E-03	2.0E-03	1.5E-03	1.2E-03
Ac-227	3.5E-06	3.1E-06	3.5E-06	3.1E-06	2.0E-06	1.5E-06	1.2E-06
Ra-224	3.5E-06	3.1E-06	3.5E-06	3.1E-06	2.0E-06	1.5E-06	1.2E-06
Ra-228	3.5E-09	3.1E-09	3.5E-09	3.1E-09	2.0E-09	1.5E-09	1.2E-09
Th-228	1.8E-06	1.5E-06	1.8E-06	1.5E-06	1.0E-06	7.5E-07	5.8E-07
Eu-154	3.5E-05	3.1E-05	3.5E-05	3.1E-05	2.0E-05	1.5E-05	1.2E-05
Tc-99	3.5E-06	3.1E-06	3.5E-06	3.1E-06	2.0E-06	1.5E-06	1.2E-06
Cs-134	3.5E-05	3.1E-05	3.5E-05	3.1E-05	2.0E-05	1.5E-05	1.2E-05
Eu-152	1.8E-05	1.5E-05	1.8E-05	1.5E-05	1.0E-05	7.5E-06	5.8E-06
Br-82	3.5E-03	3.1E-03	3.5E-03	3.1E-03	2.0E-03	1.5E-03	1.2E-03
Isotope	Continuous release					Total acute release	
	Aug	Sept	Oct	Nov	Dec		
H-3	5.2E+00	4.7E+00	6.1E+00	6.4E+00	8.1E+00	5.5E+02	
Sr-90	7.8E-05	7.1E-05	9.0E-05	9.7E-05	1.2E-04	8.2E-03	
Gd-153	2.6E-06	2.3E-06	3.0E-06	3.2E-06	4.1E-06	2.7E-04	
Tb-160	2.6E-06	2.3E-06	3.0E-06	3.2E-06	4.1E-06	2.7E-04	
Tb-161	2.6E-06	2.3E-06	3.0E-06	3.2E-06	4.1E-06	2.7E-04	
Hg-203	2.6E-08	2.3E-08	3.0E-08	3.2E-08	4.1E-08	2.7E-06	
Rn-220	1.3E-02	1.2E-02	1.5E-02	1.6E-02	2.0E-02	1.4E+00	
Cs-135	2.6E-06	2.3E-06	3.0E-06	3.2E-06	4.1E-06	2.7E-04	
Cs-137	7.8E-05	7.0E-05	9.1E-05	9.7E-05	1.2E-04	8.2E-03	
Rn-222	2.6E-03	2.3E-03	3.0E-03	3.2E-03	4.1E-03	2.7E-01	
Ac-227	2.6E-06	2.3E-06	3.0E-06	3.2E-06	4.1E-06	2.7E-04	
Ra-224	2.6E-06	2.3E-06	3.0E-06	3.2E-06	4.1E-06	2.7E-04	
Ra-228	2.6E-09	2.3E-09	3.0E-09	3.2E-09	4.1E-09	2.7E-07	
Th-228	1.3E-06	1.2E-06	1.5E-06	1.6E-06	2.0E-06	1.4E-04	
Eu-154	2.6E-05	2.3E-05	3.0E-05	3.2E-05	4.1E-05	2.7E-03	
Tc-99	2.6E-06	2.3E-06	3.0E-06	3.2E-06	4.1E-06	2.7E-04	
Cs-134	2.6E-05	2.3E-05	3.0E-05	3.2E-05	4.1E-05	2.7E-03	

Isotope	Maximum atmospheric concentration (Bq/m ³) - Croplands area						
	Continuous release						
	Jan	Feb	Mar	Apr	May	Jun	July
Eu-152	1.3E-05	1.2E-05	1.5E-05	1.6E-05	2.0E-05	1.4E-03	
Br-82	2.6E-03	2.3E-03	3.0E-03	3.2E-03	4.1E-03	2.7E-01	

Table C. 5. Maximum atmospheric concentration (Bq/m³) over residential area. A monthly value is provided for the continuous release, and a single value for the total acute release.

Isotope	Maximum atmospheric concentration (Bq/m ³) - Residential area						
	Continuous release						
	Jan	Feb	Mar	Apr	May	Jun	July
H-3	5.8E+00	5.2E+00	4.5E+00	4.8E+00	4.7E-01	7.5E-01	4.2E+00
Sr-90	8.7E-05	7.7E-05	6.7E-05	7.3E-05	6.6E-06	1.1E-05	6.2E-05
Gd-153	2.9E-06	2.6E-06	2.2E-06	2.4E-06	2.3E-07	3.8E-07	2.1E-06
Tb-160	2.9E-06	2.6E-06	2.2E-06	2.4E-06	2.3E-07	3.8E-07	2.1E-06
Tb-161	2.9E-06	2.6E-06	2.2E-06	2.4E-06	2.3E-07	3.8E-07	2.1E-06
Hg-203	2.9E-08	2.6E-08	2.2E-08	2.4E-08	2.3E-09	3.8E-09	2.1E-08
Rn-220	1.5E-02	1.3E-02	1.1E-02	1.2E-02	1.2E-03	1.9E-03	1.0E-02
Cs-135	2.9E-06	2.6E-06	2.2E-06	2.4E-06	2.3E-07	3.8E-07	2.1E-06
Cs-137	8.8E-05	7.7E-05	6.7E-05	7.3E-05	7.0E-06	1.1E-05	6.2E-05
Rn-222	2.9E-03	2.6E-03	2.2E-03	2.4E-03	2.3E-04	3.8E-04	2.1E-03
Ac-227	2.9E-06	2.6E-06	2.2E-06	2.4E-06	2.3E-07	3.8E-07	2.1E-06
Ra-224	2.9E-06	2.6E-06	2.2E-06	2.4E-06	2.3E-07	3.8E-07	2.1E-06
Ra-228	2.9E-09	2.6E-09	2.2E-09	2.4E-09	2.3E-10	3.8E-10	2.1E-09
Th-228	1.5E-06	1.3E-06	1.1E-06	1.2E-06	1.2E-07	1.9E-07	1.0E-06
Eu-154	2.9E-05	2.6E-05	2.2E-05	2.4E-05	2.3E-06	3.8E-06	2.1E-05
Tc-99	2.9E-06	2.6E-06	2.2E-06	2.4E-06	2.3E-07	3.8E-07	2.1E-06
Cs-134	2.9E-05	2.6E-05	2.2E-05	2.4E-05	2.3E-06	3.8E-06	2.1E-05
Eu-152	1.5E-05	1.3E-05	1.1E-05	1.2E-05	1.2E-06	1.9E-06	1.0E-05
Br-82	2.9E-03	2.6E-03	2.2E-03	2.4E-03	2.3E-04	3.8E-04	2.1E-03
Isotope	Continuous release					Total acute release	
	Aug	Sept	Oct	Nov	Dec		
H-3	3.0E+00	1.6E+00	5.0E+00	4.2E+00	6.5E+00	1.7E+03	
Sr-90	4.5E-05	2.4E-05	7.5E-05	6.3E-05	9.7E-05	2.5E-02	
Gd-153	1.5E-06	7.9E-07	2.5E-06	2.1E-06	3.2E-06	8.3E-04	

Isotope	Maximum atmospheric concentration (Bq/m ³) - Residential area Continuous release						
	Jan	Feb	Mar	Apr	May	Jun	July
Tb-160	1.5E-06	7.9E-07	2.5E-06	2.1E-06	3.2E-06	8.3E-04	
Tb-161	1.5E-06	7.9E-07	2.5E-06	2.1E-06	3.2E-06	8.3E-04	
Hg-203	1.5E-08	7.9E-09	2.5E-08	2.1E-08	3.2E-08	8.3E-06	
Rn-220	7.6E-03	3.9E-03	1.2E-02	1.1E-02	1.6E-02	4.2E+00	
Cs-135	1.5E-06	7.9E-07	2.5E-06	2.1E-06	3.2E-06	8.3E-04	
Cs-137	4.6E-05	2.4E-05	7.5E-05	6.3E-05	9.7E-05	2.5E-02	
Rn-222	1.5E-03	7.9E-04	2.5E-03	2.1E-03	3.2E-03	8.3E-01	
Ac-227	1.5E-06	7.9E-07	2.5E-06	2.1E-06	3.2E-06	8.3E-04	
Ra-224	1.5E-06	7.9E-07	2.5E-06	2.1E-06	3.2E-06	8.3E-04	
Ra-228	1.5E-09	7.9E-10	2.5E-09	2.1E-09	3.2E-09	8.3E-07	
Th-228	7.6E-07	3.9E-07	1.2E-06	1.1E-06	1.6E-06	4.2E-04	
Eu-154	1.5E-05	7.9E-06	2.5E-05	2.1E-05	3.2E-05	8.3E-03	
Tc-99	1.5E-06	7.9E-07	2.5E-06	2.1E-06	3.2E-06	8.3E-04	
Cs-134	1.5E-05	7.9E-06	2.5E-05	2.1E-05	3.2E-05	8.3E-03	
Eu-152	7.6E-06	3.9E-06	1.2E-05	1.1E-05	1.6E-05	4.2E-03	
Br-82	1.5E-03	7.9E-04	2.5E-03	2.1E-03	3.2E-03	8.3E-01	

C.3 Dose Assessment

This section contains the detailed results of the three different radionuclide release scenarios. For each scenario and reference group, a table including the annual dose estimated for the last year of operation due to the exposure to each radionuclide and each exposure pathway is presented.

Each table also provides the total dose received to the exposure of each nuclide through all pathways, the dose due to the exposure to each exposure pathway considering the contribution of all isotopes and the total dose received is also presented.

C.3.1 Continuous atmospheric emission

Table C. 6. Total dose received per pathway and isotope during the last simulation year for infants.

Isotope	Exposure pathway dose - Infants (µSv/y)					Total dose per isotope
	Plume immersion	Inhalation	Ing. Crops	Ext. irradiation	Inad. Ingestion	
Ac-227	1.4E-10	3.3E-01	1.9E-01	4.8E-09	7.7E-04	5.2E-01
Ac-228	0.0E+00	0.0E+00	9.8E-27	1.3E-08	2.3E-10	1.3E-08
Bi-210	0.0E+00	0.0E+00	0.0E+00	0.0E+00	0.0E+00	0.0E+00
Bi-211	0.0E+00	0.0E+00	0.0E+00	2.2E-06	2.1E-08	2.2E-06
Bi-212	0.0E+00	0.0E+00	1.6E-106	3.6E-07	2.5E-08	3.9E-07
Bi-214	0.0E+00	0.0E+00	0.0E+00	0.0E+00	0.0E+00	0.0E+00
Br-82	3.1E-03	5.0E-03	2.2E-05	2.9E-05	1.5E-07	8.2E-03
Cs-134	1.8E-05	1.2E-04	9.8E-03	8.9E-05	4.8E-06	1.0E-02
Cs-135	3.0E-09	1.6E-06	2.0E-04	2.6E-07	1.2E-06	2.0E-04
Cs-137	2.9E-07	2.7E-04	2.7E-02	1.4E-05	1.1E-04	2.7E-02
Eu-152	6.9E-06	8.3E-04	2.3E-03	1.9E-04	6.6E-06	3.3E-03
Eu-154	1.5E-05	2.5E-03	7.3E-03	2.8E-04	1.4E-05	1.0E-02
Gd-153	8.7E-08	2.0E-05	1.0E-04	1.2E-07	1.7E-08	1.2E-04
H-3	2.0E-06	9.0E-01	1.7E+00	0.0E+00	0.0E+00	2.6E+00
Hg-203	2.7E-09	1.3E-07	1.4E-06	8.4E-10	6.7E-11	1.5E-06
Pb-210	0.0E+00	0.0E+00	0.0E+00	0.0E+00	0.0E+00	0.0E+00
Pb-211	0.0E+00	0.0E+00	5.2E-174	4.3E-06	3.5E-07	4.7E-06
Pb-212	0.0E+00	0.0E+00	6.7E-15	3.7E-07	8.9E-07	1.3E-06
Pb-214	0.0E+00	0.0E+00	0.0E+00	0.0E+00	0.0E+00	0.0E+00
Po-210	0.0E+00	0.0E+00	0.0E+00	0.0E+00	0.0E+00	0.0E+00
Po-212	0.0E+00	0.0E+00	0.0E+00	0.0E+00	0.0E+00	0.0E+00
Po-214	0.0E+00	0.0E+00	0.0E+00	0.0E+00	0.0E+00	0.0E+00
Po-215	0.0E+00	0.0E+00	0.0E+00	8.4E-09	0.0E+00	8.4E-09
Po-216	0.0E+00	0.0E+00	0.0E+00	4.1E-11	0.0E+00	4.1E-11
Po-218	0.0E+00	0.0E+00	0.0E+00	0.0E+00	0.0E+00	0.0E+00
Ra-223	0.0E+00	0.0E+00	5.8E-03	6.0E-06	2.7E-04	6.1E-03
Ra-224	1.2E-08	1.5E-02	6.6E-04	2.7E-08	9.3E-06	1.6E-02
Ra-228	1.7E-13	1.7E-05	3.7E-04	9.3E-13	4.7E-07	3.9E-04
Rn-219	0.0E+00	0.0E+00	0.0E+00	2.7E-06	0.0E+00	2.7E-06
Rn-220	3.6E-06	1.5E-03	0.0E+00	1.7E-09	0.0E+00	1.5E-03
Rn-222	4.3E-07	7.7E-05	0.0E+00	0.0E+00	0.0E+00	7.7E-05
Sr-90	1.1E-10	2.0E-02	3.4E-01	1.2E-05	5.7E-04	3.6E-01
Tb-160	1.3E-06	4.1E-05	4.6E-04	6.1E-07	2.9E-08	5.0E-04
Tb-161	3.1E-08	7.8E-06	2.8E-05	1.2E-09	1.5E-09	3.6E-05
Tc-99	3.6E-09	4.2E-06	3.9E-04	4.7E-09	1.5E-08	3.9E-04

Isotope	Exposure pathway dose - Infants (µSv/y)					Total dose per isotope
	Plume immersion	Inhalation	Ing. Crops	Ext. irradiation	Inad. Ingestion	
Th-227	0.0E+00	0.0E+00	1.3E-05	5.5E-06	1.7E-05	3.6E-05
Th-228	1.1E-09	9.1E-02	1.1E-02	4.8E-09	5.2E-06	1.0E-01
Tl-207	0.0E+00	0.0E+00	0.0E+00	1.5E-06	1.2E-08	1.5E-06
Tl-208	0.0E+00	0.0E+00	0.0E+00	3.0E-06	2.6E-10	3.0E-06
Y-90	0.0E+00	0.0E+00	1.5E-05	1.0E-04	1.6E-04	2.8E-04
Total dose per pathway	3.2E-03	1.4E+00	2.3E+00	7.4E-04	1.9E-03	3.7E+00

Table C. 7. Total dose received per pathway and isotope during the last simulation year for children.

Isotope	Exposure pathway - Children (µSv/y)					Total dose per isotope
	Plume immersion	Inhalation	Ing. Crops	Ext. irradiation	Inad. Ingestion	
Ac-227	1.2E-10	3.7E-01	1.8E-01	4.2E-09	1.9E-04	5.5E-01
Ac-228	0.0E+00	0.0E+00	6.1E-27	1.2E-08	3.6E-11	1.2E-08
Bi-210	0.0E+00	0.0E+00	0.0E+00	0.0E+00	0.0E+00	0.0E+00
Bi-211	0.0E+00	0.0E+00	0.0E+00	2.0E-06	2.9E-09	2.0E-06
Bi-212	0.0E+00	0.0E+00	8.8E-107	3.3E-07	3.5E-09	3.3E-07
Bi-214	0.0E+00	0.0E+00	0.0E+00	0.0E+00	0.0E+00	0.0E+00
Br-82	2.8E-03	4.7E-03	1.6E-05	2.7E-05	2.8E-08	7.5E-03
Cs-134	1.7E-05	2.3E-04	1.7E-02	8.0E-05	2.1E-06	1.7E-02
Cs-135	2.7E-09	2.6E-06	3.0E-04	2.4E-07	4.6E-07	3.0E-04
Cs-137	2.7E-07	4.7E-04	4.6E-02	1.2E-05	4.5E-05	4.7E-02
Eu-152	6.2E-06	1.0E-03	1.6E-03	1.7E-04	1.2E-06	2.8E-03
Eu-154	1.3E-05	2.8E-03	5.0E-03	2.5E-04	2.4E-06	8.1E-03
Gd-153	7.2E-08	1.7E-05	6.5E-05	9.9E-08	2.8E-09	8.2E-05
H-3	1.8E-06	7.0E-01	1.6E+00	0.0E+00	0.0E+00	2.3E+00
Hg-203	2.4E-09	1.4E-07	8.8E-07	7.5E-10	1.0E-11	1.0E-06
Pb-210	0.0E+00	0.0E+00	0.0E+00	0.0E+00	0.0E+00	0.0E+00
Pb-211	0.0E+00	0.0E+00	3.0E-174	3.9E-06	5.1E-08	4.0E-06
Pb-212	0.0E+00	0.0E+00	4.3E-15	3.3E-07	1.4E-07	4.7E-07
Pb-214	0.0E+00	0.0E+00	0.0E+00	0.0E+00	0.0E+00	0.0E+00
Po-210	0.0E+00	0.0E+00	0.0E+00	0.0E+00	0.0E+00	0.0E+00
Po-212	0.0E+00	0.0E+00	0.0E+00	0.0E+00	0.0E+00	0.0E+00
Po-214	0.0E+00	0.0E+00	0.0E+00	0.0E+00	0.0E+00	0.0E+00
Po-215	0.0E+00	0.0E+00	0.0E+00	7.5E-09	0.0E+00	7.5E-09
Po-216	0.0E+00	0.0E+00	0.0E+00	3.7E-11	0.0E+00	3.7E-11

Isotope	Exposure pathway - Children (µSv/y)					Total dose per isotope
	Plume immersion	Inhalation	Ing. Crops	Ext. irradiation	Inad. Ingestion	
Po-218	0.0E+00	0.0E+00	0.0E+00	0.0E+00	0.0E+00	0.0E+00
Ra-223	0.0E+00	0.0E+00	4.7E-03	5.4E-06	5.6E-05	4.8E-03
Ra-224	1.0E-08	1.9E-02	5.2E-04	2.4E-08	1.8E-06	2.0E-02
Ra-228	1.2E-13	2.0E-05	5.0E-04	7.4E-13	1.6E-07	5.2E-04
Rn-219	0.0E+00	0.0E+00	0.0E+00	2.5E-06	0.0E+00	2.5E-06
Rn-220	3.3E-06	3.8E-03	0.0E+00	1.5E-09	0.0E+00	3.8E-03
Rn-222	3.9E-07	2.0E-04	0.0E+00	0.0E+00	0.0E+00	2.0E-04
Sr-90	9.7E-11	2.3E-02	5.6E-01	1.1E-05	2.3E-04	5.8E-01
Tb-160	1.2E-06	4.2E-05	3.0E-04	5.6E-07	4.8E-09	3.4E-04
Tb-161	2.5E-08	8.1E-06	1.7E-05	1.2E-09	2.2E-10	2.5E-05
Tc-99	3.3E-09	2.5E-06	2.1E-04	4.2E-09	2.0E-09	2.1E-04
Th-227	0.0E+00	0.0E+00	8.4E-06	5.0E-06	2.9E-06	1.6E-05
Th-228	9.6E-10	9.8E-02	8.3E-03	4.2E-09	9.8E-07	1.1E-01
Tl-207	0.0E+00	0.0E+00	0.0E+00	1.4E-06	1.6E-09	1.4E-06
Tl-208	0.0E+00	0.0E+00	0.0E+00	2.8E-06	3.8E-11	2.8E-06
Y-90	0.0E+00	0.0E+00	8.9E-06	9.4E-05	2.3E-05	1.3E-04
Total dose per pathway	2.9E-03	1.2E+00	2.4E+00	6.7E-04	5.6E-04	3.6E+00

Table C. 8. Total dose received per pathway and isotope during the last simulation year for adults.

Isotope	Exposure pathway dose - Adults (µSv/y)					Total dose per isotope
	Plume immersion	Inhalation	Ing. Crops	Ext. irradiation	Inad. Ingestion	
Ac-227	1.3E-10	7.5E-01	2.1E-01	6.0E-08	1.1E-04	9.6E-01
Ac-228	0.0E+00	0.0E+00	4.7E-27	1.9E-07	1.4E-11	1.9E-07
Bi-210	0.0E+00	0.0E+00	0.0E+00	0.0E+00	0.0E+00	0.0E+00
Bi-211	0.0E+00	0.0E+00	0.0E+00	3.0E-05	1.2E-09	3.0E-05
Bi-212	0.0E+00	0.0E+00	7.1E-107	5.1E-06	1.5E-09	5.1E-06
Bi-214	0.0E+00	0.0E+00	0.0E+00	0.0E+00	0.0E+00	0.0E+00
Br-82	3.6E-03	6.5E-03	1.4E-05	4.1E-04	1.3E-08	1.1E-02
Cs-134	2.1E-05	6.8E-04	3.6E-02	1.2E-03	2.3E-06	3.8E-02
Cs-135	3.6E-09	7.2E-06	5.5E-04	3.7E-06	4.3E-07	5.6E-04
Cs-137	3.5E-07	1.4E-03	9.2E-02	1.9E-04	4.7E-05	9.4E-02
Eu-152	8.0E-06	2.2E-03	1.3E-03	2.7E-03	5.0E-07	6.2E-03
Eu-154	1.7E-05	5.5E-03	3.8E-03	3.9E-03	9.6E-07	1.3E-02
Gd-153	8.3E-08	2.2E-05	4.7E-05	1.4E-06	1.0E-09	7.0E-05

Isotope	Exposure pathway dose - Adults ($\mu\text{Sv/y}$)					Total dose per isotope
	Plume immersion	Inhalation	Ing. Crops	Ext. irradiation	Inad. Ingestion	
H-3	2.3E-06	9.3E-01	2.0E+00	0.0E+00	0.0E+00	2.9E+00
Hg-203	3.0E-09	2.5E-07	6.7E-07	1.1E-08	4.0E-12	9.3E-07
Pb-210	0.0E+00	0.0E+00	0.0E+00	0.0E+00	0.0E+00	0.0E+00
Pb-211	0.0E+00	0.0E+00	2.1E-174	6.0E-05	1.8E-08	6.0E-05
Pb-212	0.0E+00	0.0E+00	2.0E-15	5.0E-06	3.4E-08	5.0E-06
Pb-214	0.0E+00	0.0E+00	0.0E+00	0.0E+00	0.0E+00	0.0E+00
Po-210	0.0E+00	0.0E+00	0.0E+00	0.0E+00	0.0E+00	0.0E+00
Po-212	0.0E+00	0.0E+00	0.0E+00	0.0E+00	0.0E+00	0.0E+00
Po-214	0.0E+00	0.0E+00	0.0E+00	0.0E+00	0.0E+00	0.0E+00
Po-215	0.0E+00	0.0E+00	0.0E+00	1.2E-07	0.0E+00	1.2E-07
Po-216	0.0E+00	0.0E+00	0.0E+00	5.7E-10	0.0E+00	5.7E-10
Po-218	0.0E+00	0.0E+00	0.0E+00	0.0E+00	0.0E+00	0.0E+00
Ra-223	0.0E+00	0.0E+00	1.6E-03	8.1E-05	9.9E-06	1.7E-03
Ra-224	1.3E-08	3.5E-02	2.0E-04	3.7E-07	3.7E-07	3.5E-02
Ra-228	8.1E-14	6.2E-05	1.4E-04	6.6E-12	2.3E-08	2.0E-04
Rn-219	0.0E+00	0.0E+00	0.0E+00	3.8E-05	0.0E+00	3.8E-05
Rn-220	4.1E-06	9.3E-03	0.0E+00	2.3E-08	0.0E+00	9.3E-03
Rn-222	2.7E-07	2.1E-04	0.0E+00	0.0E+00	0.0E+00	2.1E-04
Sr-90	1.3E-10	5.0E-02	4.1E-01	1.7E-04	8.7E-05	4.6E-01
Tb-160	1.5E-06	7.3E-05	2.3E-04	8.6E-06	1.9E-09	3.1E-04
Tb-161	2.8E-08	1.3E-05	1.2E-05	1.5E-08	8.0E-11	2.5E-05
Tc-99	4.4E-09	3.0E-06	1.6E-04	6.6E-08	8.1E-10	1.6E-04
Th-227	0.0E+00	0.0E+00	5.0E-06	7.5E-05	8.8E-07	8.1E-05
Th-228	1.1E-09	1.7E-01	6.7E-03	6.3E-08	4.0E-07	1.8E-01
Tl-207	0.0E+00	0.0E+00	0.0E+00	2.1E-05	7.1E-10	2.1E-05
Tl-208	0.0E+00	0.0E+00	0.0E+00	4.4E-05	1.7E-11	4.4E-05
Y-90	0.0E+00	0.0E+00	6.3E-06	1.5E-03	8.4E-06	1.5E-03
Total dose per pathway	3.7E-03	2.0E+00	2.7E+00	1.0E-02	2.7E-04	4.7E+00

C.3.2 Total acute atmospheric emission

Table C. 9. Total dose received per pathway and isotope during the last simulation year for infants.

Isotope	Exposure pathway dose - Infants (µSv/y)					Total dose per isotope
	Plume immersion	Inhalation	Ing. Crops	Ext. irradiation	Inad. Ingestion	
Ac-227	1.6E-10	3.8E-01	5.2E-02	1.3E-09	2.1E-04	4.3E-01
Ac-228	0.0E+00	0.0E+00	2.7E-27	3.7E-09	6.3E-11	3.8E-09
Bi-210	0.0E+00	0.0E+00	0.0E+00	0.0E+00	0.0E+00	0.0E+00
Bi-211	0.0E+00	0.0E+00	0.0E+00	6.1E-07	5.7E-09	6.2E-07
Bi-212	0.0E+00	0.0E+00	4.4E-107	1.0E-07	7.1E-09	1.1E-07
Bi-214	0.0E+00	0.0E+00	0.0E+00	0.0E+00	0.0E+00	0.0E+00
Br-82	3.6E-03	5.8E-03	6.0E-06	8.5E-06	4.4E-08	9.4E-03
Cs-134	2.1E-05	1.4E-04	2.7E-03	2.5E-05	1.3E-06	2.9E-03
Cs-135	3.4E-09	1.9E-06	5.5E-05	7.4E-08	3.5E-07	5.7E-05
Cs-137	3.3E-07	3.1E-04	7.5E-03	3.8E-06	3.0E-05	7.8E-03
Eu-152	8.0E-06	9.6E-04	6.2E-04	5.3E-05	1.8E-06	1.6E-03
Eu-154	1.7E-05	2.9E-03	2.0E-03	7.7E-05	4.0E-06	5.0E-03
Gd-153	1.0E-07	2.3E-05	2.7E-05	3.3E-08	4.9E-09	5.0E-05
H-3	2.3E-06	1.0E+00	4.6E-01	0.0E+00	0.0E+00	1.5E+00
Hg-203	3.1E-09	1.5E-07	3.9E-07	2.4E-10	2.0E-11	5.4E-07
Pb-210	0.0E+00	0.0E+00	0.0E+00	0.0E+00	0.0E+00	0.0E+00
Pb-211	0.0E+00	0.0E+00	1.4E-174	1.2E-06	9.6E-08	1.3E-06
Pb-212	0.0E+00	0.0E+00	1.9E-15	1.0E-07	2.5E-07	3.5E-07
Pb-214	0.0E+00	0.0E+00	0.0E+00	0.0E+00	0.0E+00	0.0E+00
Po-210	0.0E+00	0.0E+00	0.0E+00	0.0E+00	0.0E+00	0.0E+00
Po-212	0.0E+00	0.0E+00	0.0E+00	0.0E+00	0.0E+00	0.0E+00
Po-214	0.0E+00	0.0E+00	0.0E+00	0.0E+00	0.0E+00	0.0E+00
Po-215	0.0E+00	0.0E+00	0.0E+00	2.3E-09	0.0E+00	2.3E-09
Po-216	0.0E+00	0.0E+00	0.0E+00	1.1E-11	0.0E+00	1.1E-11
Po-218	0.0E+00	0.0E+00	0.0E+00	0.0E+00	0.0E+00	0.0E+00
Ra-223	0.0E+00	0.0E+00	1.6E-03	1.7E-06	7.6E-05	1.7E-03
Ra-224	1.4E-08	1.8E-02	1.8E-04	7.6E-09	2.6E-06	1.8E-02
Ra-228	1.9E-13	1.9E-05	1.0E-04	2.6E-13	1.3E-07	1.2E-04
Rn-219	0.0E+00	0.0E+00	0.0E+00	7.6E-07	0.0E+00	7.6E-07
Rn-220	4.2E-06	1.7E-03	0.0E+00	4.7E-10	0.0E+00	1.7E-03
Rn-222	5.2E-07	9.2E-05	0.0E+00	0.0E+00	0.0E+00	9.3E-05
Sr-90	1.2E-10	2.3E-02	9.4E-02	3.3E-06	1.6E-04	1.2E-01
Tb-160	1.5E-06	4.8E-05	1.2E-04	1.8E-07	8.4E-09	1.7E-04
Tb-161	3.5E-08	9.0E-06	7.5E-06	3.5E-10	4.3E-10	1.7E-05
Tc-99	4.2E-09	4.8E-06	1.1E-04	1.3E-09	4.3E-09	1.1E-04

Isotope	Exposure pathway dose - Infants (µSv/y)					Total dose per isotope
	Plume immersion	Inhalation	Ing. Crops	Ext. irradiation	Inad. Ingestion	
Th-227	0.0E+00	0.0E+00	3.5E-06	1.5E-06	4.8E-06	9.8E-06
Th-228	1.3E-09	1.1E-01	3.0E-03	1.3E-09	1.4E-06	1.1E-01
Tl-207	0.0E+00	0.0E+00	0.0E+00	4.2E-07	3.4E-09	4.2E-07
Tl-208	0.0E+00	0.0E+00	0.0E+00	8.4E-07	7.3E-11	8.4E-07
Y-90	0.0E+00	0.0E+00	4.2E-06	2.9E-05	4.3E-05	7.6E-05
Total dose per pathway	3.6E-03	1.6E+00	6.2E-01	2.1E-04	5.4E-04	2.2E+00

Table C. 10. Total dose received per pathway and isotope during the last simulation year for children.

Isotope	Exposure pathway dose - Children (µSv/y)					Total dose per isotope
	Plume immersion	Inhalation	Ing. Crops	Ext. irradiation	Inad. Ingestion	
Ac-227	1.3E-10	4.3E-01	5.0E-02	1.2E-09	5.2E-05	4.8E-01
Ac-228	0.0E+00	0.0E+00	1.7E-27	3.4E-09	9.8E-12	3.4E-09
Bi-210	0.0E+00	0.0E+00	0.0E+00	0.0E+00	0.0E+00	0.0E+00
Bi-211	0.0E+00	0.0E+00	0.0E+00	5.5E-07	7.9E-10	5.5E-07
Bi-212	0.0E+00	0.0E+00	2.5E-107	9.2E-08	9.8E-10	9.3E-08
Bi-214	0.0E+00	0.0E+00	0.0E+00	0.0E+00	0.0E+00	0.0E+00
Br-82	3.3E-03	5.5E-03	4.4E-06	7.7E-06	8.1E-09	8.8E-03
Cs-134	1.9E-05	2.6E-04	4.6E-03	2.2E-05	5.8E-07	4.9E-03
Cs-135	3.1E-09	3.0E-06	8.2E-05	6.7E-08	1.3E-07	8.5E-05
Cs-137	3.1E-07	5.5E-04	1.2E-02	3.4E-06	1.3E-05	1.3E-02
Eu-152	7.2E-06	1.2E-03	4.3E-04	4.8E-05	3.2E-07	1.7E-03
Eu-154	1.6E-05	3.2E-03	1.4E-03	7.0E-05	6.8E-07	4.7E-03
Gd-153	8.2E-08	1.9E-05	1.8E-05	2.8E-08	7.9E-10	3.7E-05
H-3	2.0E-06	8.1E-01	4.4E-01	0.0E+00	0.0E+00	1.3E+00
Hg-203	2.8E-09	1.7E-07	2.4E-07	2.2E-10	3.0E-12	4.1E-07
Pb-210	0.0E+00	0.0E+00	0.0E+00	0.0E+00	0.0E+00	0.0E+00
Pb-211	0.0E+00	0.0E+00	8.4E-175	1.1E-06	1.4E-08	1.1E-06
Pb-212	0.0E+00	0.0E+00	1.2E-15	9.3E-08	3.9E-08	1.3E-07
Pb-214	0.0E+00	0.0E+00	0.0E+00	0.0E+00	0.0E+00	0.0E+00
Po-210	0.0E+00	0.0E+00	0.0E+00	0.0E+00	0.0E+00	0.0E+00
Po-212	0.0E+00	0.0E+00	0.0E+00	0.0E+00	0.0E+00	0.0E+00
Po-214	0.0E+00	0.0E+00	0.0E+00	0.0E+00	0.0E+00	0.0E+00
Po-215	0.0E+00	0.0E+00	0.0E+00	2.1E-09	0.0E+00	2.1E-09
Po-216	0.0E+00	0.0E+00	0.0E+00	1.0E-11	0.0E+00	1.0E-11

Isotope	Exposure pathway dose - Children (µSv/y)					Total dose per isotope
	Plume immersion	Inhalation	Ing. Crops	Ext. irradiation	Inad. Ingestion	
Po-218	0.0E+00	0.0E+00	0.0E+00	0.0E+00	0.0E+00	0.0E+00
Ra-223	0.0E+00	0.0E+00	1.3E-03	1.5E-06	1.6E-05	1.3E-03
Ra-224	1.2E-08	2.2E-02	1.4E-04	6.8E-09	5.1E-07	2.2E-02
Ra-228	1.4E-13	2.3E-05	1.4E-04	2.0E-13	4.4E-08	1.6E-04
Rn-219	0.0E+00	0.0E+00	0.0E+00	6.8E-07	0.0E+00	6.8E-07
Rn-220	3.8E-06	4.5E-03	0.0E+00	4.2E-10	0.0E+00	4.5E-03
Rn-222	4.7E-07	2.4E-04	0.0E+00	0.0E+00	0.0E+00	2.4E-04
Sr-90	1.1E-10	2.7E-02	1.6E-01	3.0E-06	6.5E-05	1.9E-01
Tb-160	1.4E-06	5.0E-05	8.2E-05	1.6E-07	1.4E-09	1.3E-04
Tb-161	2.9E-08	9.4E-06	4.5E-06	3.5E-10	6.4E-11	1.4E-05
Tc-99	3.8E-09	2.9E-06	5.8E-05	1.2E-09	5.8E-10	6.1E-05
Th-227	0.0E+00	0.0E+00	2.3E-06	1.4E-06	7.9E-07	4.5E-06
Th-228	1.1E-09	1.1E-01	2.3E-03	1.2E-09	2.7E-07	1.1E-01
Tl-207	0.0E+00	0.0E+00	0.0E+00	3.8E-07	4.5E-10	3.8E-07
Tl-208	0.0E+00	0.0E+00	0.0E+00	7.7E-07	1.1E-11	7.7E-07
Y-90	0.0E+00	0.0E+00	2.5E-06	2.6E-05	6.4E-06	3.5E-05
Total dose per pathway	3.3E-03	1.4E+00	6.7E-01	1.9E-04	1.5E-04	2.1E+00

Table C. 11. Total dose received per pathway and isotope during the last simulation year for adult.

Isotope	Exposure pathway dose - Adult (µSv/y)					Total dose per isotope
	Plume immersion	Inhalation	Ing. Crops	Ext. irradiation	Inad. Ingestion	
Ac-227	9.3E-11	4.8E-01	5.7E-02	1.7E-08	3.0E-05	5.4E-01
Ac-228	0.0E+00	0.0E+00	1.3E-27	5.2E-08	3.9E-12	5.2E-08
Bi-210	0.0E+00	0.0E+00	0.0E+00	0.0E+00	0.0E+00	0.0E+00
Bi-211	0.0E+00	0.0E+00	0.0E+00	8.4E-06	3.3E-10	8.4E-06
Bi-212	0.0E+00	0.0E+00	2.0E-107	1.4E-06	4.1E-10	1.4E-06
Bi-214	0.0E+00	0.0E+00	0.0E+00	0.0E+00	0.0E+00	0.0E+00
Br-82	2.7E-03	4.2E-03	3.9E-06	1.2E-04	3.7E-09	7.0E-03
Cs-134	1.5E-05	4.4E-04	9.8E-03	3.4E-04	6.3E-07	1.1E-02
Cs-135	2.6E-09	4.6E-06	1.5E-04	1.0E-06	1.2E-07	1.6E-04
Cs-137	2.6E-07	9.2E-04	2.5E-02	5.3E-05	1.3E-05	2.6E-02
Eu-152	5.9E-06	1.4E-03	3.6E-04	7.4E-04	1.4E-07	2.5E-03
Eu-154	1.3E-05	3.5E-03	1.0E-03	1.1E-03	2.6E-07	5.6E-03
Gd-153	6.1E-08	1.4E-05	1.3E-05	4.1E-07	2.9E-10	2.7E-05

Isotope	Exposure pathway dose - Adult (µSv/y)					Total dose per isotope
	Plume immersion	Inhalation	Ing. Crops	Ext. irradiation	Inad. Ingestion	
H-3	1.7E-06	6.0E-01	5.3E-01	0.0E+00	0.0E+00	1.1E+00
Hg-203	2.2E-09	1.6E-07	1.8E-07	3.3E-09	1.2E-12	3.5E-07
Pb-210	0.0E+00	0.0E+00	0.0E+00	0.0E+00	0.0E+00	0.0E+00
Pb-211	0.0E+00	0.0E+00	5.7E-175	1.7E-05	5.0E-09	1.7E-05
Pb-212	0.0E+00	0.0E+00	5.5E-16	1.4E-06	9.4E-09	1.4E-06
Pb-214	0.0E+00	0.0E+00	0.0E+00	0.0E+00	0.0E+00	0.0E+00
Po-210	0.0E+00	0.0E+00	0.0E+00	0.0E+00	0.0E+00	0.0E+00
Po-212	0.0E+00	0.0E+00	0.0E+00	0.0E+00	0.0E+00	0.0E+00
Po-214	0.0E+00	0.0E+00	0.0E+00	0.0E+00	0.0E+00	0.0E+00
Po-215	0.0E+00	0.0E+00	0.0E+00	3.2E-08	0.0E+00	3.2E-08
Po-216	0.0E+00	0.0E+00	0.0E+00	1.6E-10	0.0E+00	1.6E-10
Po-218	0.0E+00	0.0E+00	0.0E+00	0.0E+00	0.0E+00	0.0E+00
Ra-223	0.0E+00	0.0E+00	4.5E-04	2.3E-05	2.8E-06	4.8E-04
Ra-224	9.6E-09	2.3E-02	5.5E-05	1.0E-07	1.0E-07	2.3E-02
Ra-228	6.0E-14	4.0E-05	3.8E-05	1.8E-12	6.2E-09	7.8E-05
Rn-219	0.0E+00	0.0E+00	0.0E+00	1.0E-05	0.0E+00	1.0E-05
Rn-220	3.0E-06	6.0E-03	0.0E+00	6.5E-09	0.0E+00	6.0E-03
Rn-222	3.8E-07	3.2E-04	0.0E+00	0.0E+00	0.0E+00	3.2E-04
Sr-90	9.4E-11	3.2E-02	1.1E-01	4.7E-05	2.4E-05	1.4E-01
Tb-160	1.1E-06	4.7E-05	6.2E-05	2.5E-06	5.4E-10	1.1E-04
Tb-161	2.1E-08	8.7E-06	3.2E-06	4.2E-09	2.3E-11	1.2E-05
Tc-99	3.2E-09	1.9E-06	4.4E-05	1.9E-08	2.3E-10	4.6E-05
Th-227	0.0E+00	0.0E+00	1.4E-06	2.1E-05	2.4E-07	2.3E-05
Th-228	8.2E-10	1.1E-01	1.8E-03	1.8E-08	1.1E-07	1.1E-01
Tl-207	0.0E+00	0.0E+00	0.0E+00	5.9E-06	2.0E-10	5.9E-06
Tl-208	0.0E+00	0.0E+00	0.0E+00	1.2E-05	4.9E-12	1.2E-05
Y-90	0.0E+00	0.0E+00	1.8E-06	4.1E-04	2.3E-06	4.1E-04
Total dose per pathway	2.7E-03	1.3E+00	7.4E-01	2.9E-03	7.4E-05	2.0E+00

C.3.3 Liquid discharges

Table C. 12. Total dose received per pathway and isotope during the last simulation year for infants.

Isotope	Exposure pathway dose - Infants (μSv/y)					Total dose per isotope
	Fish ingestion	Boating	Ing. Crops	Inad. Ingestion	External irradiation	
Ac-228	2.1E-08	3.1E-17	6.6E-26	1.1E-09	6.3E-08	8.5E-08
Ag-108	1.0E-10	4.6E-19	0.0E+00	2.5E-11	8.4E-09	8.5E-09
Ag-108m	3.5E-08	3.2E-17	1.7E-07	8.5E-09	2.4E-07	4.5E-07
Ag-110	8.7E-09	1.7E-19	0.0E+00	4.2E-11	7.1E-11	8.8E-09
Ag-110m	8.7E-09	1.1E-17	1.6E-08	4.2E-11	1.5E-09	2.6E-08
Bi-211	8.0E-10	3.1E-17	0.0E+00	2.0E-12	2.1E-10	1.0E-09
Bi-212	5.4E-11	2.3E-19	4.2E-108	6.7E-10	9.6E-09	1.0E-08
Cd-109	6.5E-07	7.2E-19	1.3E-06	1.6E-09	1.2E-10	2.0E-06
Co-60	1.7E-05	2.9E-15	2.5E-05	1.6E-07	2.8E-06	4.5E-05
Cs-134	6.8E-06	1.6E-16	6.4E-07	3.6E-09	6.6E-08	7.5E-06
Cs-137	3.1E-05	5.5E-19	1.0E-05	1.6E-07	2.0E-08	4.1E-05
H-3	1.4E-06	4.8E-21	2.9E-04	0.0E+00	1.1E-09	2.9E-04
I-125	1.0E-05	2.1E-18	2.4E-06	2.0E-09	3.4E-11	1.2E-05
I-131	2.7E-04	6.0E-16	1.0E-05	7.0E-09	2.9E-09	2.8E-04
Lu-177	1.4E-07	5.0E-17	1.5E-07	1.2E-10	2.2E-10	2.9E-07
Lu-177m	9.9E-12	3.7E-20	1.1E-10	2.1E-13	3.5E-12	1.2E-10
Pb-211	5.0E-07	4.6E-17	8.2E-178	3.3E-11	4.1E-10	5.0E-07
Pb-212	1.4E-07	2.9E-19	3.4E-16	4.5E-08	9.8E-09	1.9E-07
Po-212	0.0E+00	0.0E+00	0.0E+00	0.0E+00	0.0E+00	0.0E+00
Po-215	0.0E+00	1.2E-19	0.0E+00	0.0E+00	8.0E-13	8.0E-13
Po-216	0.0E+00	4.1E-23	0.0E+00	0.0E+00	1.1E-12	1.1E-12
Pu-238	8.7E-08	1.1E-22	1.1E-07	1.0E-08	2.6E-13	2.1E-07
Pu-239	6.8E-06	6.7E-21	8.8E-06	1.0E-06	3.4E-11	1.7E-05
Pu-240	6.8E-07	8.1E-22	8.8E-07	1.0E-07	2.4E-12	1.7E-06
Pu-242	4.3E-08	7.7E-23	5.6E-08	6.3E-09	3.5E-13	1.1E-07
Ra-223	2.3E-04	8.7E-17	4.7E-05	2.6E-08	5.7E-10	2.8E-04
Ra-224	5.2E-07	2.6E-20	8.6E-07	2.4E-07	7.2E-10	1.6E-06
Ra-228	6.8E-05	6.2E-21	1.7E-04	2.2E-06	4.4E-12	2.4E-04
Rh-106	7.7E-09	1.2E-16	0.0E+00	4.3E-11	2.8E-09	1.1E-08
Rn-219	0.0E+00	3.8E-17	0.0E+00	0.0E+00	2.6E-10	2.6E-10
Rn-220	0.0E+00	1.6E-21	0.0E+00	0.0E+00	4.5E-11	4.5E-11
Ru-106	3.9E-07	5.4E-25	6.9E-07	2.2E-09	2.3E-13	1.1E-06
Sc-46	4.1E-10	8.2E-20	7.3E-11	7.8E-14	3.7E-12	4.9E-10
Sn-113	1.0E-08	2.2E-19	7.2E-09	6.8E-12	1.8E-12	1.7E-08
Th-228	9.9E-09	1.9E-22	1.8E-07	1.4E-07	1.3E-10	3.3E-07

Isotope	Exposure pathway dose - Infants (μSv/y)					Total dose per isotope
	Fish ingestion	Boating	Ing. Crops	Inad. Ingestion	External irradiation	
Th-232	4.9E-07	8.7E-22	6.3E-07	7.3E-08	5.0E-12	1.2E-06
Tl-207	2.7E-08	4.1E-18	0.0E+00	1.2E-12	1.4E-10	2.7E-08
Tl-208	3.3E-11	2.8E-18	0.0E+00	6.9E-12	7.9E-08	7.9E-08
Total dose per pathway	6.4E-04	4.1E-15	5.7E-04	4.2E-06	3.3E-06	1.2E-03

Table C. 13. Total dose received per pathway and isotope during the last simulation year for children.

Isotope	Exposure pathway dose - Children (μSv/y)					Total dose per isotope
	Fish ingestion	Boating	Ing. Crops	Inad. Ingestion	External irradiation	
Ac-228	1.3E-08	2.8E-17	4.1E-26	1.7E-10	5.7E-08	7.0E-08
Ag-108	5.4E-11	4.2E-19	0.0E+00	3.3E-12	7.6E-09	7.7E-09
Ag-108m	2.7E-08	2.9E-17	1.3E-07	1.7E-09	2.1E-07	3.7E-07
Ag-110	6.5E-09	1.6E-19	0.0E+00	7.8E-12	6.5E-11	6.6E-09
Ag-110m	6.5E-09	1.0E-17	1.2E-08	7.8E-12	1.4E-09	2.0E-08
Bi-211	4.4E-10	2.7E-17	0.0E+00	2.7E-13	1.9E-10	6.3E-10
Bi-212	3.0E-11	2.1E-19	2.3E-108	9.3E-11	8.7E-09	8.8E-09
Cd-109	4.8E-07	5.7E-19	9.4E-07	2.9E-10	1.0E-10	1.4E-06
Co-60	1.4E-05	2.6E-15	2.0E-05	3.3E-08	2.6E-06	3.7E-05
Cs-134	1.2E-05	1.4E-16	1.1E-06	1.6E-09	6.0E-08	1.3E-05
Cs-137	5.1E-05	5.4E-19	1.7E-05	6.8E-08	1.8E-08	6.8E-05
H-3	1.3E-06	3.5E-21	2.8E-04	0.0E+00	9.8E-10	2.8E-04
I-125	1.1E-05	1.6E-18	2.6E-06	5.4E-10	2.4E-11	1.4E-05
I-131	1.6E-04	5.3E-16	5.8E-06	1.0E-09	2.6E-09	1.7E-04
Lu-177	8.5E-08	4.2E-17	9.1E-08	1.9E-11	2.0E-10	1.8E-07
Lu-177m	6.5E-12	3.2E-20	7.5E-11	3.4E-14	3.1E-12	8.5E-11
Pb-211	2.9E-07	4.1E-17	4.8E-178	4.9E-12	3.7E-10	2.9E-07
Pb-212	8.0E-08	2.5E-19	2.0E-16	6.5E-09	8.8E-09	9.5E-08
Po-212	0.0E+00	0.0E+00	0.0E+00	0.0E+00	0.0E+00	0.0E+00
Po-215	0.0E+00	1.0E-19	0.0E+00	0.0E+00	7.1E-13	7.1E-13
Po-216	0.0E+00	3.7E-23	0.0E+00	0.0E+00	9.7E-13	9.7E-13
Pu-238	1.0E-07	9.4E-23	1.3E-07	3.1E-09	2.0E-13	2.3E-07
Pu-239	8.8E-06	5.5E-21	1.1E-05	3.2E-07	2.9E-11	2.0E-05
Pu-240	8.8E-07	6.7E-22	1.1E-06	3.2E-08	1.9E-12	2.0E-06
Pu-242	5.6E-08	6.7E-23	7.3E-08	2.1E-09	3.1E-13	1.3E-07
Ra-223	1.8E-04	7.3E-17	3.8E-05	5.3E-09	5.1E-10	2.2E-04

Isotope	Exposure pathway dose - Children (µSv/y)					Total dose per isotope
	Fish ingestion	Boating	Ing. Crops	Inad. Ingestion	External irradiation	
Ra-224	4.1E-07	2.2E-20	6.8E-07	4.8E-08	6.4E-10	1.1E-06
Ra-228	9.3E-05	5.3E-21	2.4E-04	7.4E-07	3.5E-12	3.3E-04
Rh-106	5.2E-09	1.0E-16	0.0E+00	7.4E-12	2.5E-09	7.7E-09
Rn-219	0.0E+00	3.4E-17	0.0E+00	0.0E+00	2.3E-10	2.3E-10
Rn-220	0.0E+00	1.5E-21	0.0E+00	0.0E+00	4.0E-11	4.0E-11
Ru-106	2.4E-07	4.4E-25	4.2E-07	3.3E-10	2.1E-13	6.6E-07
Sc-46	3.0E-10	7.4E-20	5.3E-11	1.4E-14	3.4E-12	3.6E-10
Sn-113	6.6E-09	1.8E-19	4.6E-09	1.1E-12	1.5E-12	1.1E-08
Th-228	7.5E-09	1.5E-22	1.3E-07	2.6E-08	1.1E-10	1.6E-07
Th-232	6.3E-07	7.1E-22	8.1E-07	2.3E-08	4.2E-12	1.5E-06
Tl-207	1.5E-08	3.9E-18	0.0E+00	1.5E-13	1.3E-10	1.5E-08
Tl-208	1.9E-11	2.5E-18	0.0E+00	1.0E-12	7.3E-08	7.3E-08
Total dose per pathway	5.3E-04	3.7E-15	6.2E-04	1.3E-06	3.0E-06	1.2E-03

Table C. 14. Total dose received per pathway and isotope during the last simulation year for adults.

Isotope	Exposure pathway dose -Adults (µSv/y)						Total dose per isotope
	Fish ingestion	Boating	Swimming	Ing. Crops	Inad. Ingestion	External irradiation	
Ac-228	9.8E-09	2.5E-17	1.2E-17	3.1E-26	6.6E-11	8.8E-07	8.9E-07
Ag-108	4.3E-11	3.8E-19	1.7E-19	0.0E+00	1.4E-12	1.2E-07	1.2E-07
Ag-108m	2.2E-08	2.5E-17	1.2E-17	1.1E-07	7.1E-10	3.3E-06	3.4E-06
Ag-110	5.2E-09	1.4E-19	6.5E-20	0.0E+00	3.3E-12	1.0E-09	6.2E-09
Ag-110m	5.2E-09	9.1E-18	4.1E-18	9.9E-09	3.3E-12	2.2E-08	3.7E-08
Bi-211	3.5E-10	2.3E-17	1.1E-17	0.0E+00	1.1E-13	2.9E-09	3.3E-09
Bi-212	2.3E-11	1.9E-19	8.7E-20	1.9E-108	3.9E-11	1.3E-07	1.3E-07
Cd-109	4.1E-07	4.2E-19	1.9E-19	8.4E-07	1.3E-10	1.4E-09	1.3E-06
Co-60	6.3E-06	2.3E-15	1.1E-15	9.7E-06	8.3E-09	4.0E-05	5.6E-05
Cs-134	2.4E-05	1.2E-16	5.7E-17	2.4E-06	1.7E-09	9.2E-07	2.7E-05
Cs-137	1.0E-04	5.3E-19	2.4E-19	3.4E-05	7.0E-08	2.9E-07	1.3E-04
H-3	1.5E-06	1.1E-21	4.8E-22	3.4E-04	0.0E+00	1.5E-08	3.4E-04
I-125	8.1E-06	1.1E-18	5.2E-19	2.0E-06	2.1E-10	2.8E-10	1.0E-05
I-131	9.9E-05	4.6E-16	2.1E-16	3.8E-06	3.4E-10	4.0E-08	1.0E-04
Lu-177	5.6E-08	3.7E-17	1.7E-17	6.3E-08	6.7E-12	3.0E-09	1.2E-07
Lu-177m	4.6E-12	2.8E-20	1.3E-20	5.5E-11	1.3E-14	4.7E-11	1.1E-10

Isotope	Exposure pathway dose -Adults (µSv/y)						Total dose per isotope
	Fish ingestion	Boating	Swimming	Ing. Crops	Inad. Ingestion	External irradiation	
Pb-211	1.9E-07	3.7E-17	1.7E-17	3.3E-178	1.7E-12	5.7E-09	2.0E-07
Pb-212	6.1E-08	2.1E-19	9.7E-20	1.6E-16	2.7E-09	1.3E-07	1.9E-07
Po-212	0.0E+00	0.0E+00	0.0E+00	0.0E+00	0.0E+00	0.0E+00	0.0E+00
Po-215	0.0E+00	9.1E-20	4.2E-20	0.0E+00	0.0E+00	1.1E-11	1.1E-11
Po-216	0.0E+00	3.3E-23	1.5E-23	0.0E+00	0.0E+00	1.5E-11	1.5E-11
Pu-238	1.5E-07	4.5E-23	2.1E-23	1.9E-07	2.4E-09	1.9E-12	3.4E-07
Pu-239	1.2E-05	3.7E-21	1.7E-21	1.6E-05	2.4E-07	3.9E-10	2.8E-05
Pu-240	1.2E-06	3.3E-22	1.5E-22	1.6E-06	2.4E-08	1.8E-11	2.8E-06
Pu-242	7.8E-08	4.5E-23	2.1E-23	1.0E-07	1.5E-09	4.2E-12	1.8E-07
Ra-223	6.2E-05	6.4E-17	2.9E-17	1.3E-05	9.5E-10	7.7E-09	7.5E-05
Ra-224	1.5E-07	1.9E-20	8.9E-21	2.6E-07	9.6E-09	9.8E-09	4.3E-07
Ra-228	2.5E-05	2.1E-21	9.6E-22	6.6E-05	1.1E-07	3.1E-11	9.1E-05
Rh-106	3.8E-09	9.3E-17	4.3E-17	0.0E+00	2.9E-12	3.9E-08	4.3E-08
Rn-219	0.0E+00	2.9E-17	1.3E-17	0.0E+00	0.0E+00	3.6E-09	3.6E-09
Rn-220	0.0E+00	1.3E-21	5.9E-22	0.0E+00	0.0E+00	6.2E-10	6.2E-10
Ru-106	1.7E-07	1.9E-25	8.8E-26	3.0E-07	1.2E-10	3.2E-12	4.7E-07
Sc-46	2.3E-10	6.6E-20	3.0E-20	4.3E-11	5.9E-15	5.2E-11	3.3E-10
Sn-113	4.5E-09	1.4E-19	6.5E-20	3.3E-09	4.0E-13	2.2E-11	7.8E-09
Th-228	5.8E-09	1.3E-22	5.9E-23	1.1E-07	1.1E-08	1.7E-09	1.3E-07
Th-232	7.5E-07	5.0E-22	2.3E-22	1.0E-06	1.5E-08	5.8E-11	1.8E-06
Tl-207	1.2E-08	3.6E-18	1.7E-18	0.0E+00	6.7E-14	2.0E-09	1.4E-08
Tl-208	1.6E-11	2.3E-18	1.1E-18	0.0E+00	4.6E-13	1.1E-06	1.1E-06
Total dose per pathway	3.4E-04	3.3E-15	1.5E-15	4.9E-04	4.9E-07	4.7E-05	8.8E-04